

2.5 Figures

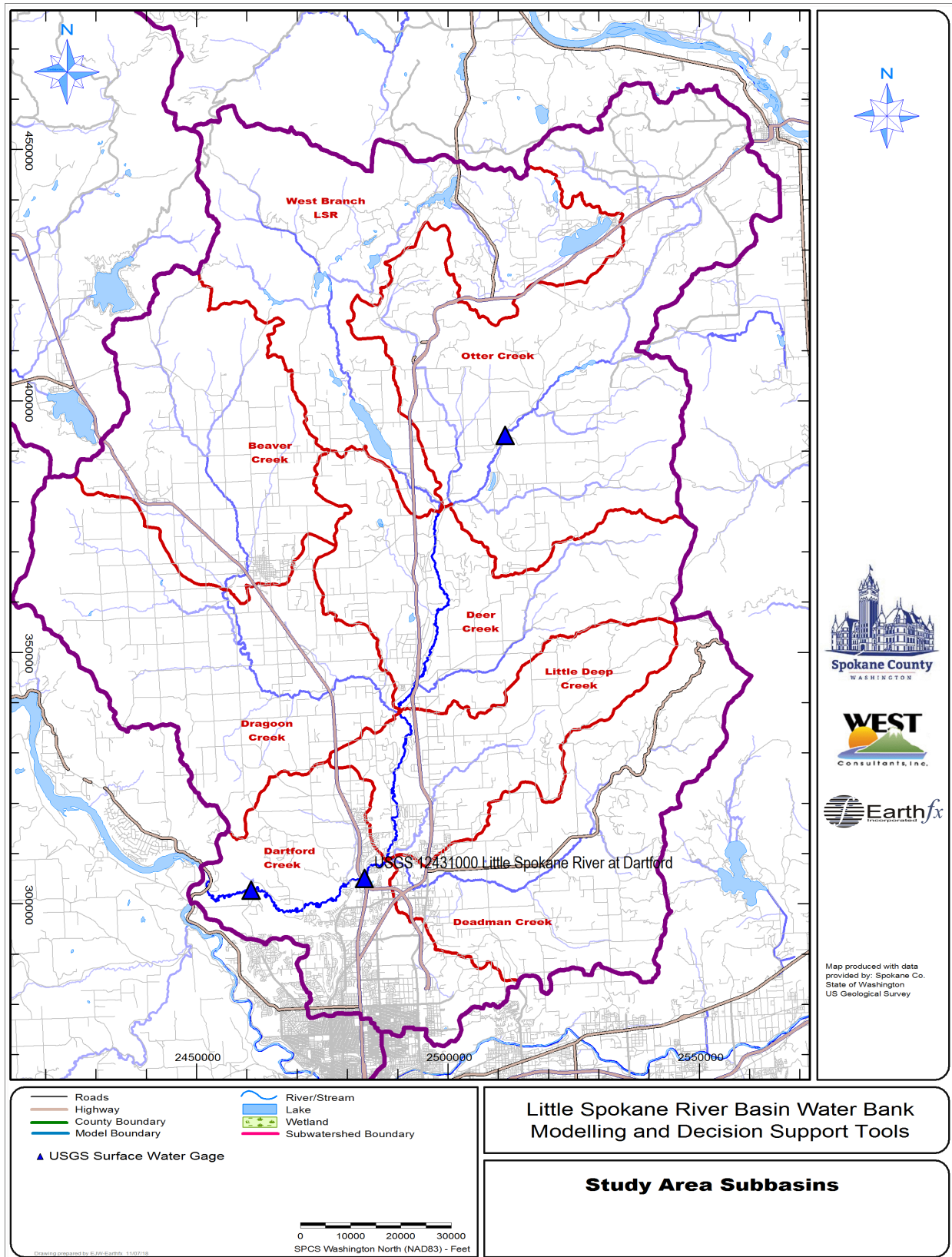


Figure 2.1: Streams and subwatersheds delineated in the study area.

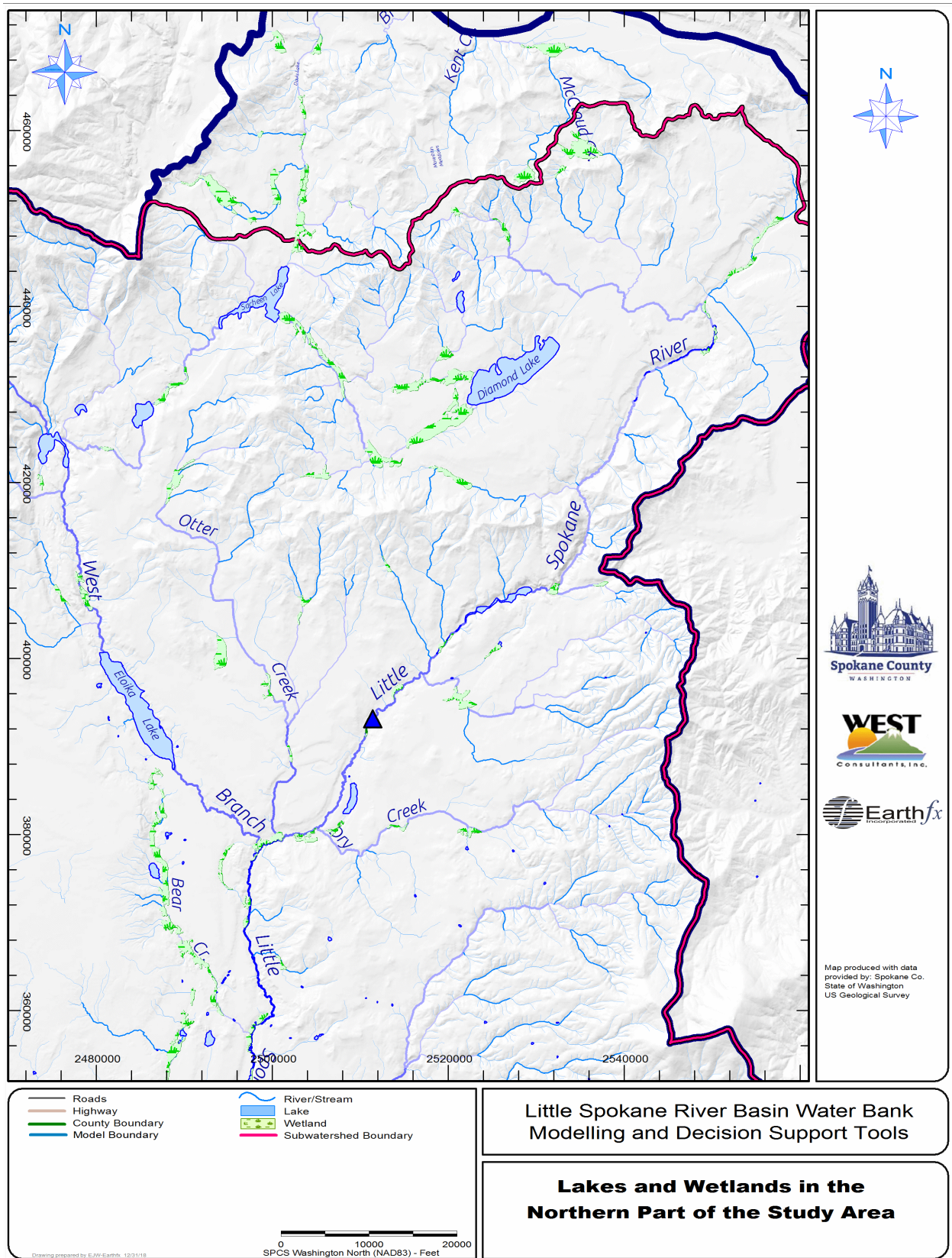


Figure 2.2: Lakes and wetlands in the northern part of the study area.

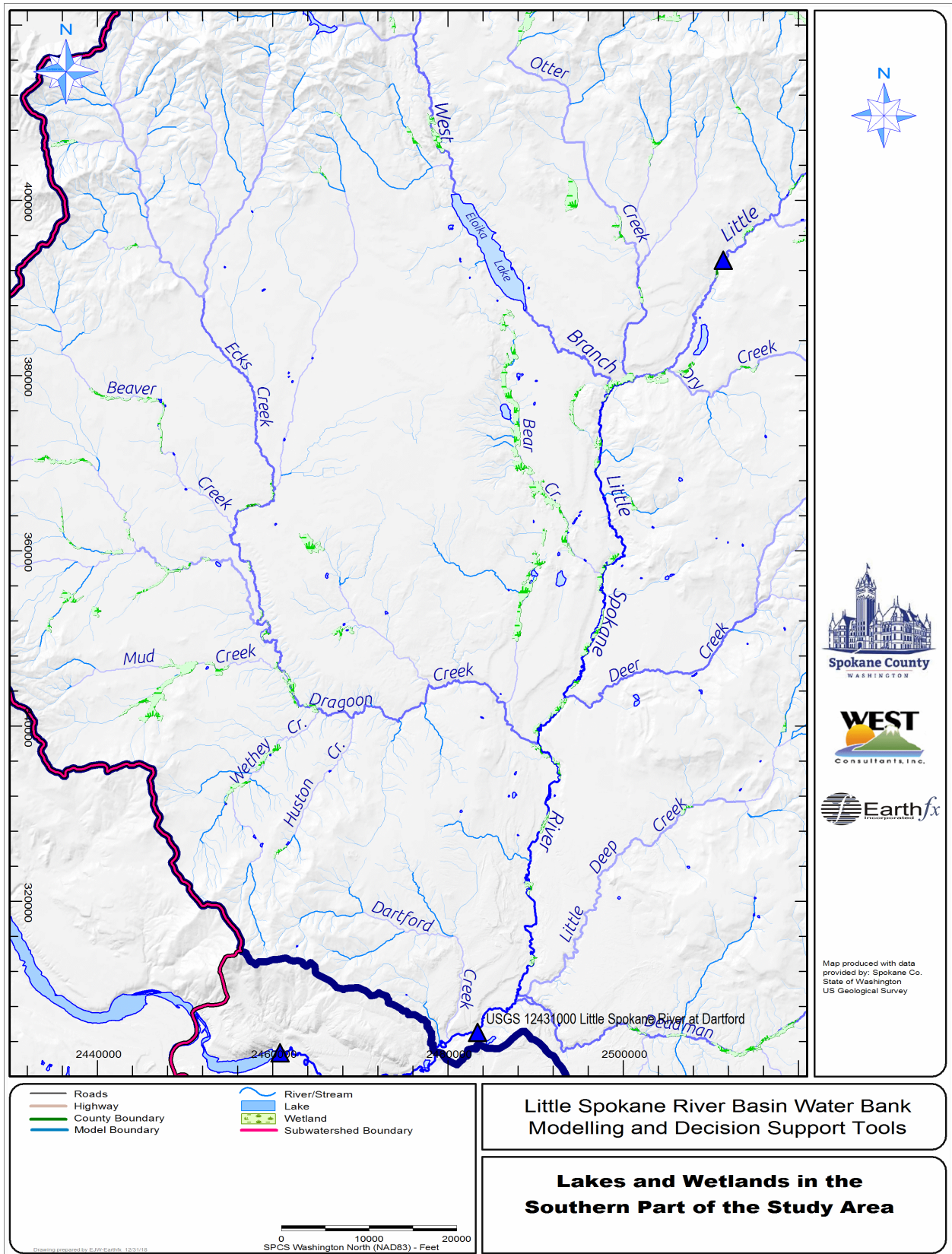


Figure 2.3: Lakes and wetlands in the southern part of the study area.

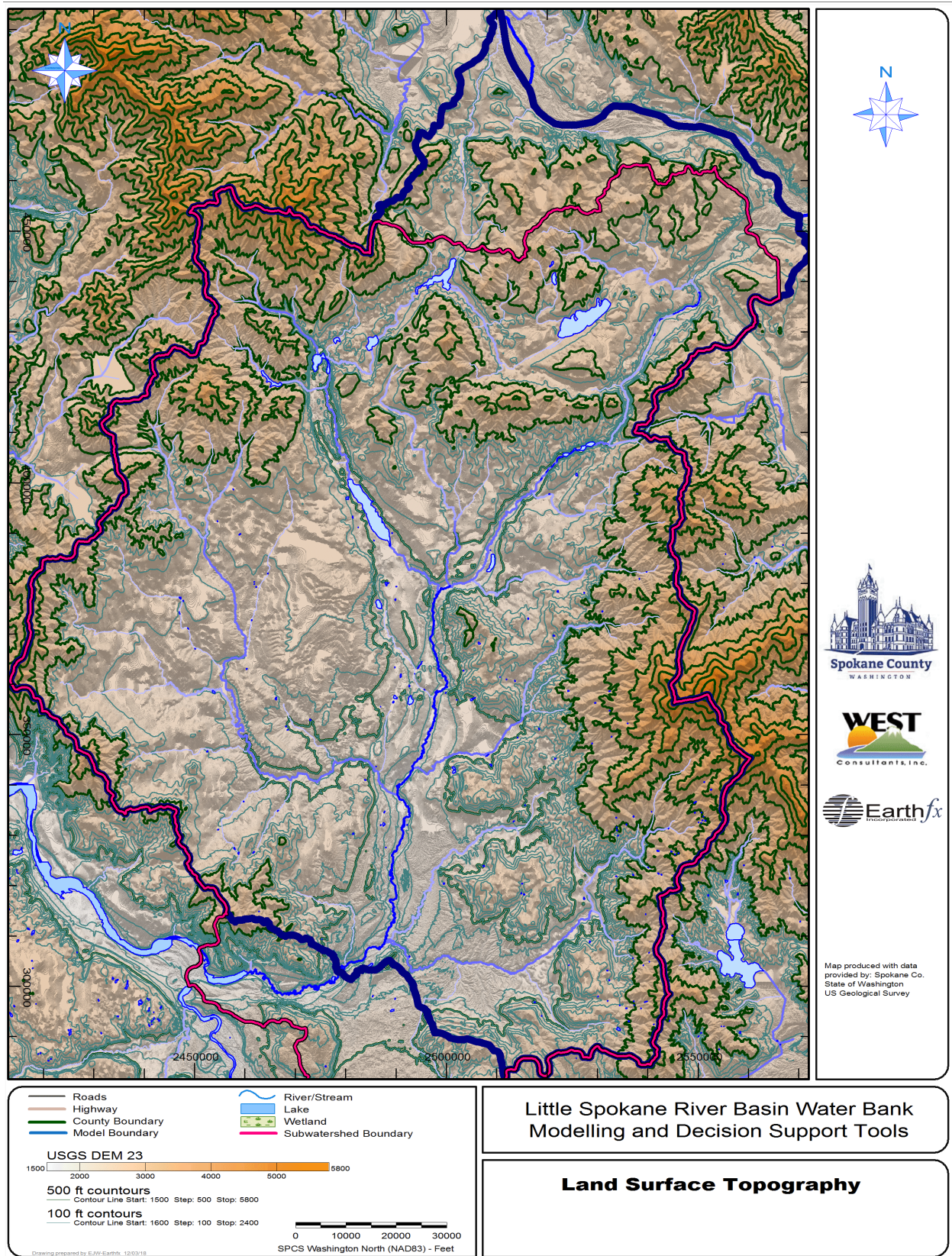


Figure 2.4: Land surface topography in the study area.

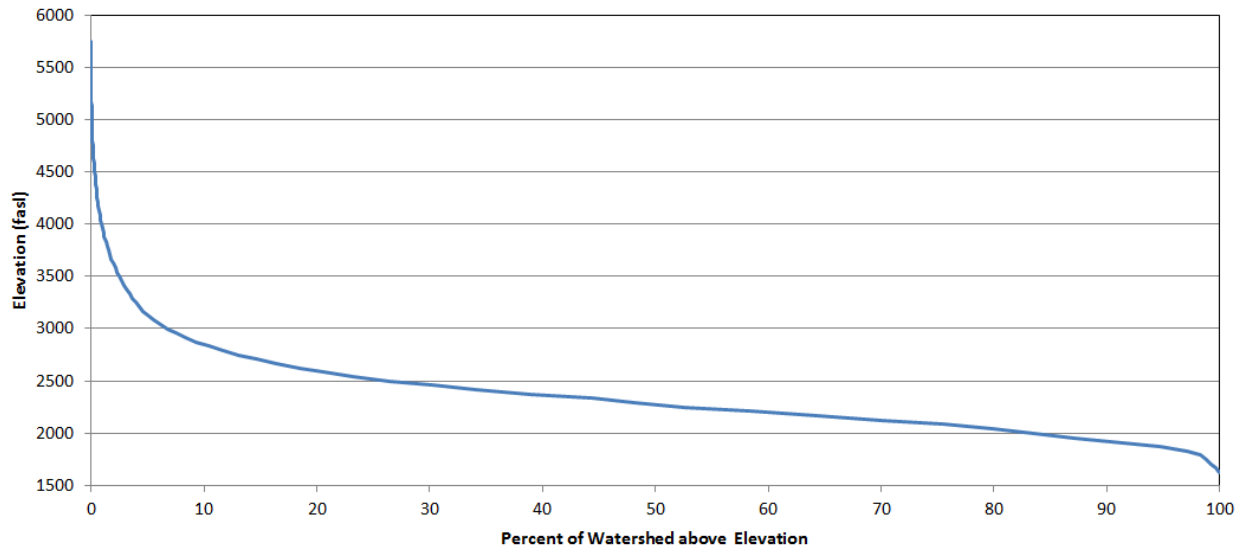


Figure 2.5: Hypsometric profile of the Little Spokane River watershed.

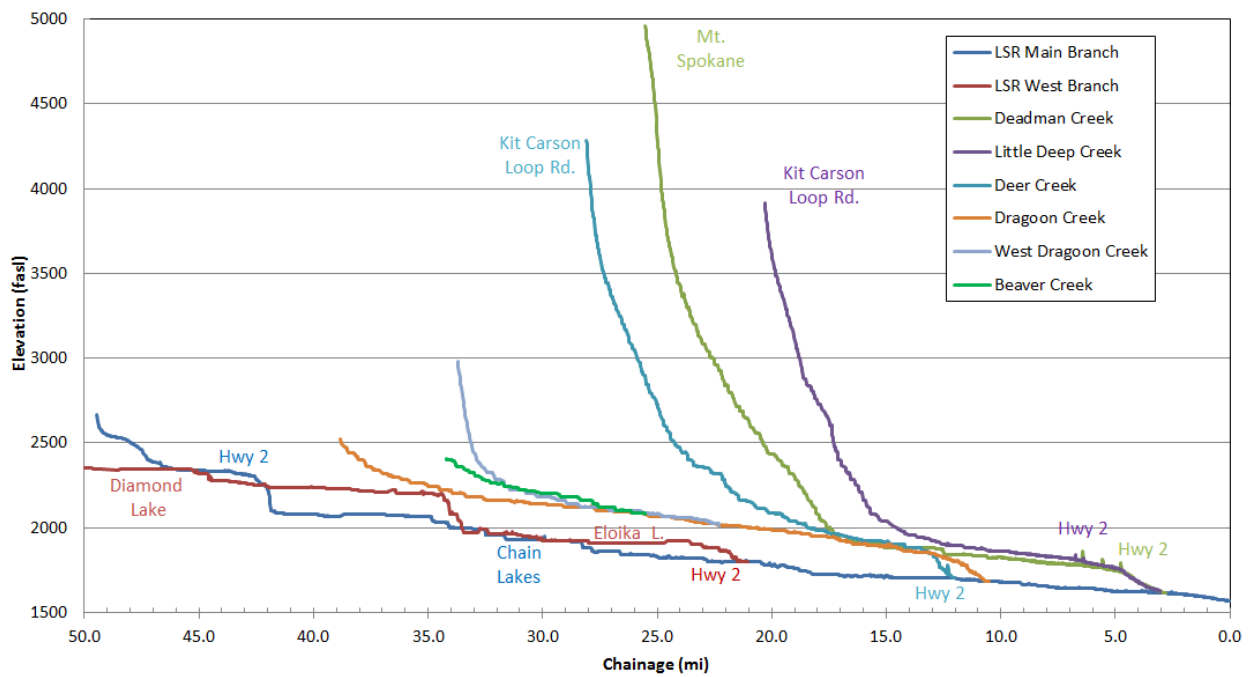


Figure 2.6: Elevation profile of the Little Spokane River and principal tributaries.

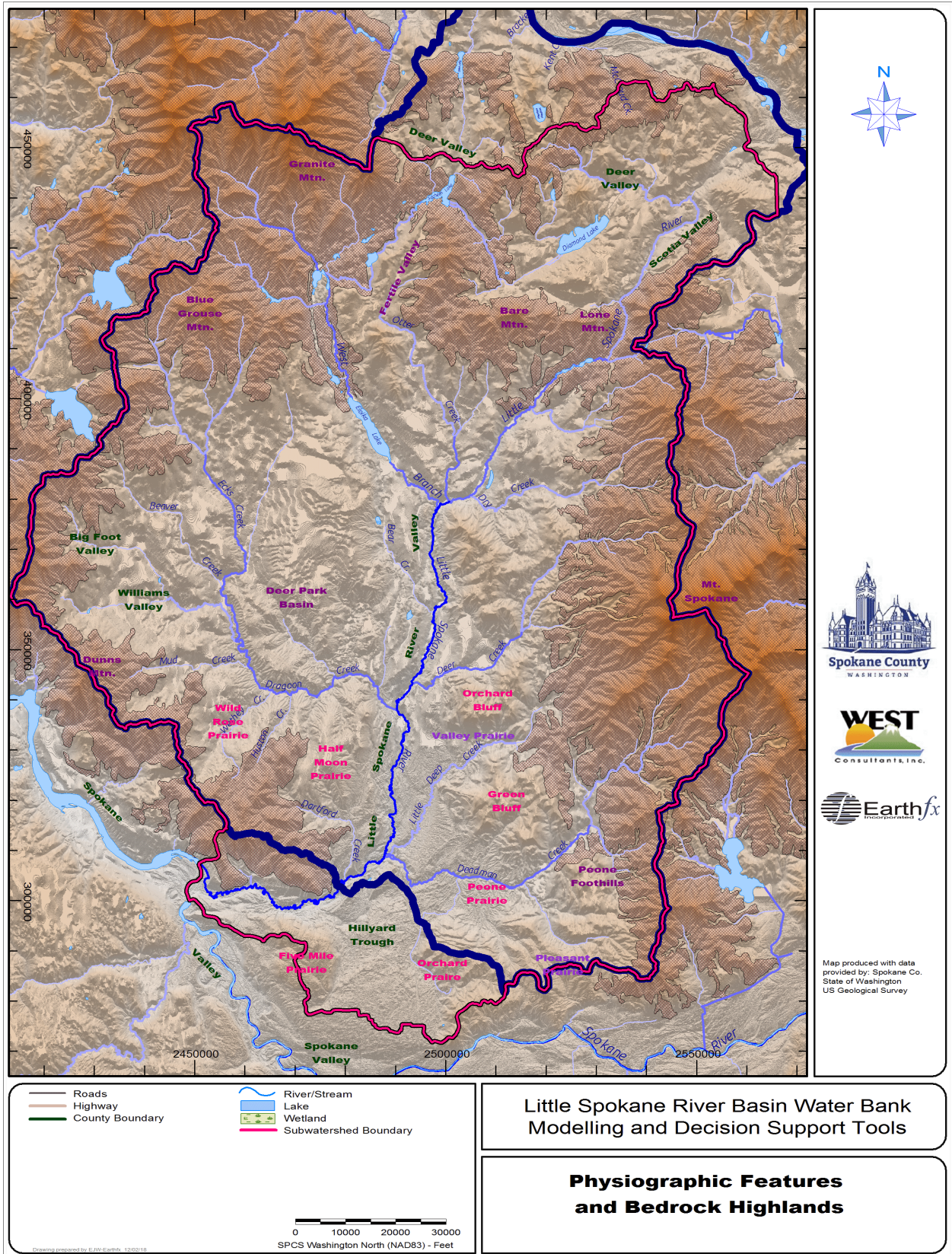


Figure 2.7: Key physiographic features of the study area and the bedrock highlands.

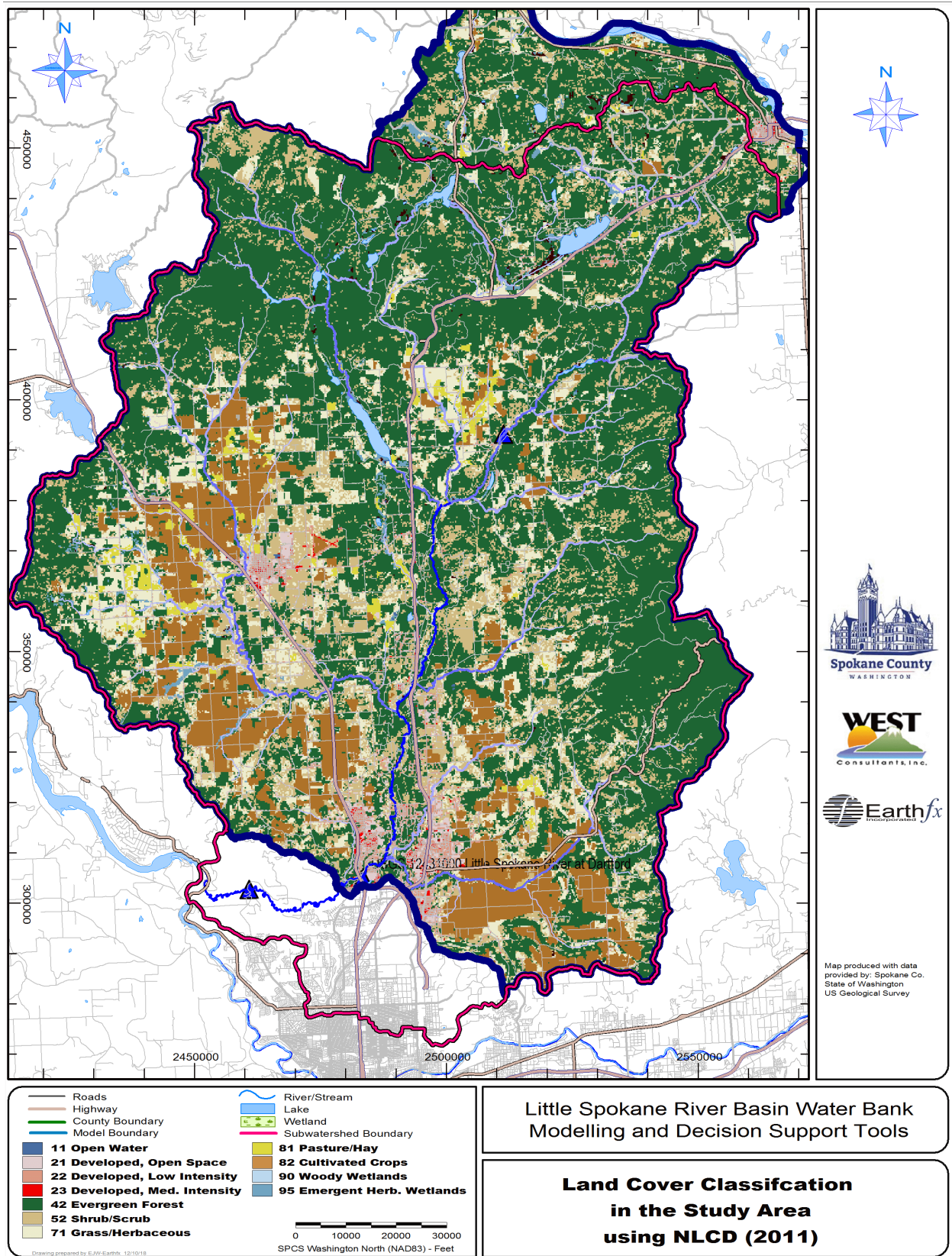
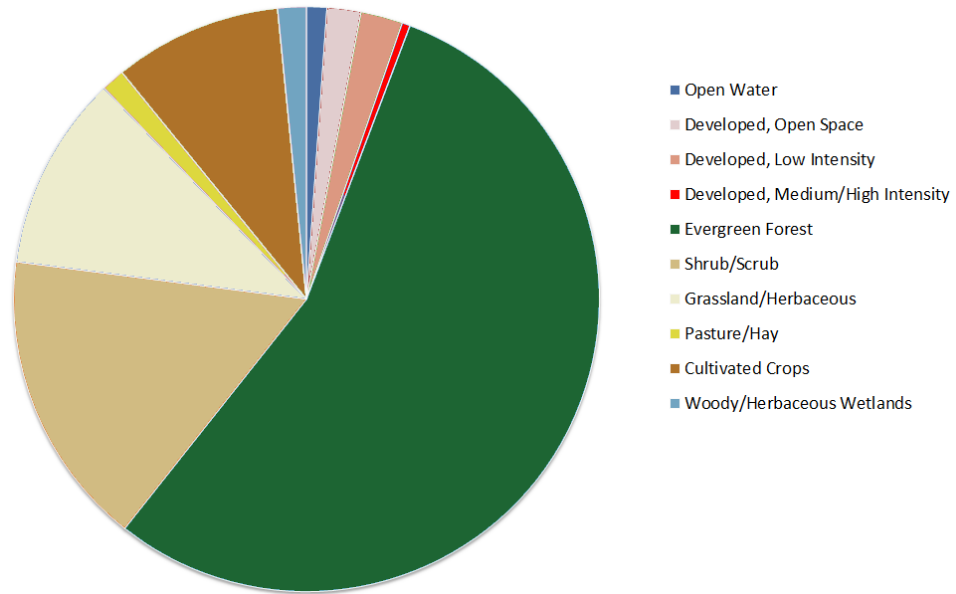
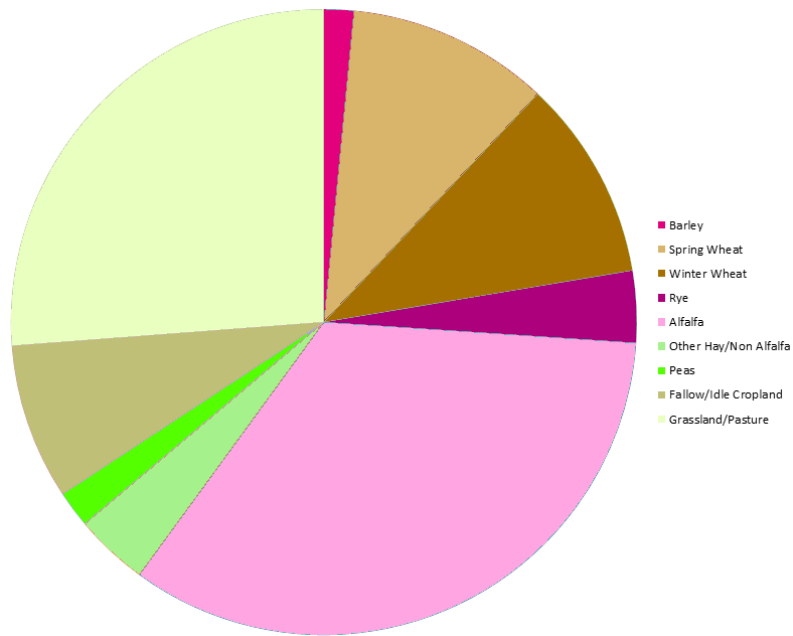


Figure 2.8: Land cover classification for the study area based on NLCD (2011).



(a)



(b)

Figure 2.9: Summary of land use (top) and crop type (bottom) within the within the study area (based on NLCD (2011)).