

Figure 7.24: Distribution of soil type.

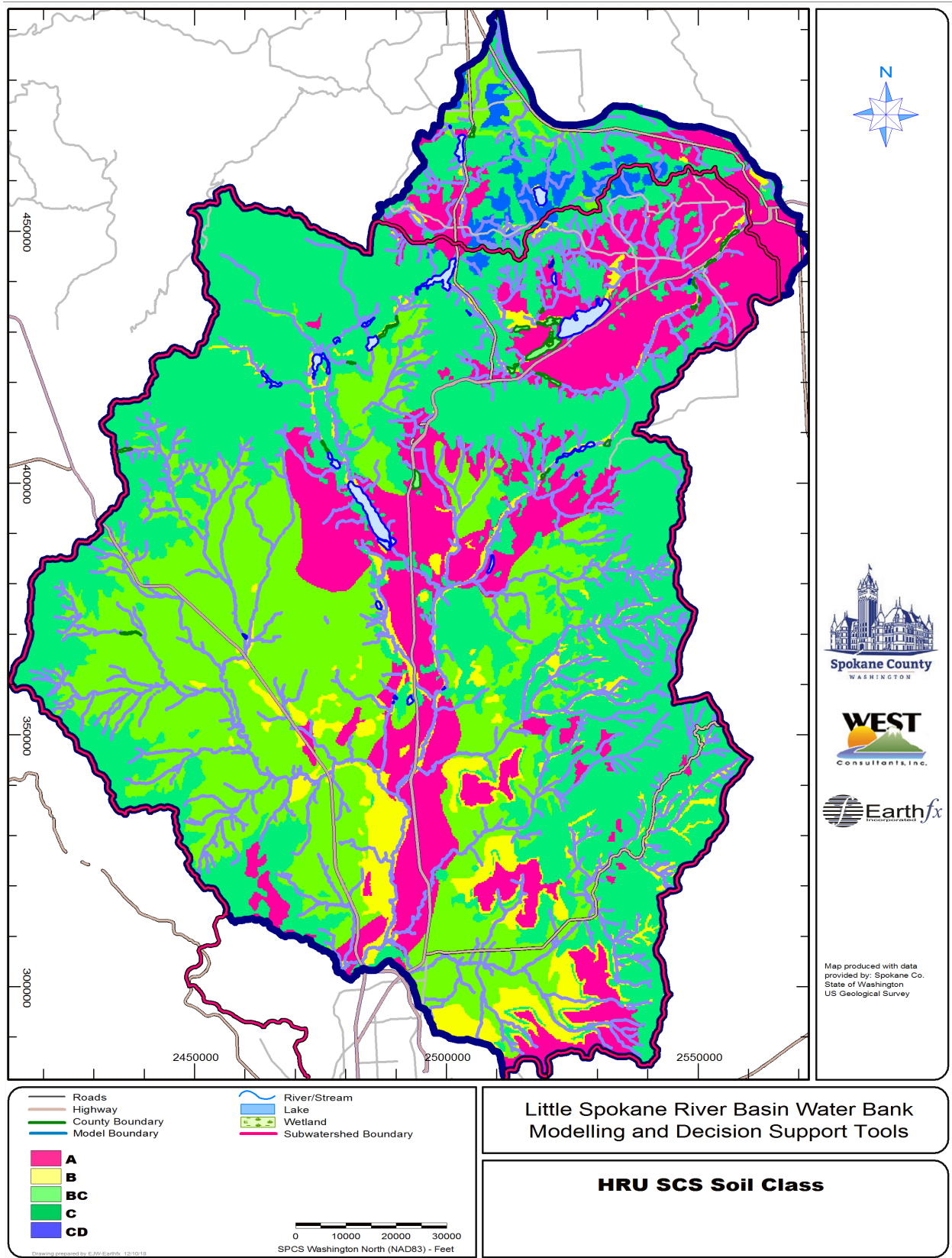


Figure 7.25: Distribution of SCS Soil Class (A-D).

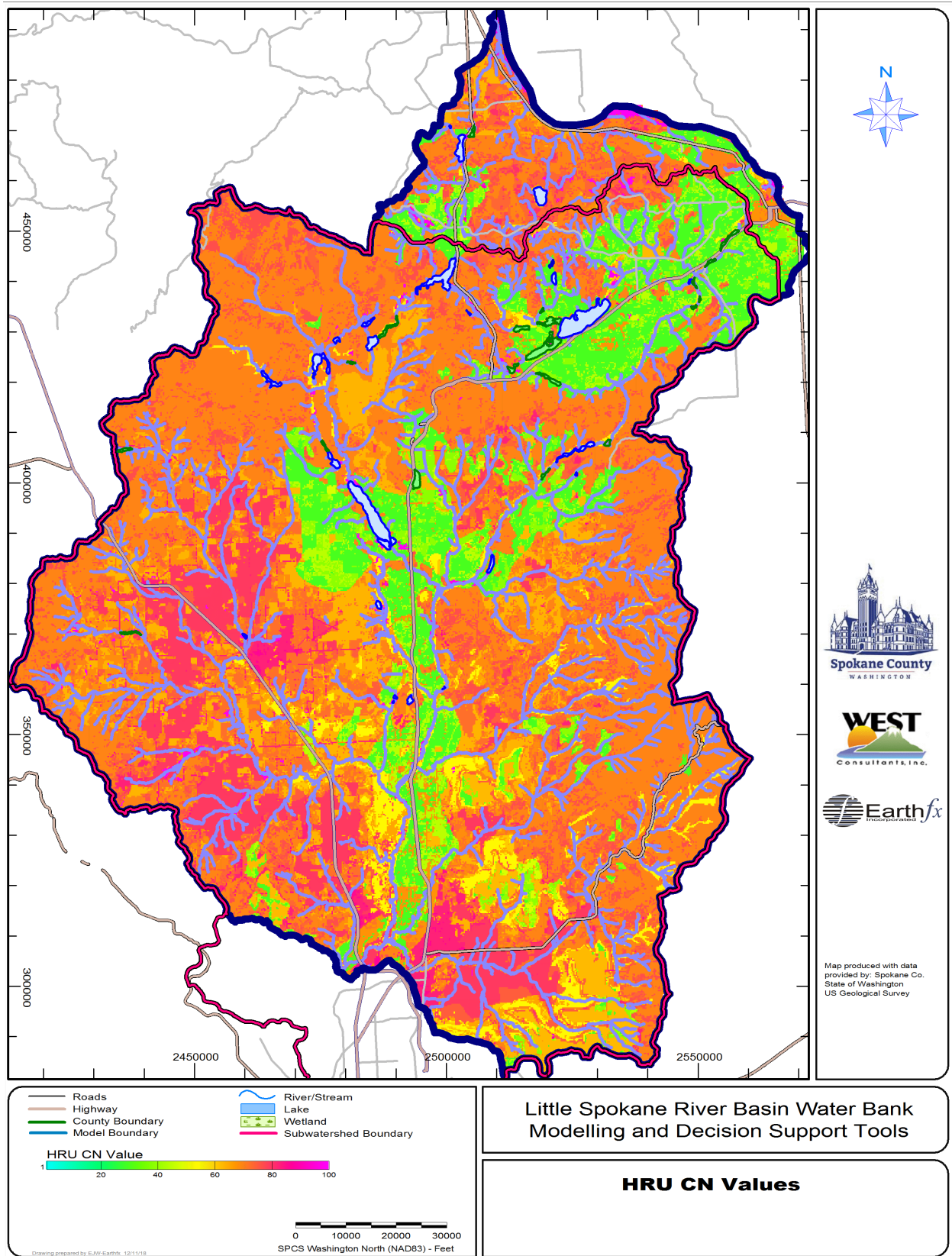


Figure 7.26: Distribution of SCS CN values based on land use and soil class.

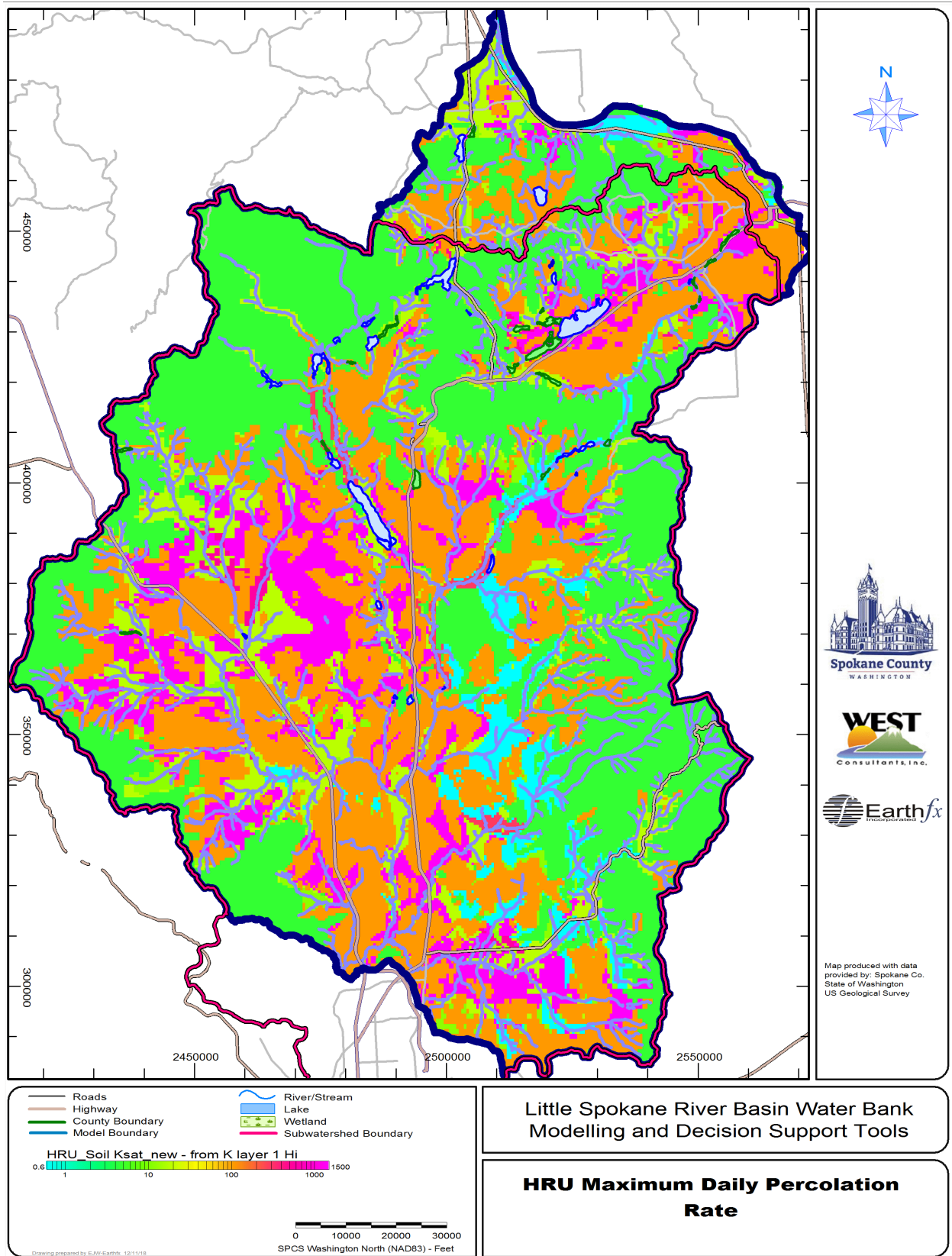


Figure 7.27: Distribution of the maximum daily soil zone percolation rates (in/d).

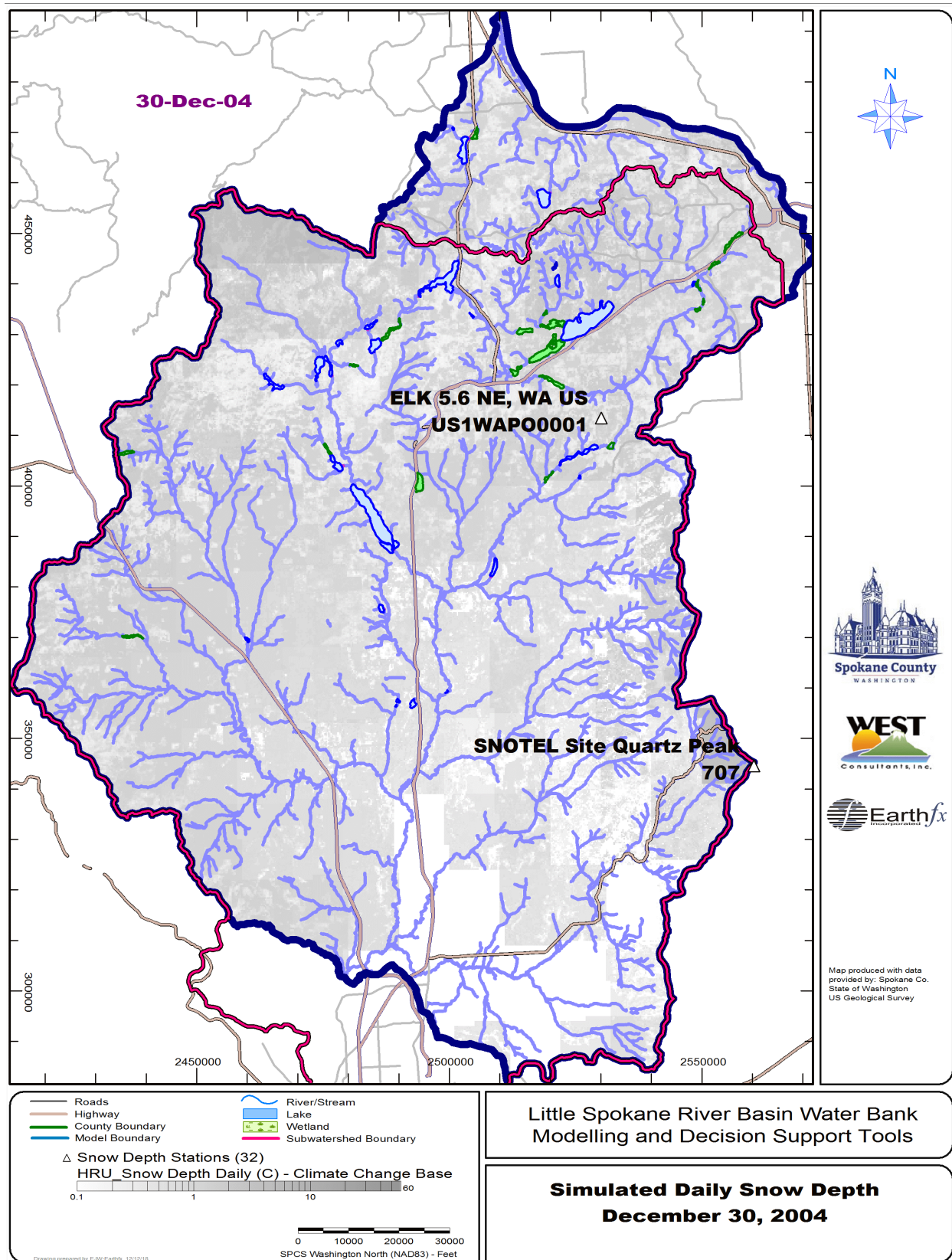
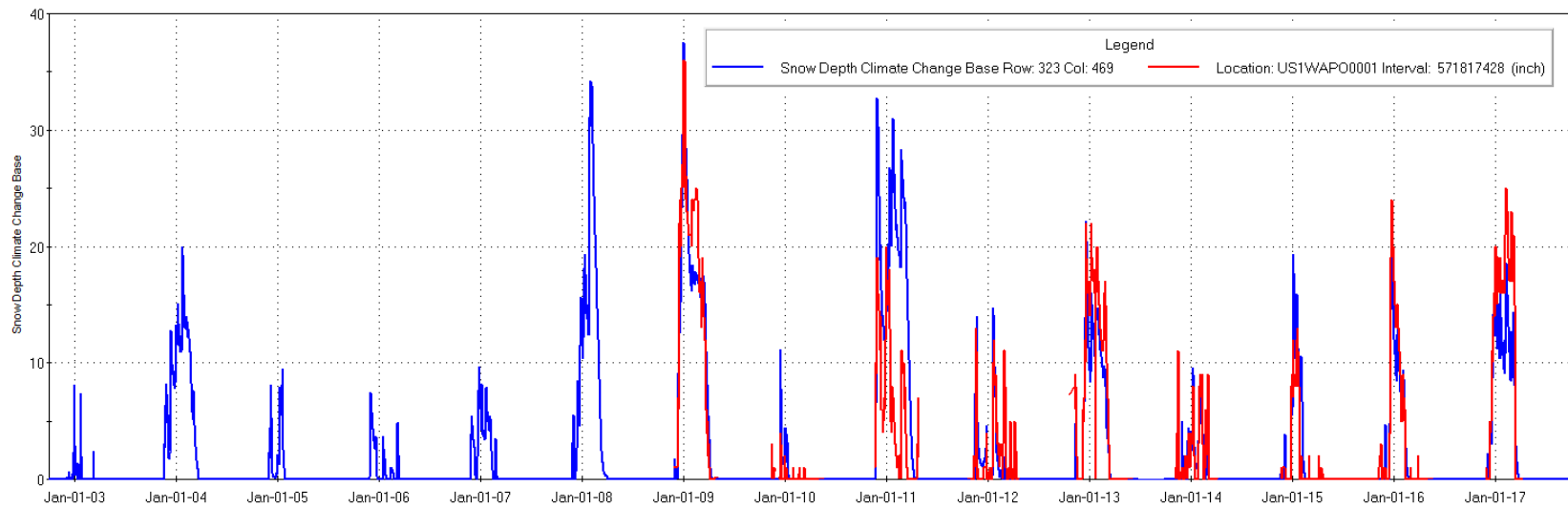
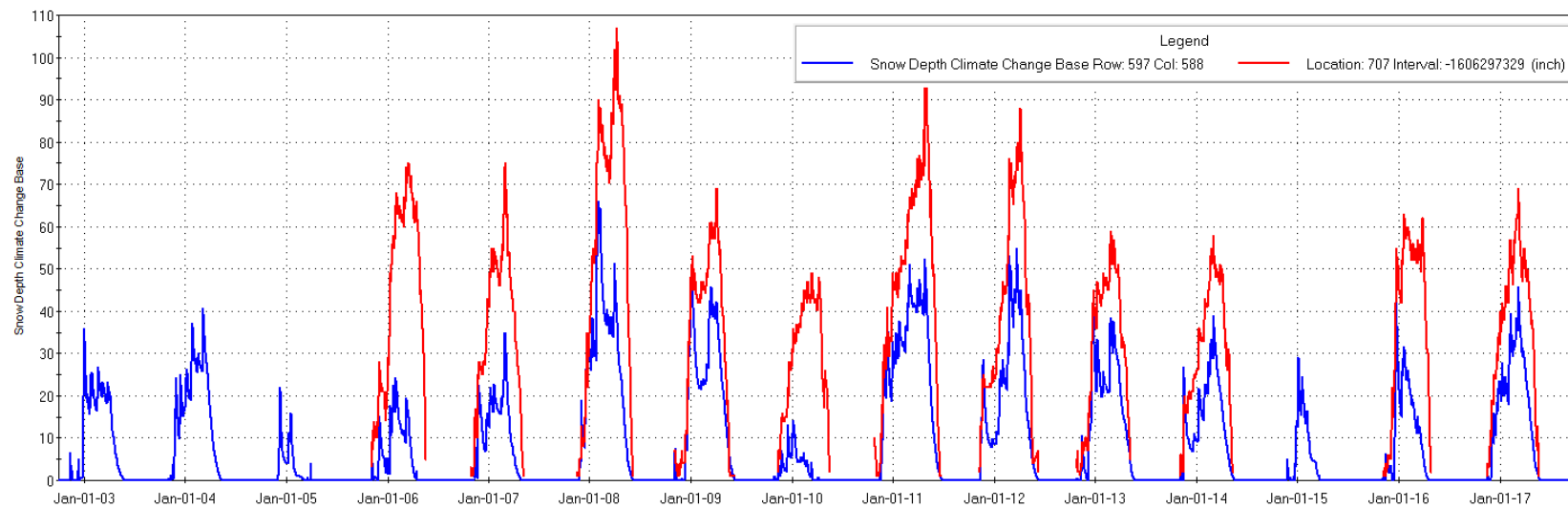


Figure 7.28: Location of snow-depth stations and simulated daily snow depth (inches) on December 30, 2004.



(a)



(b)

Figure 7.29: Observed and simulated snowpack depth (inches) at (a) Elk and (b) Quartz Peak.

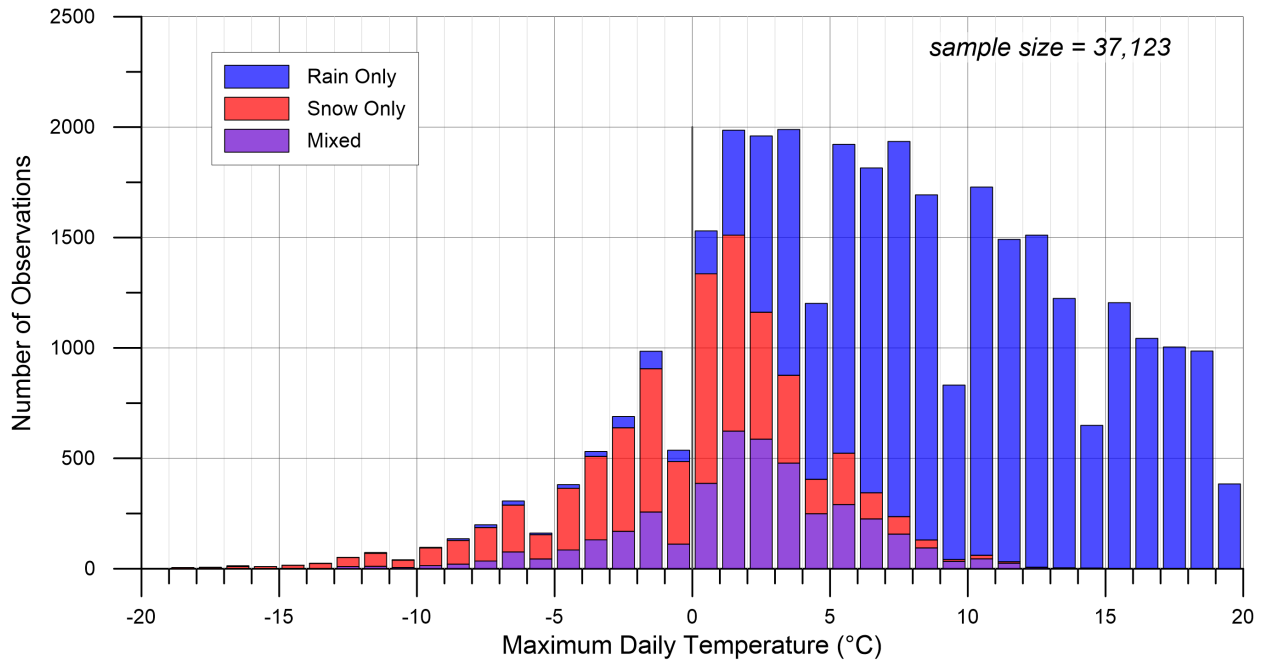


Figure 7.30: Frequency of precipitation form with observed maximum daily temperature at climate stations proximal to the study area.

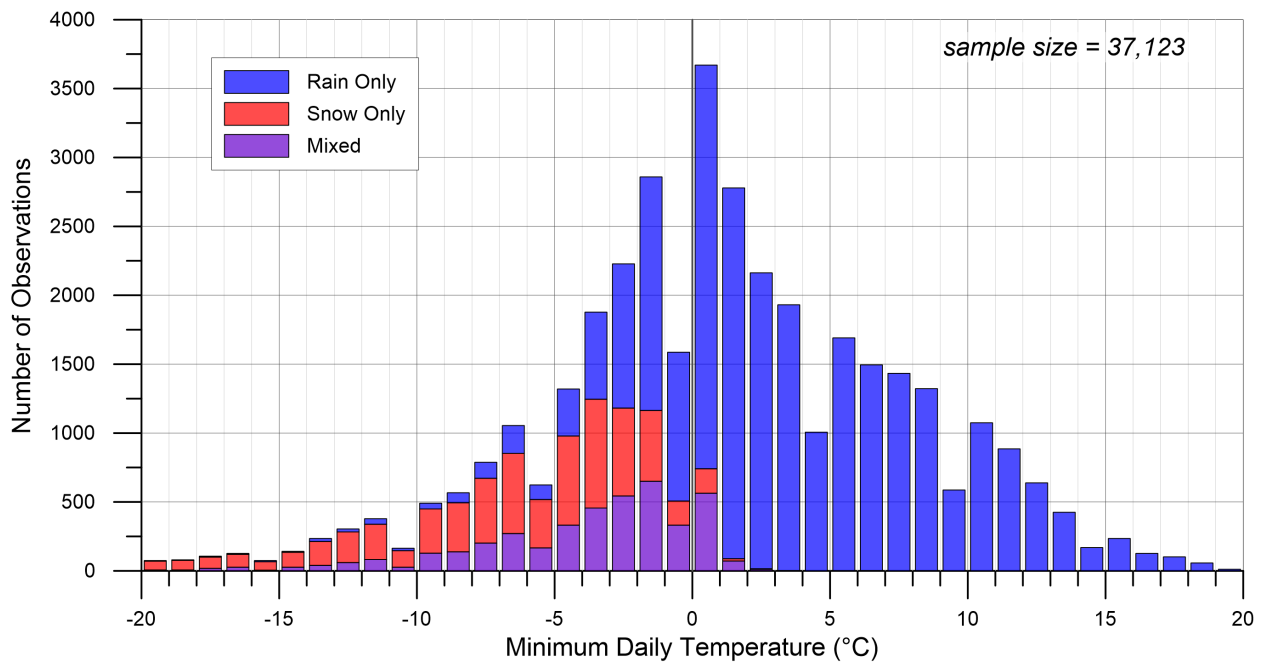


Figure 7.31: Frequency of precipitation form with observed minimum daily temperature at climate stations proximal to the study area.

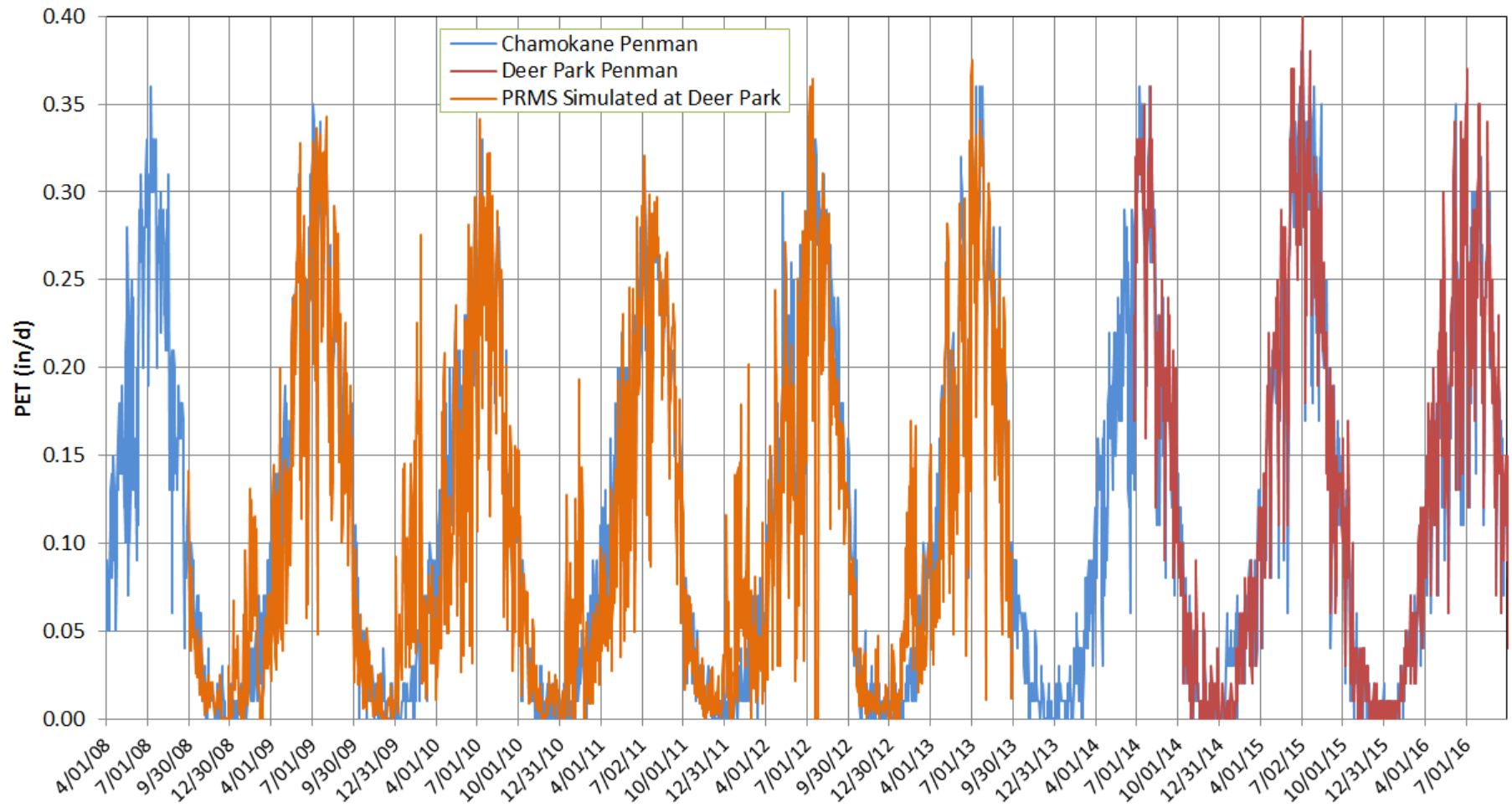


Figure 7.32: Simulated daily PET rates calculated by PRMS using the modified Jensen Haise method compared with PET measurements at Chamokane and Deer Park using the Penman method.