

10.6 Figures

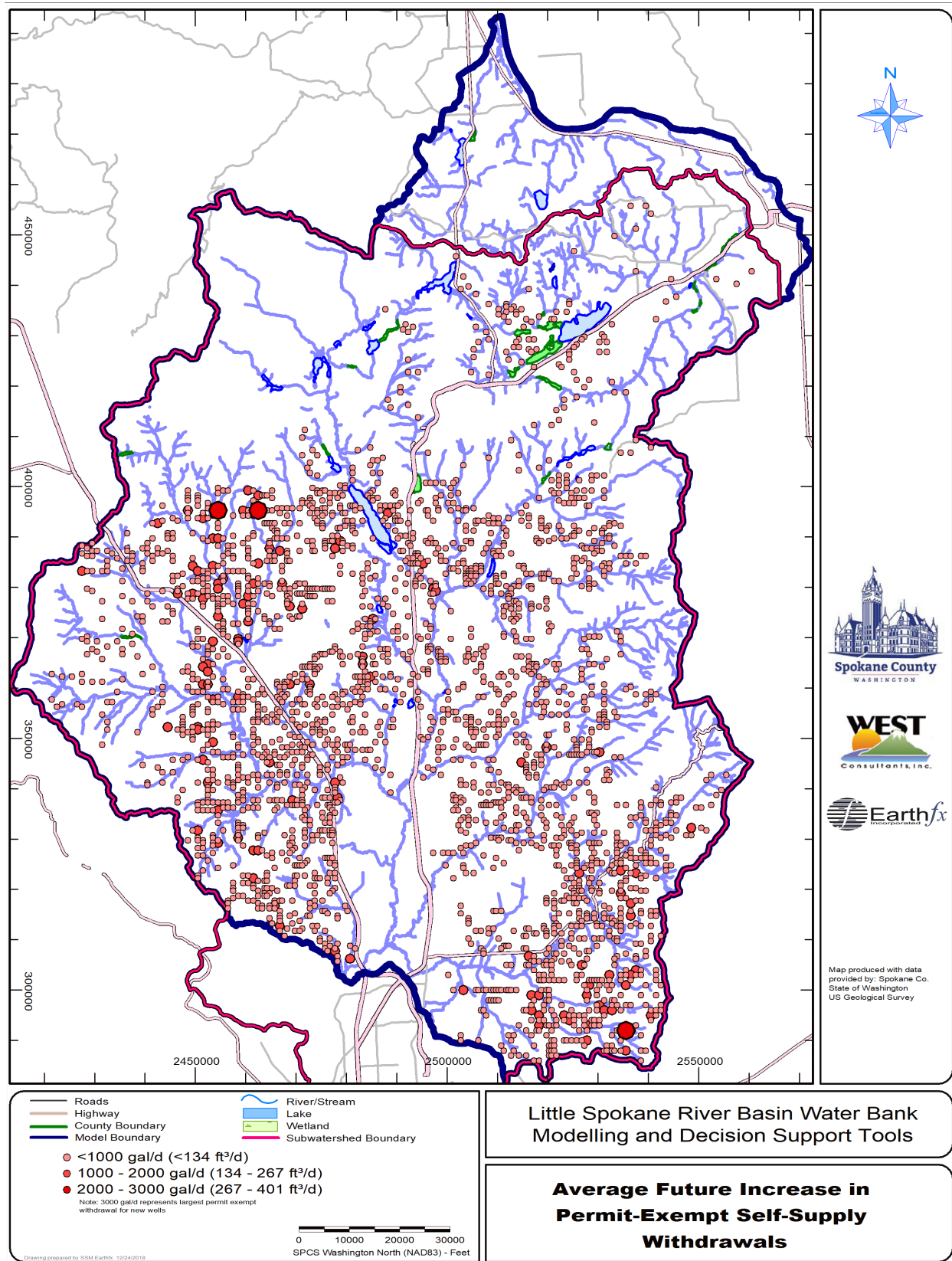


Figure 10.2: Increase in withdrawals for permit-exempt self-supply.

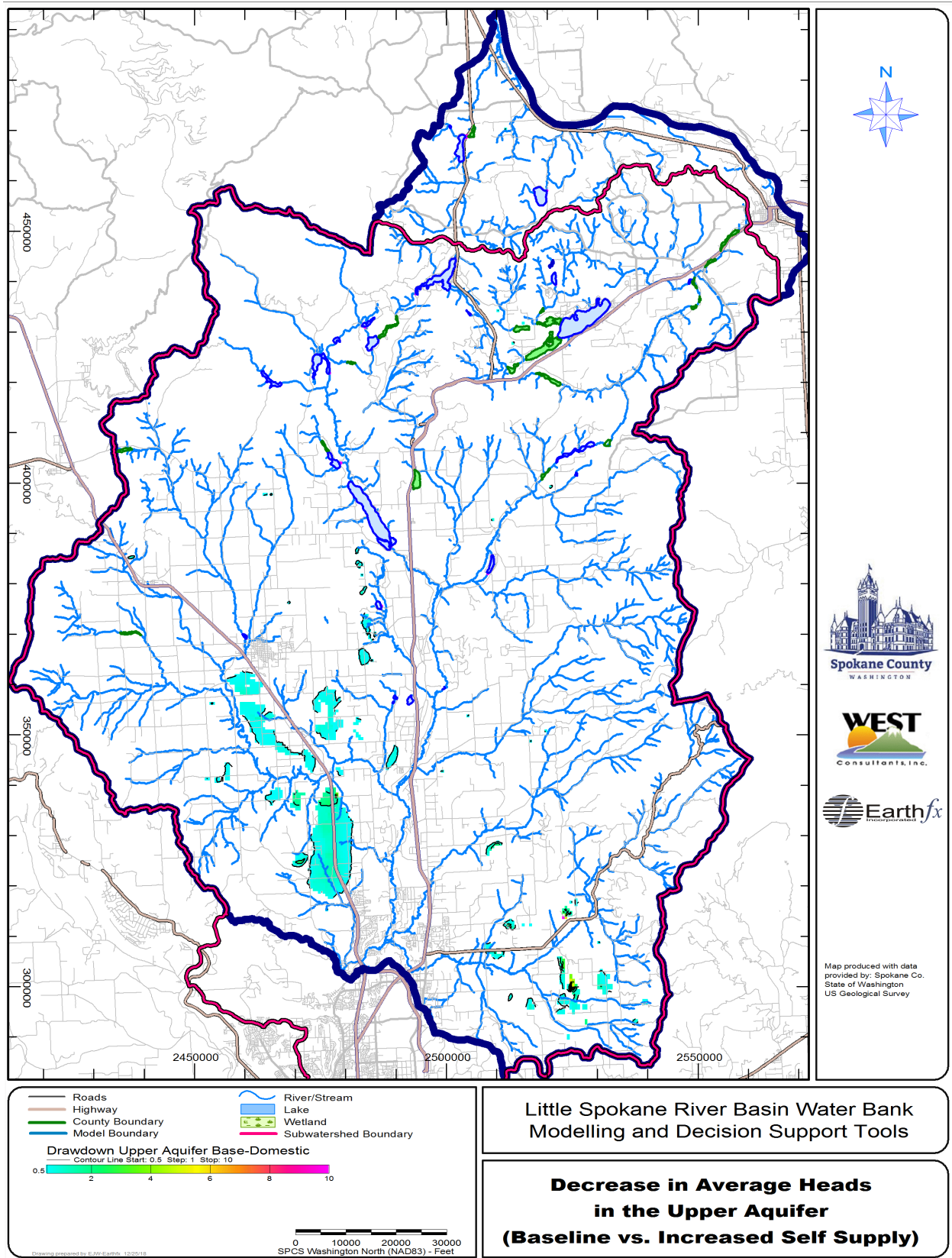


Figure 10.3: Simulated decrease in average heads (ft) in the Upper Aquifer with increased domestic self-supply withdrawals.

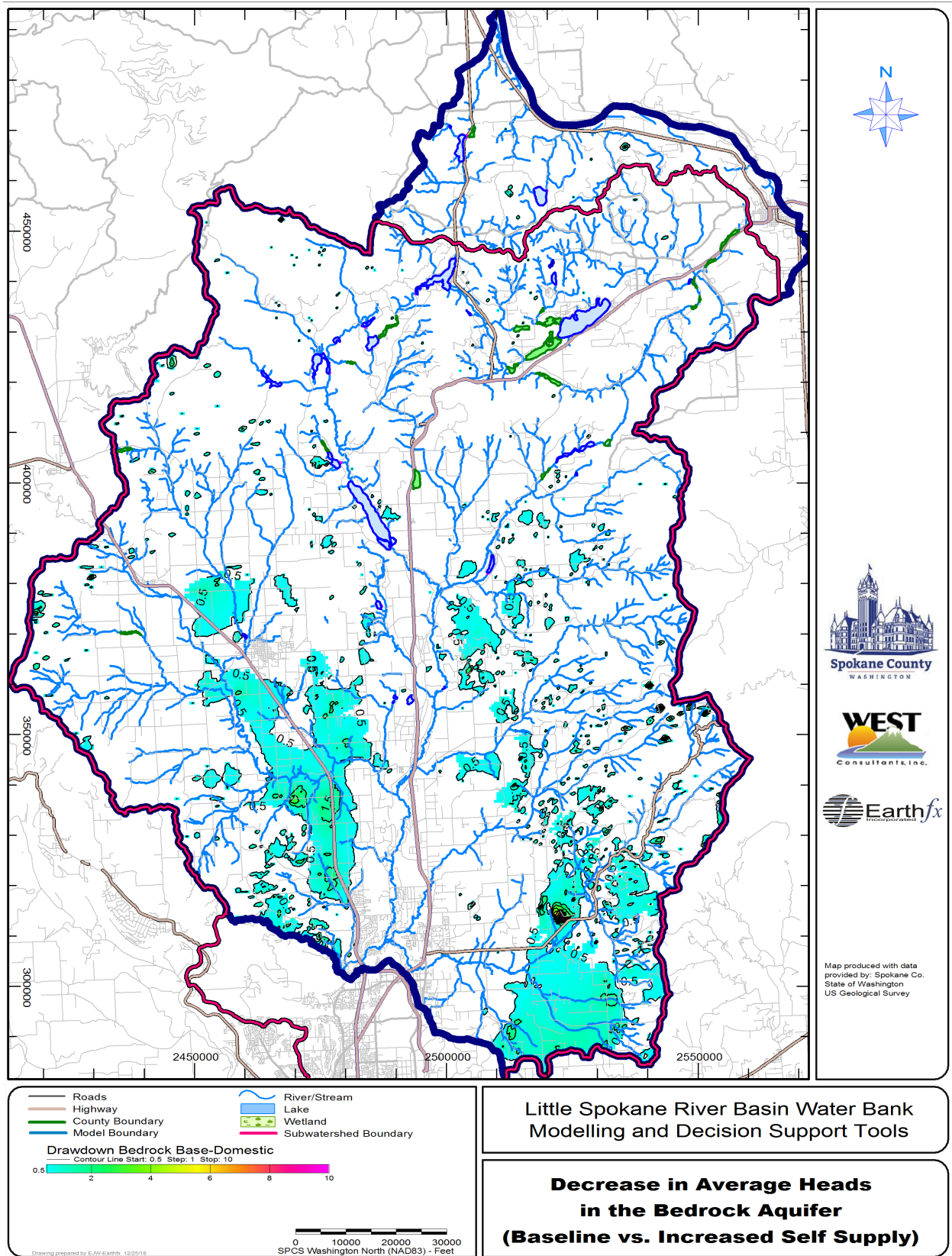


Figure 10.4: Simulated decrease in average heads (ft) in the bedrock aquifer with increased domestic self-supply withdrawals.

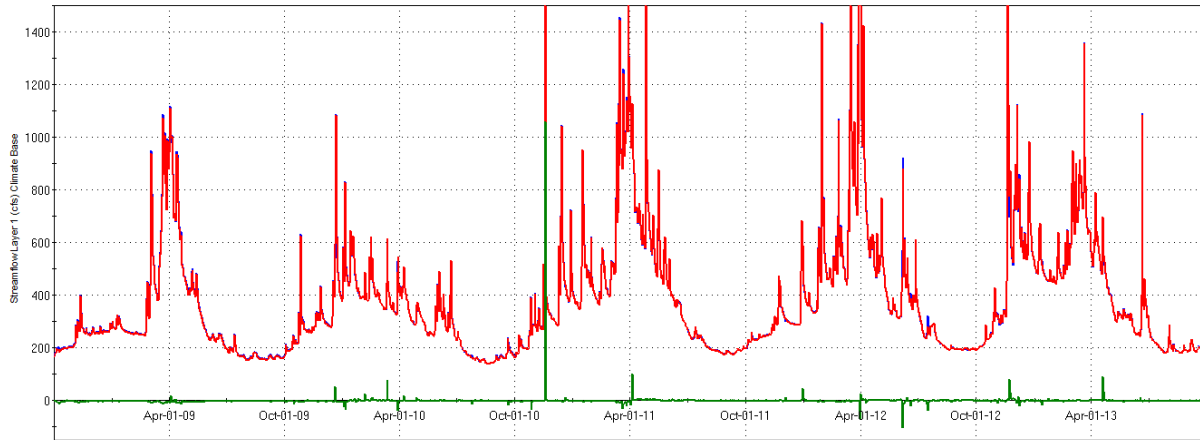


Figure 10.5: Simulated flow at the Dartford gage – baseline (blue) versus increased domestic use scenario (red) and change in flow (green).

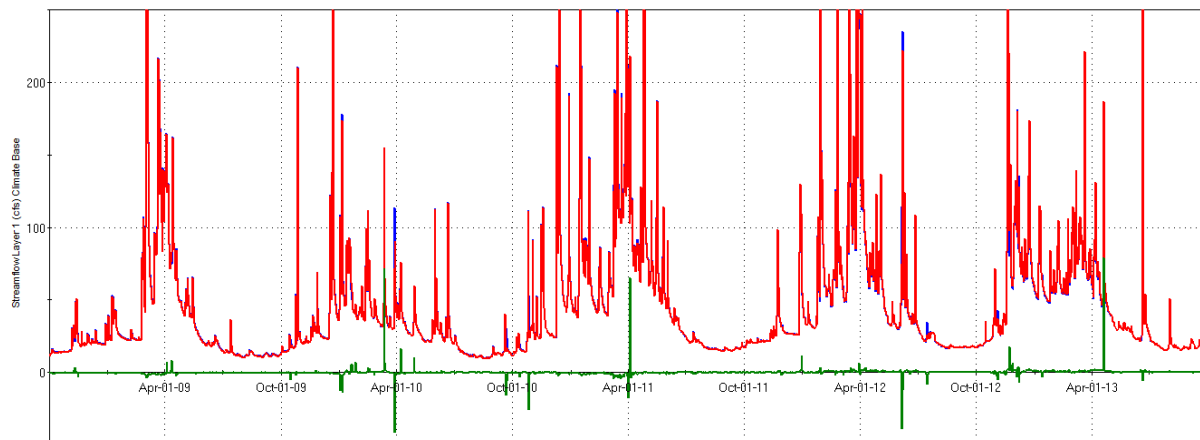


Figure 10.6: Simulated flow at the Deadman gage – baseline (blue) versus increased domestic use scenario (red) and change in flow (green).

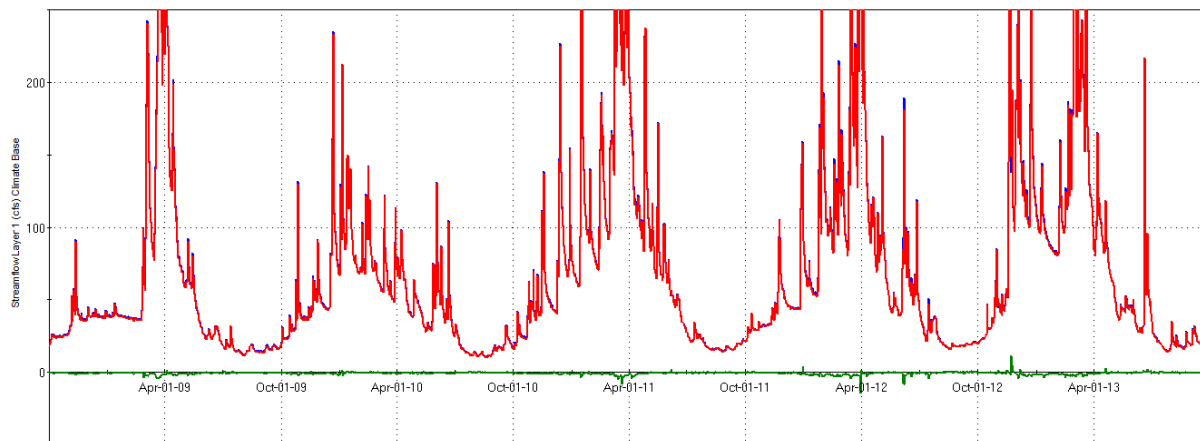


Figure 10.7: Simulated flow at the Dragoon gage – baseline (blue) versus increased domestic use scenario (red) and change in flow (green).

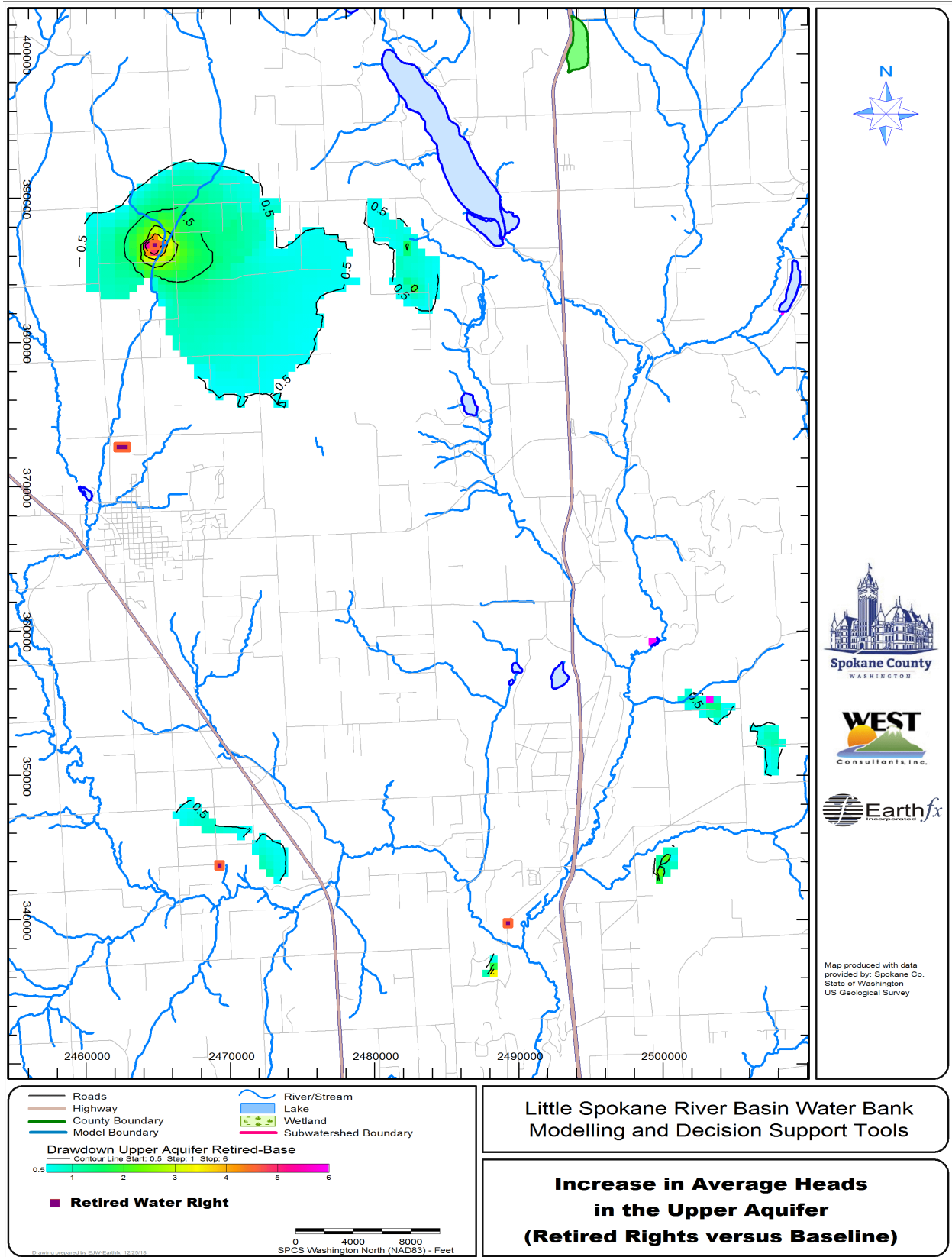


Figure 10.8: Simulated increase in average heads (ft) in the Upper Aquifer with four retired water rights.

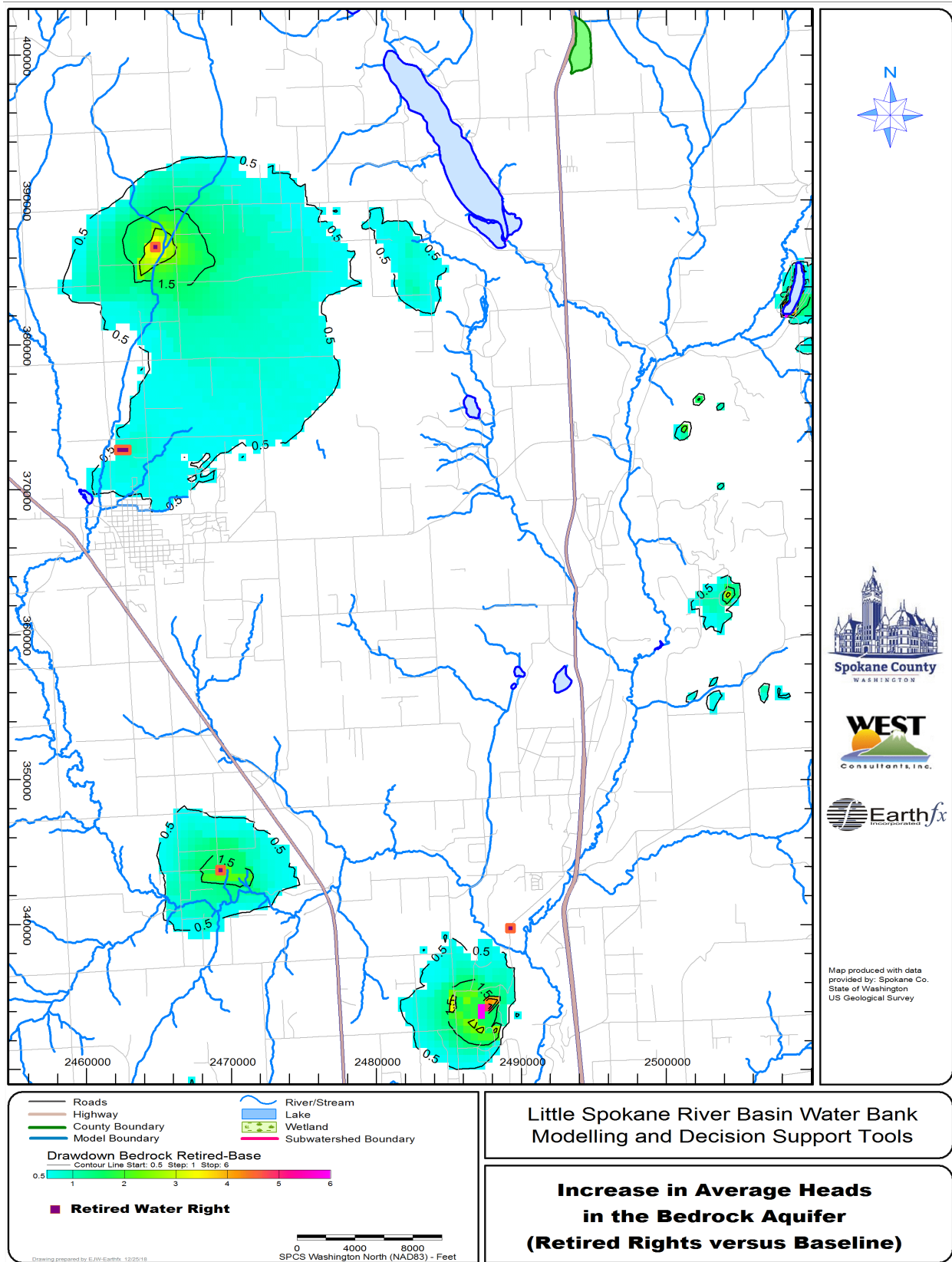


Figure 10.9: Simulated increase in average heads (ft) in the bedrock aquifer with four retired water rights.

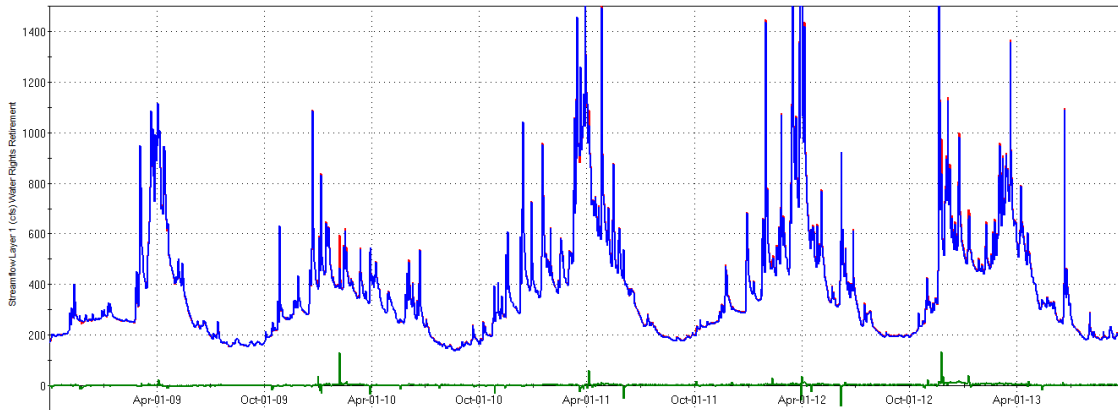


Figure 10.10: Simulated flow at the Dartford gage – baseline (blue) versus retired water rights scenario (red) and change in flow (green).

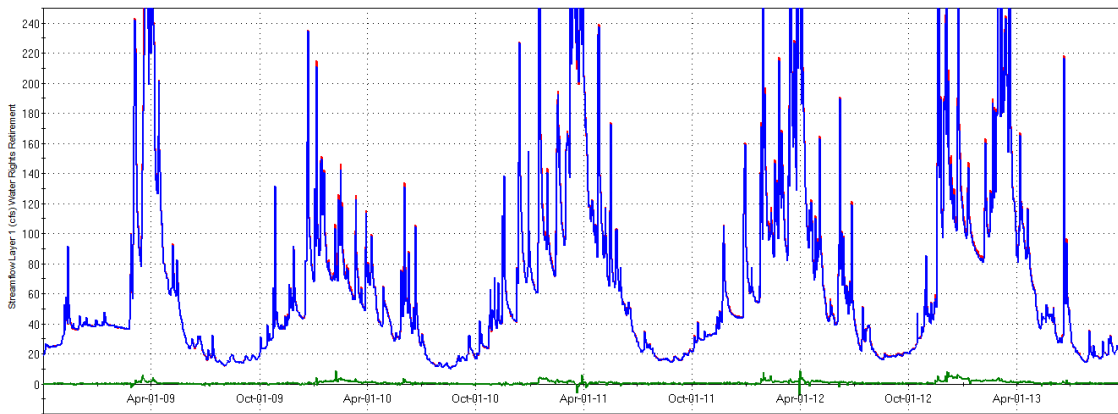


Figure 10.11: Simulated flow at the Dragoon Creek gage – baseline (blue) versus retired water rights scenario (red) and change in flow (green).

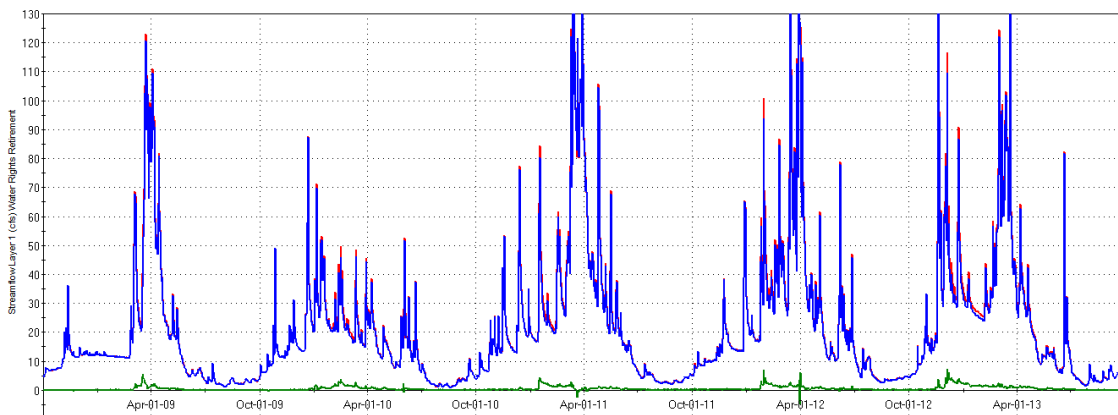


Figure 10.12: Simulated flow at Dragoon Creek at Hwy. 395 below Deer Park – baseline (blue) versus retired water rights scenario (red) and change in flow (green).

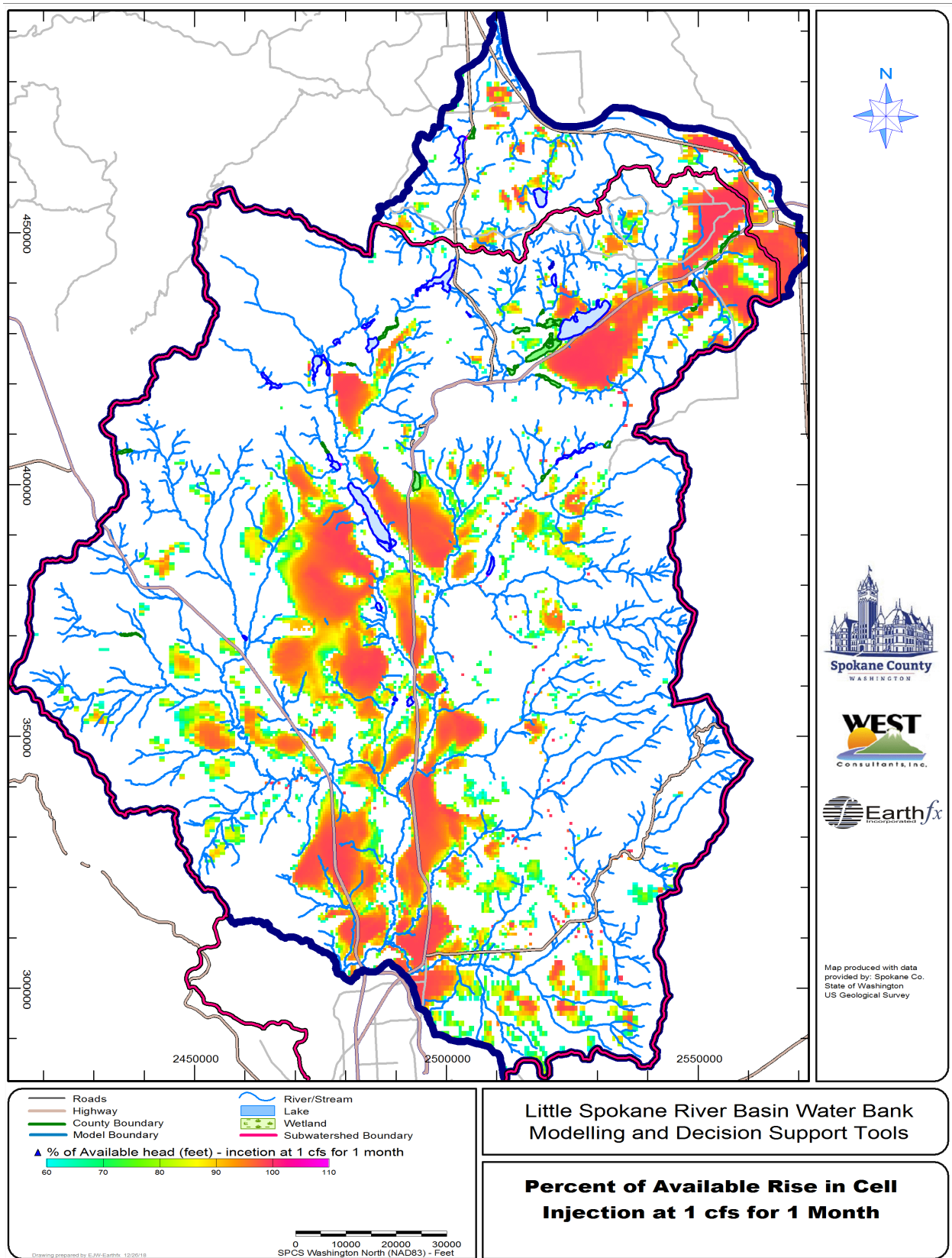


Figure 10.13: Percent of available rise left in cell after injection of 1 cfs for 1 month.