

Figure 9.35: Distribution of residuals (observed - simulated) in the Grande Ronde Basalt aquifer.

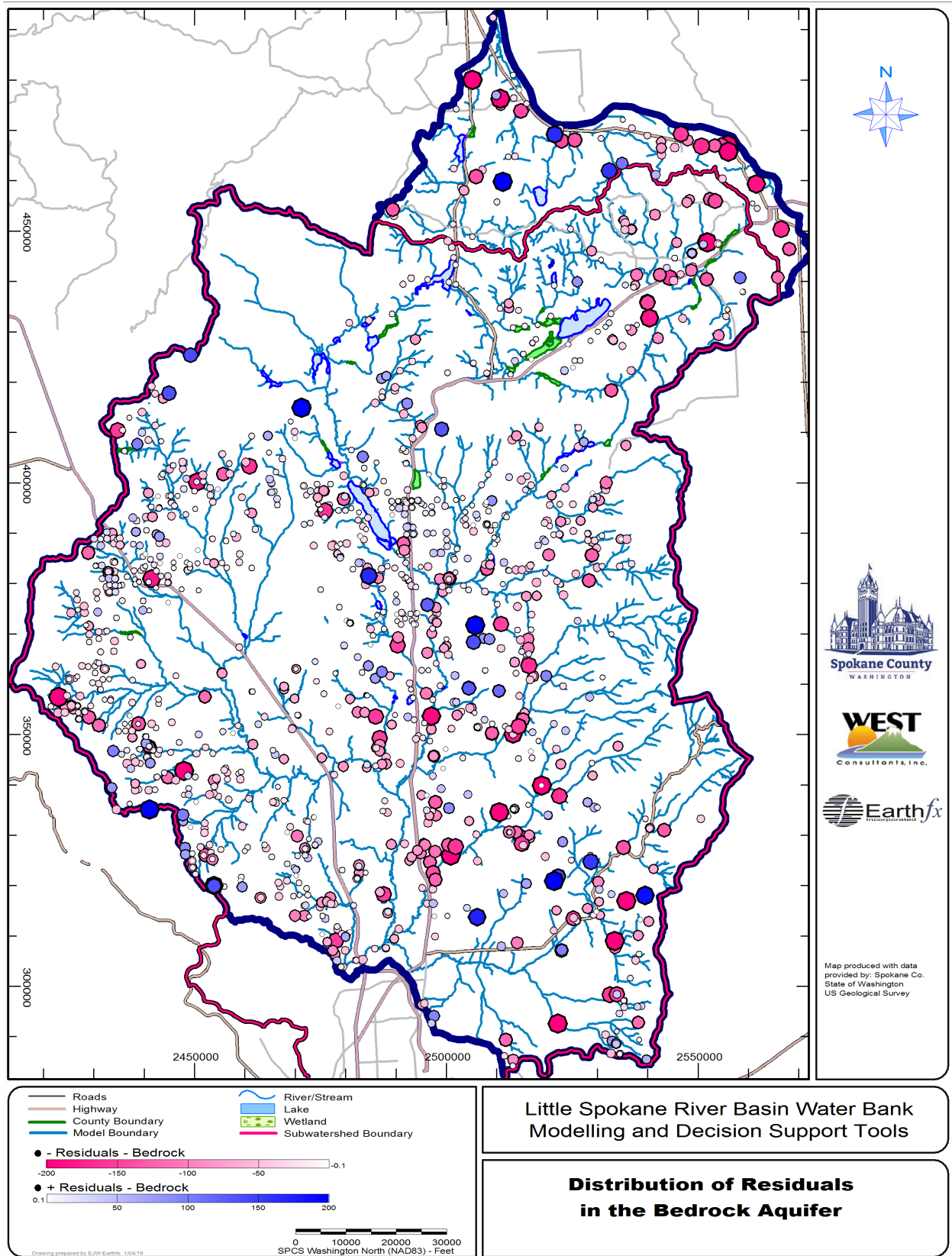


Figure 9.36: Distribution of residuals (observed - simulated) in the bedrock aquifer.

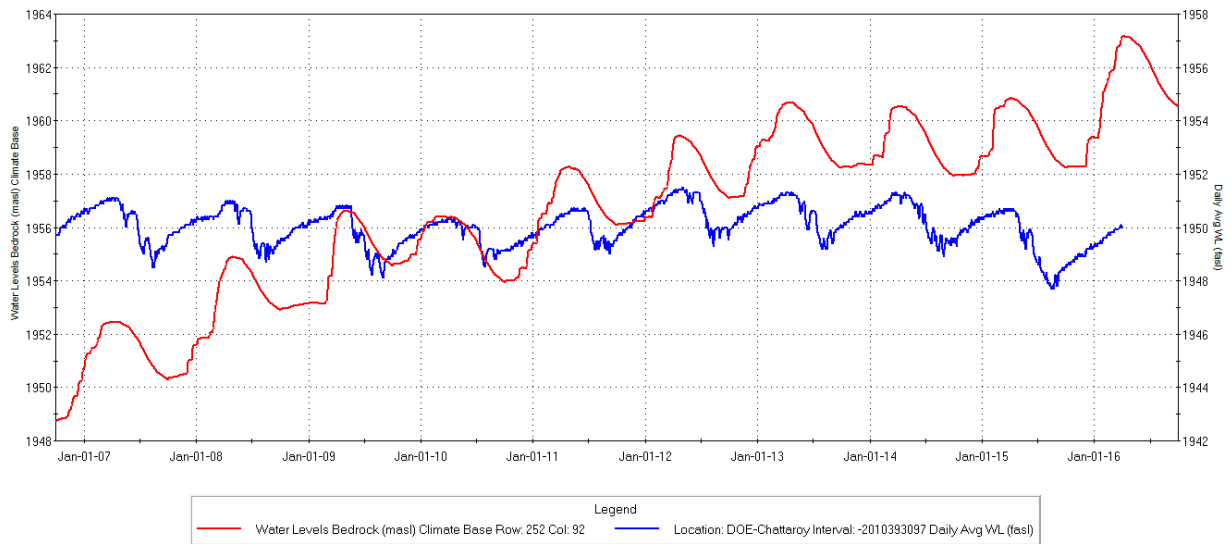


Figure 9.37: Hydrograph for the DOE-Chattaroy bedrock aquifer well showing simulated (red) and observed (blue) groundwater levels.

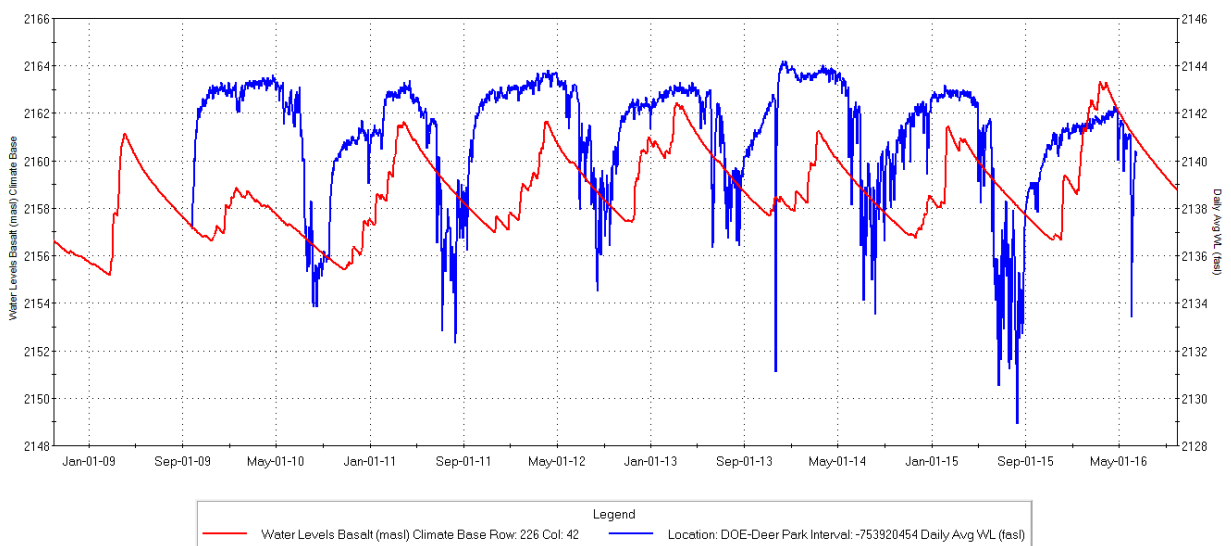


Figure 9.38: Hydrograph for the DOE-Deer Park Grand Ronde Basalt well showing simulated (red) and observed (blue) groundwater levels.

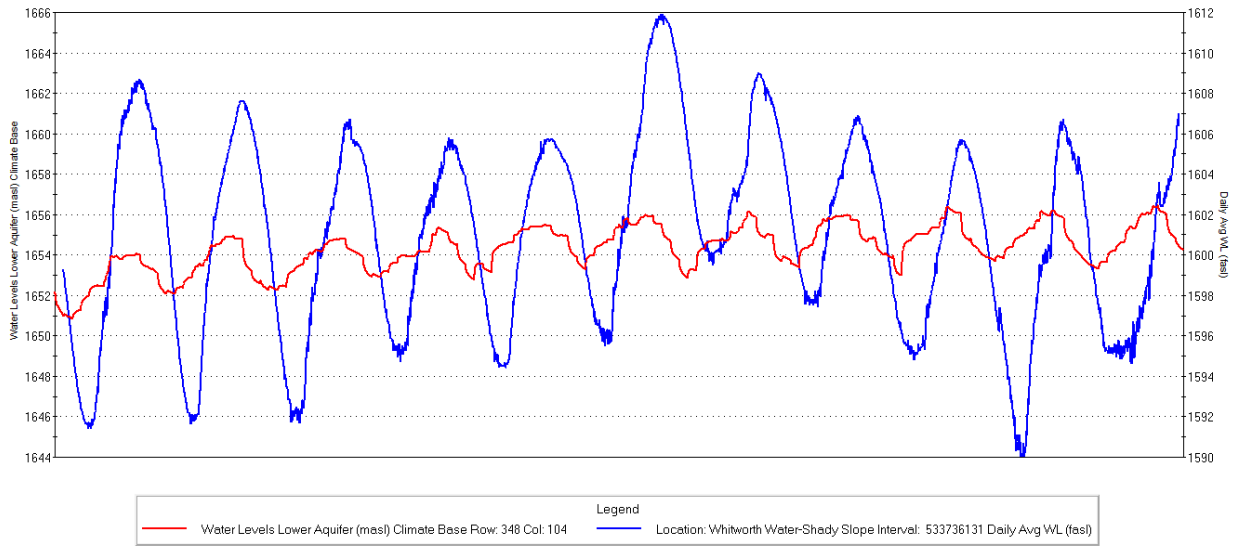


Figure 9.39: Hydrograph for the Whitworth Water-Shady Slope Lower Aquifer well showing simulated (red) and observed (blue) groundwater levels.

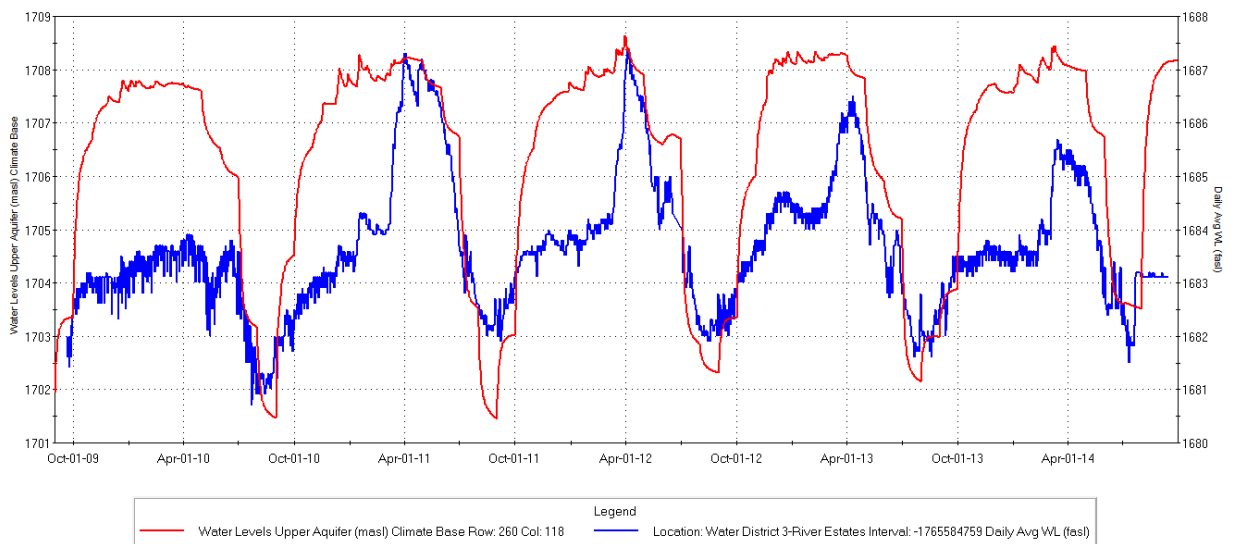


Figure 9.40: Hydrograph for the SCWD#3 River Estates Upper Aquifer well showing simulated (red) and observed (blue) groundwater levels.

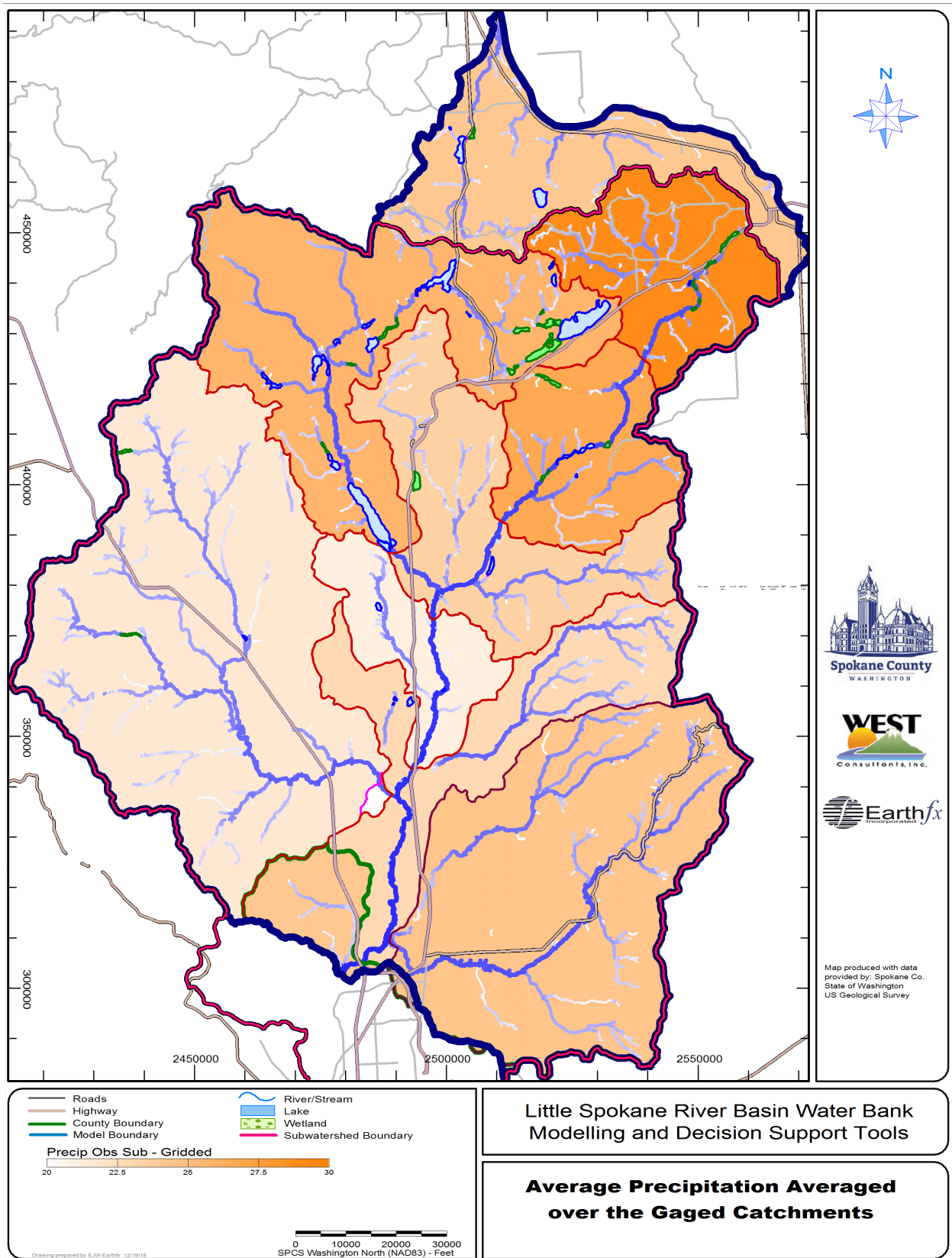


Figure 9.41: Averaged precipitation (in/yr) for the simulation period averaged over each gaged catchment.

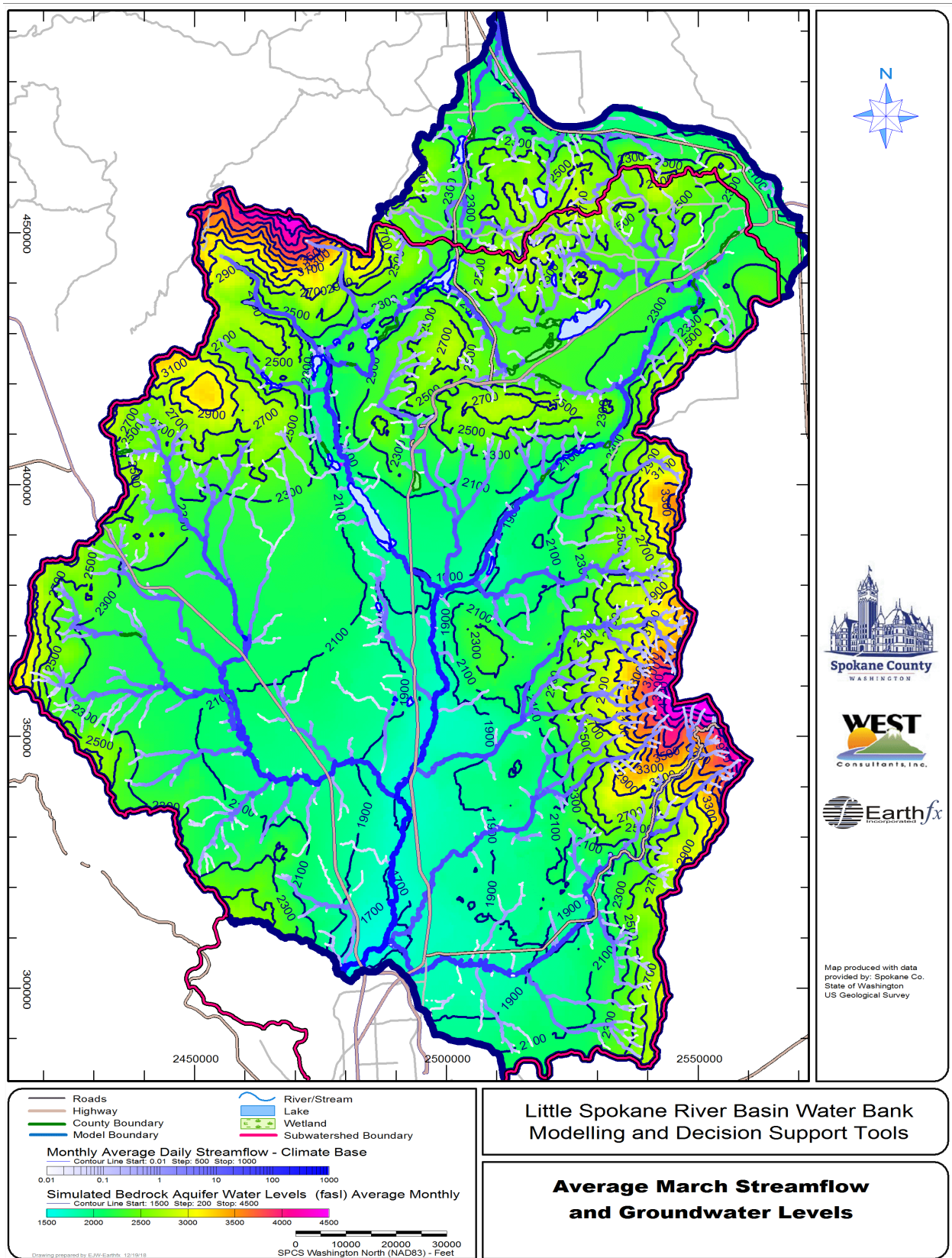


Figure 9.42: Simulated average March heads in the bedrock aquifer (fasl) and simulated streamflow (cfs).

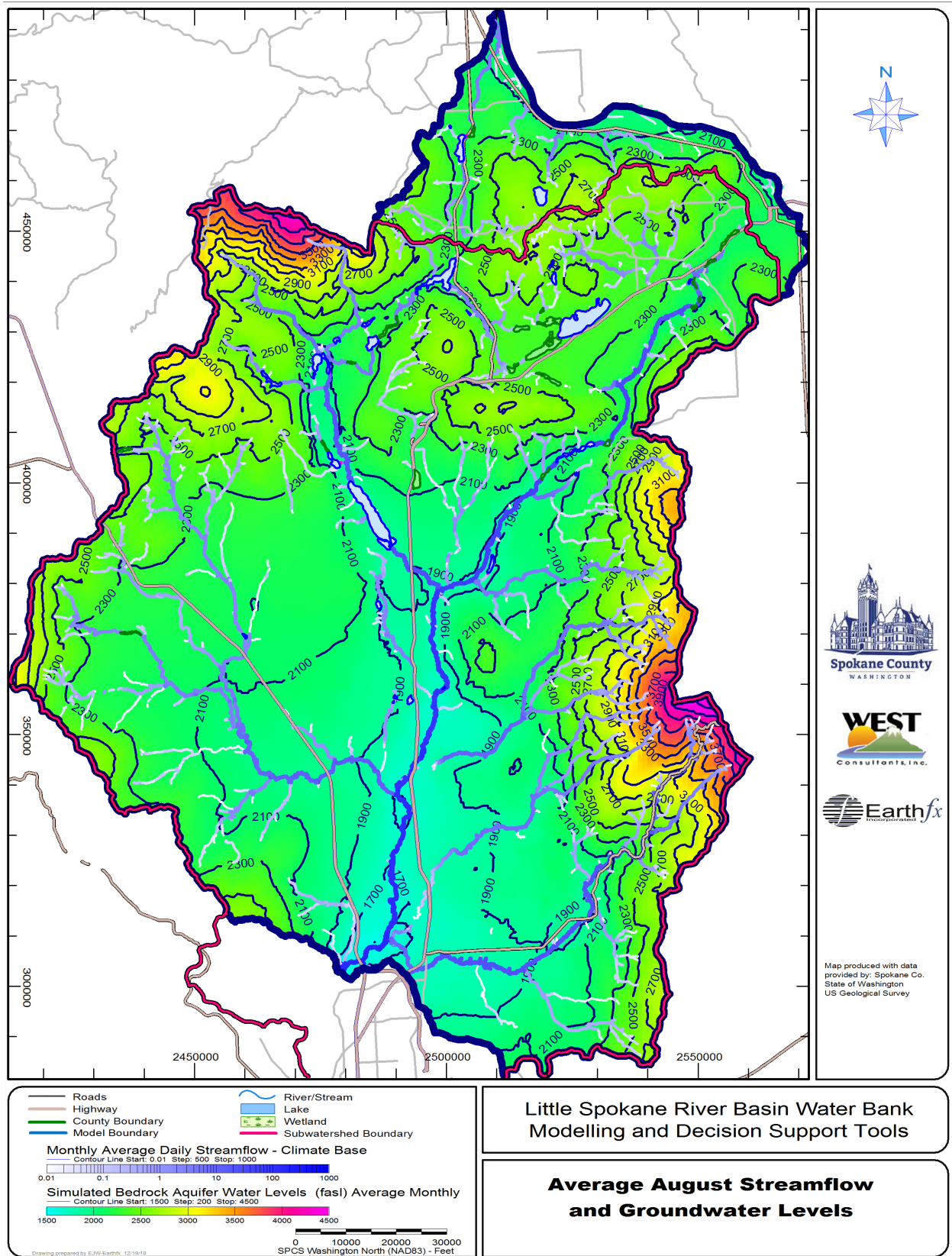


Figure 9.43: Simulated average August heads in the bedrock aquifer (fasl) and simulated streamflow (cfs).

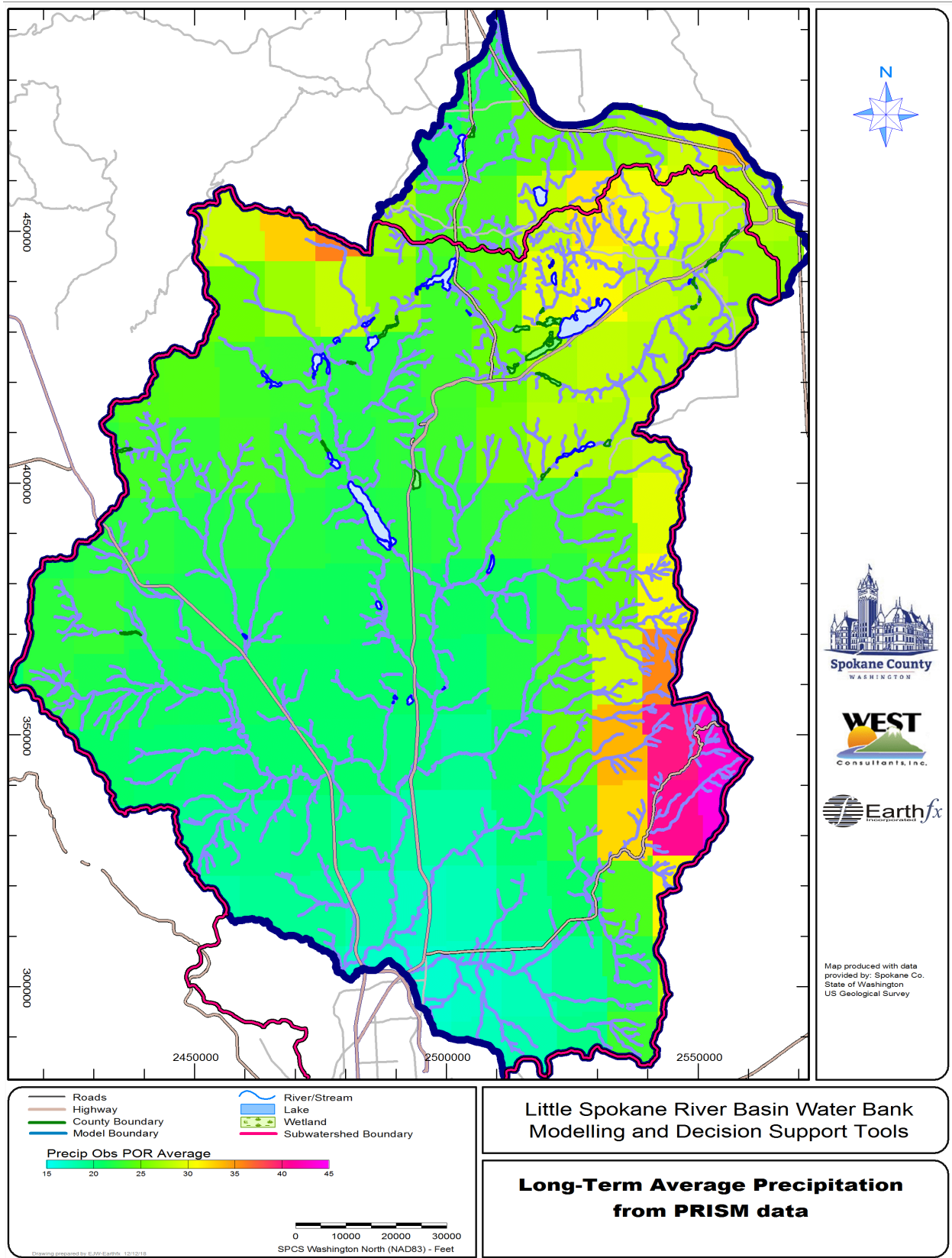


Figure 9.44: Average annual precipitation (in/yr), based on PRISM data.



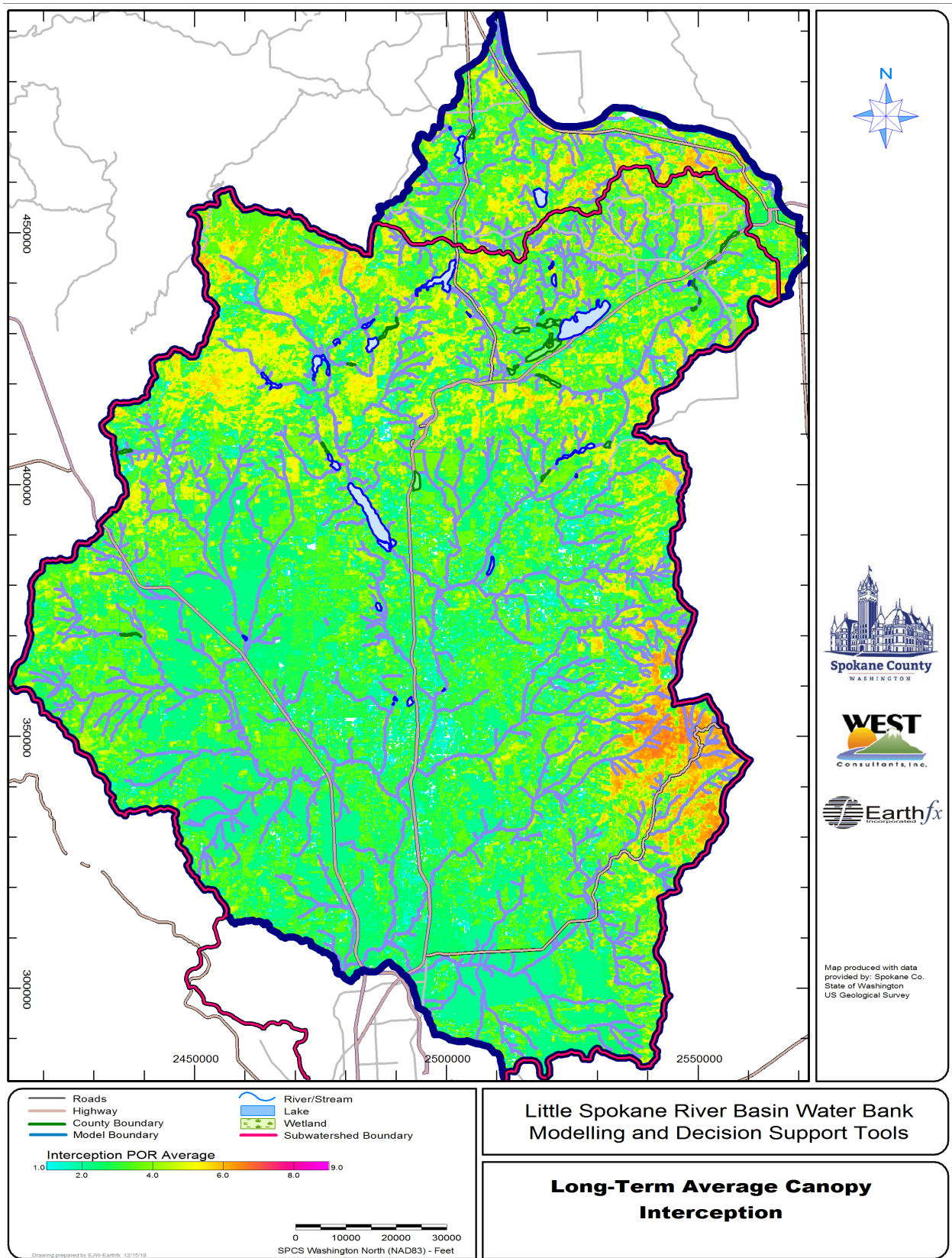


Figure 9.45: Average annual canopy interception (in/yr).