

Figure 3.30: Estimation variance for water levels in the Upper Aquifer.

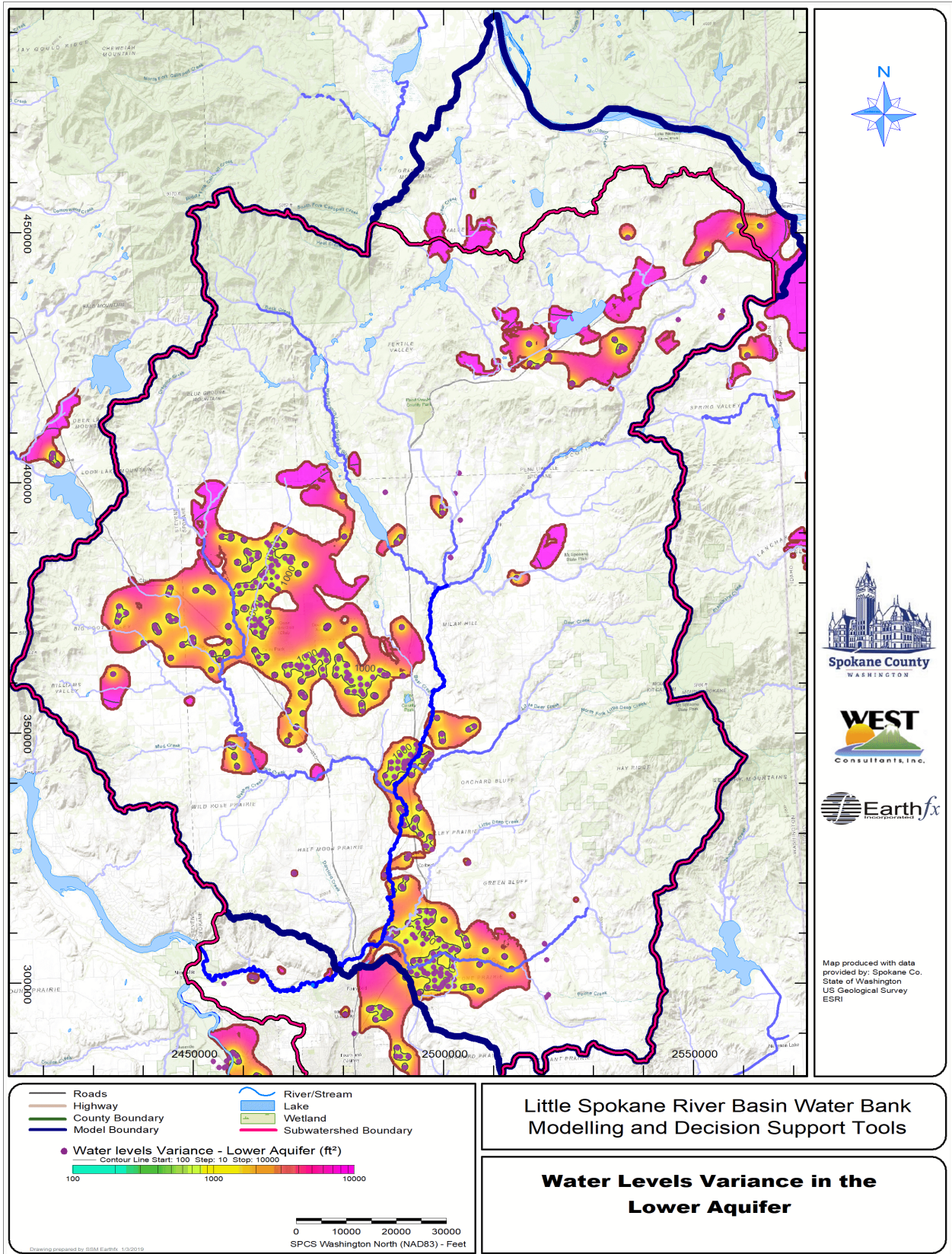


Figure 3.31: Estimation variance for water levels in the Lower Aquifers.

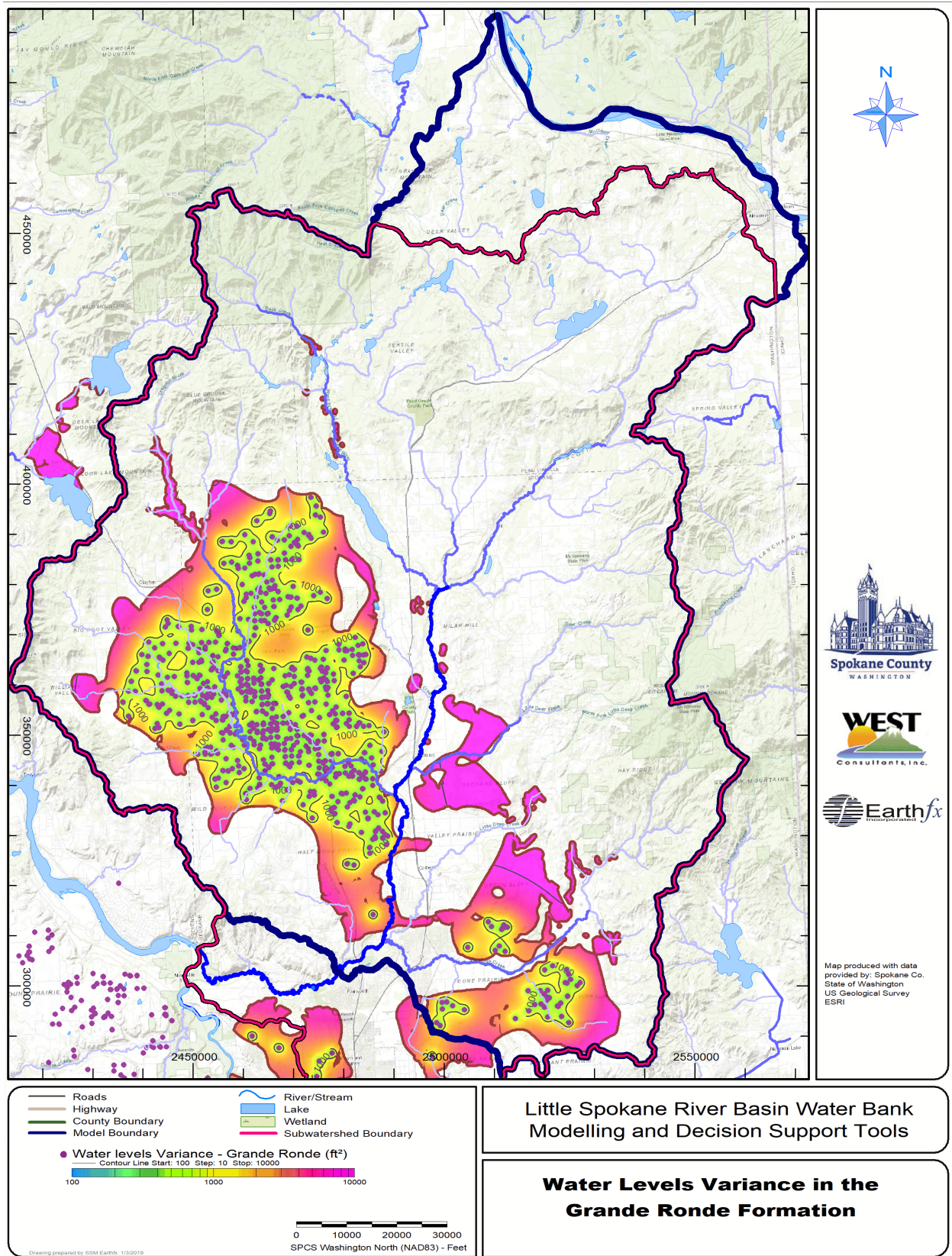


Figure 3.32: Estimation variance for water levels in the Grande Ronde Basalt aquifer.

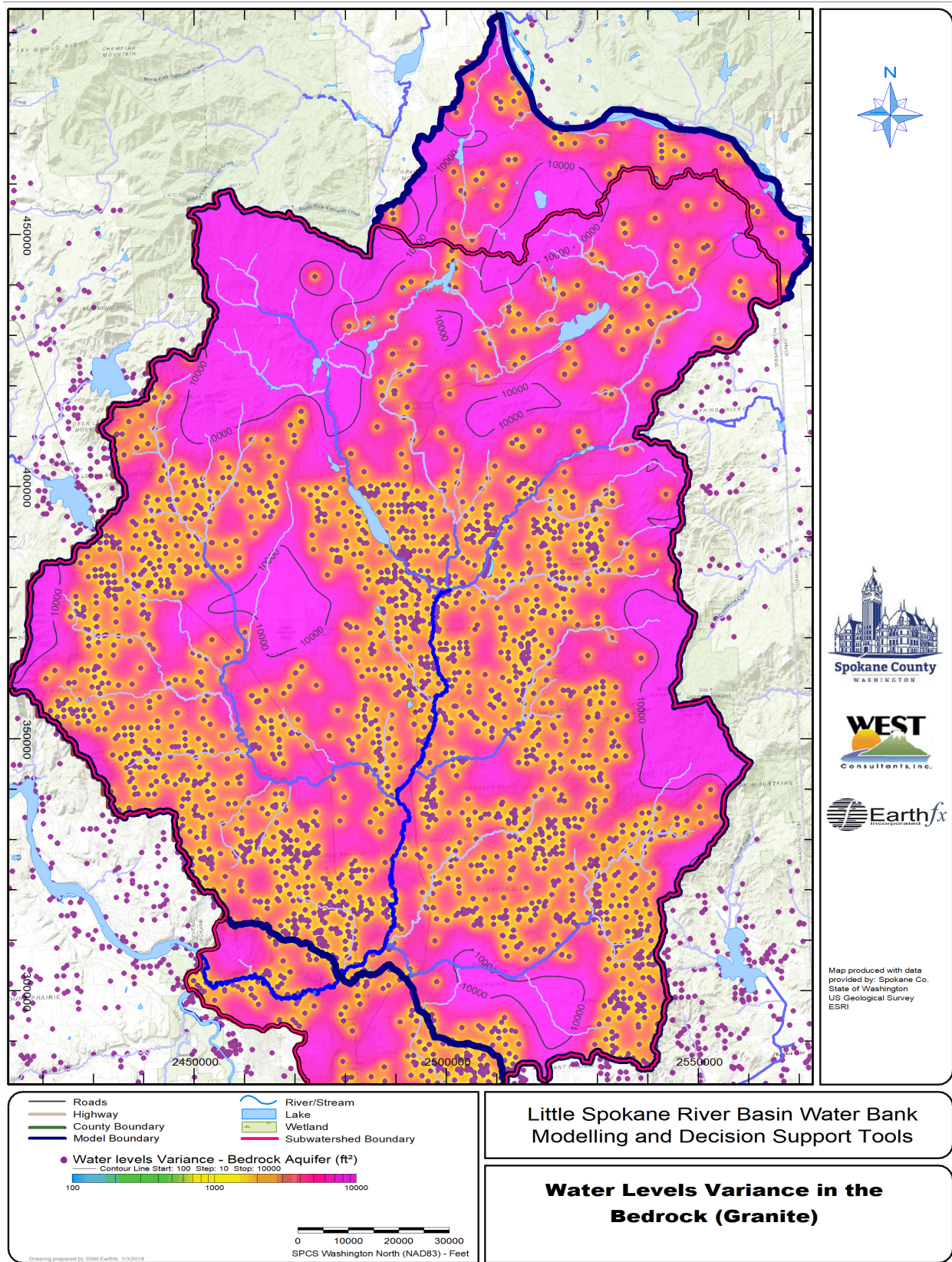


Figure 3.33: Estimation variance for water levels in the bedrock aquifer.

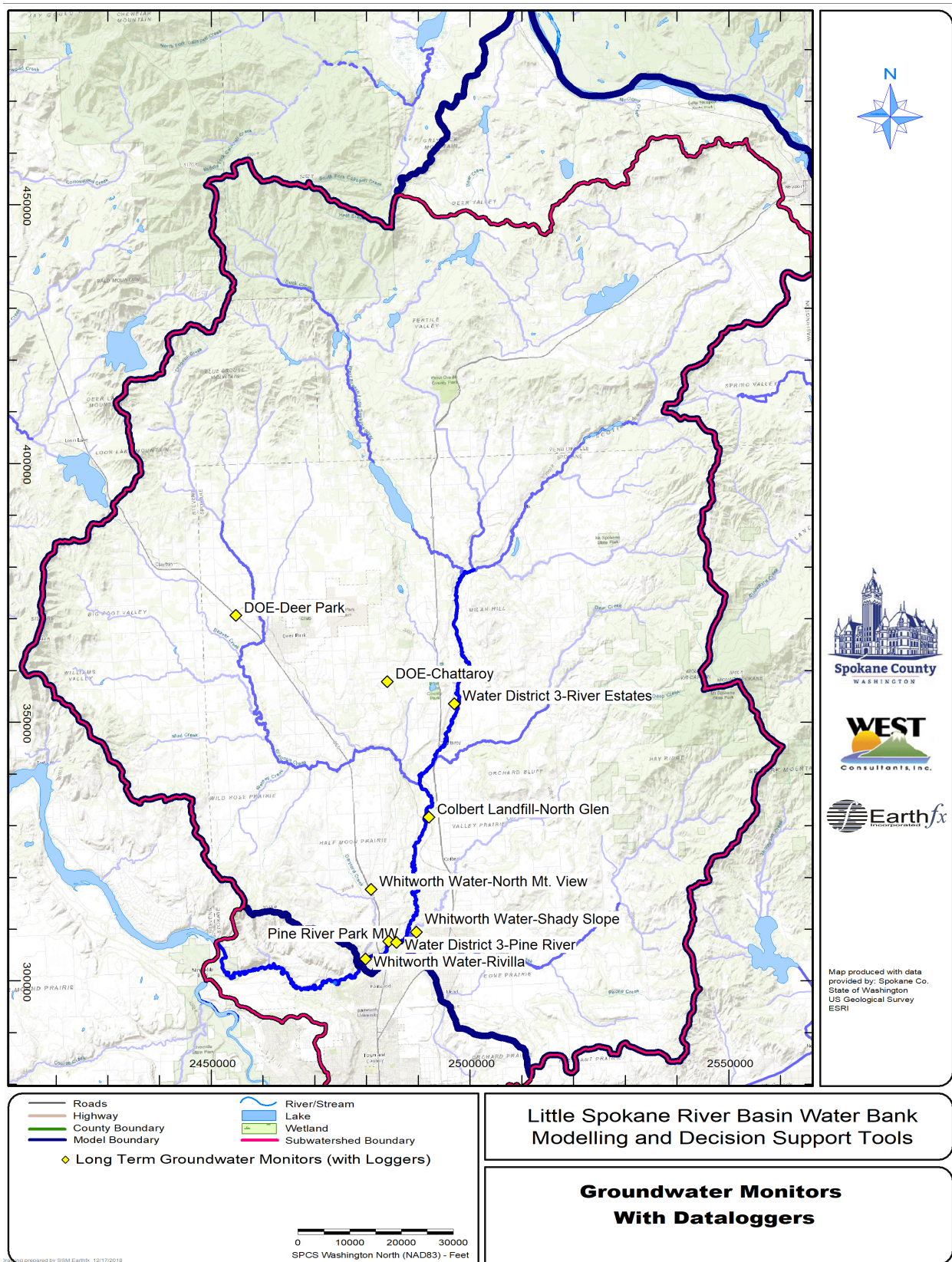


Figure 3.34: Groundwater monitors with dataloggers.

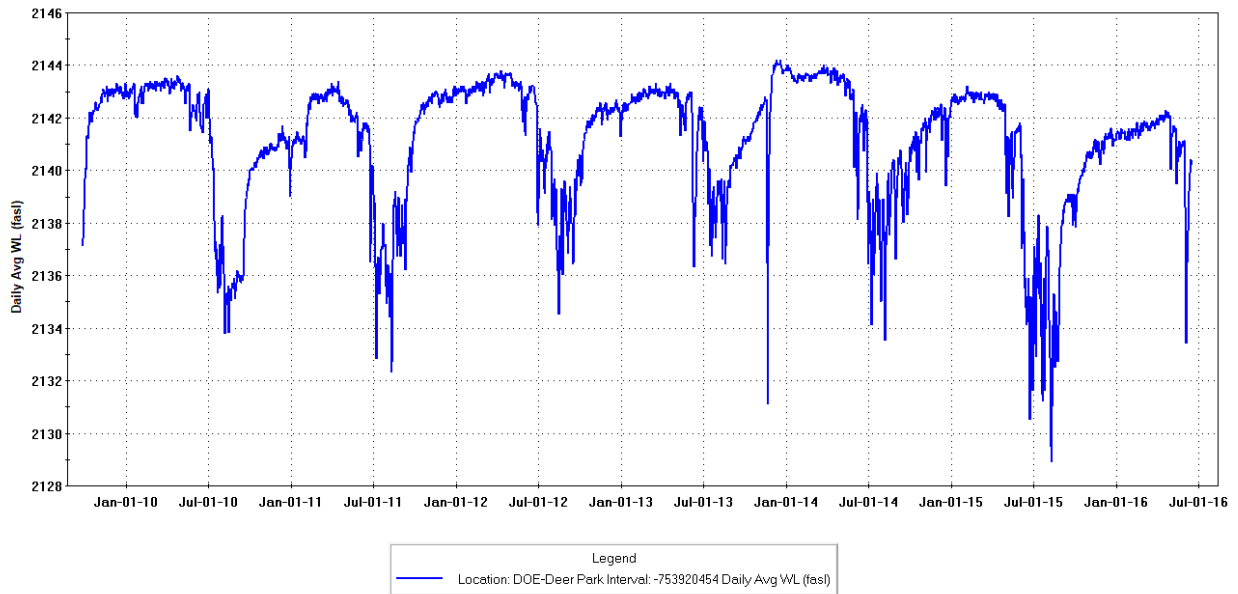


Figure 3.35: Groundwater elevation hydrograph for the DOE-Deer Park Grand Ronde Basalt aquifer well.

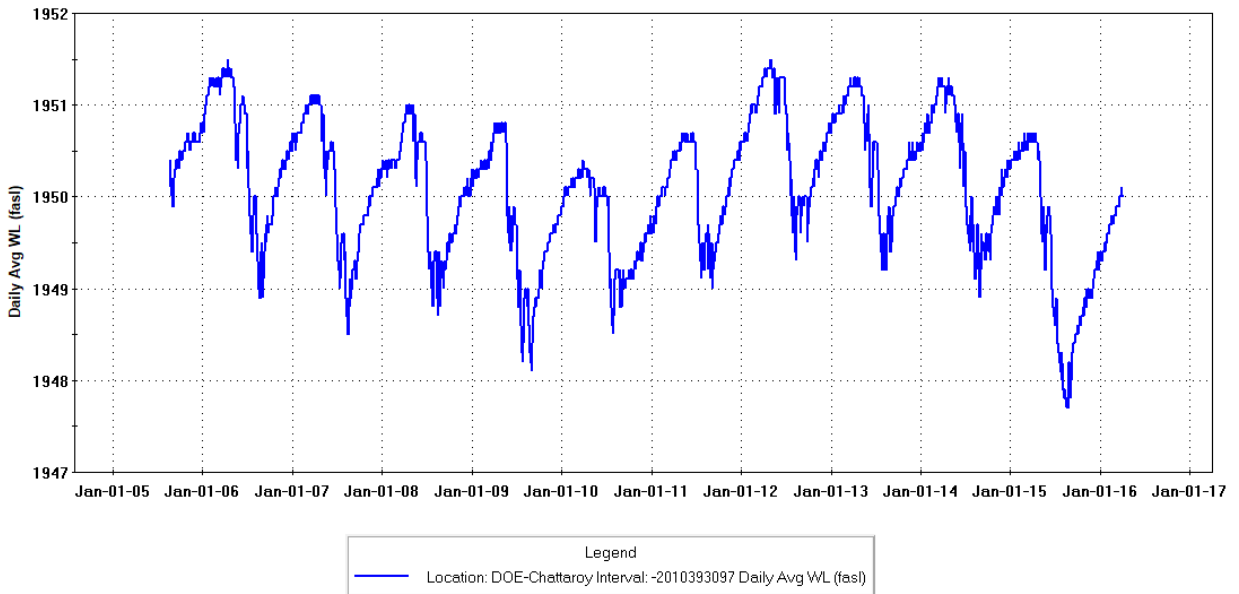


Figure 3.36: Groundwater elevation hydrograph for the DOE-Chattaroy bedrock aquifer well.

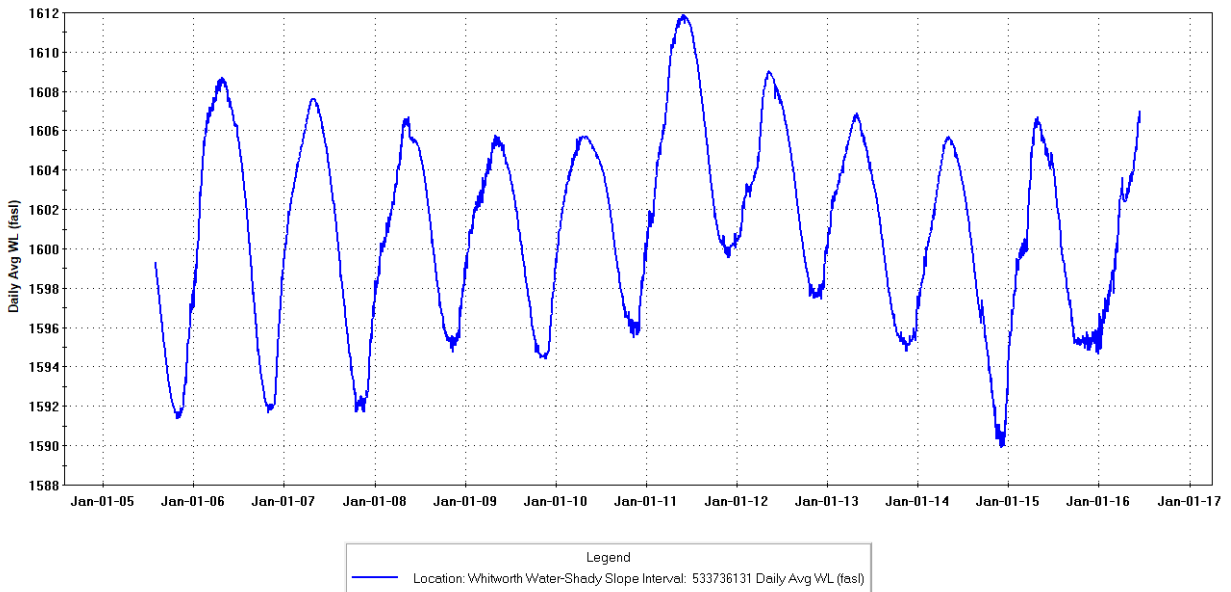


Figure 3.37: Groundwater elevation hydrograph for the Whitworth Water–Shady Slope Lower Aquifer well.

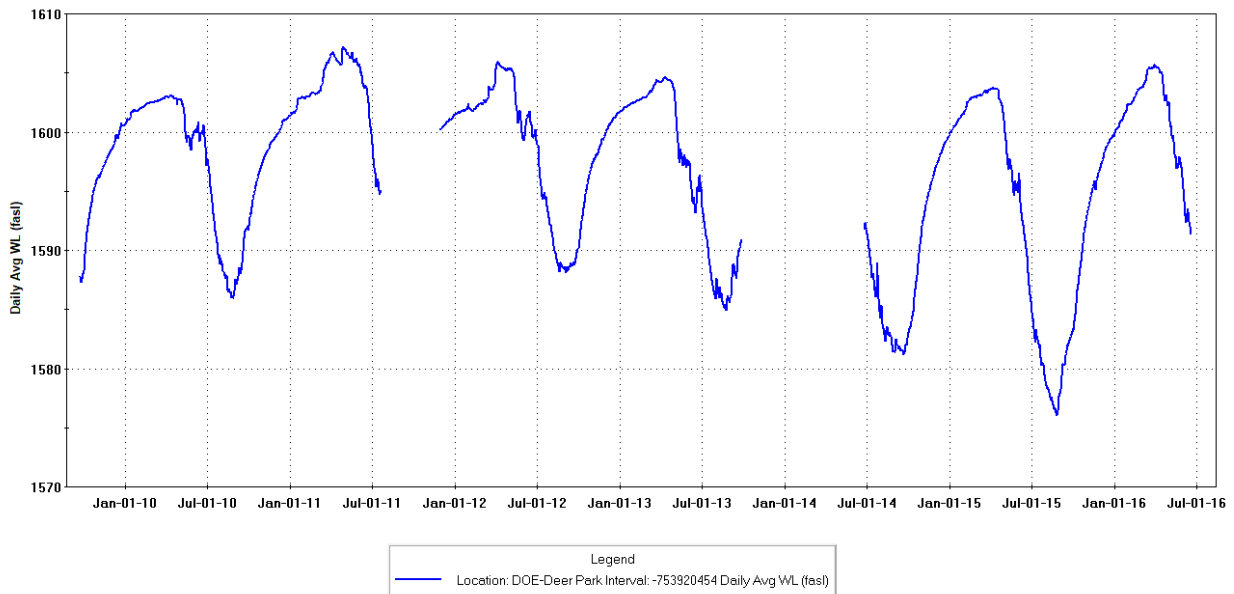


Figure 3.38: Groundwater elevation hydrograph at SCWD#3 Pine River.

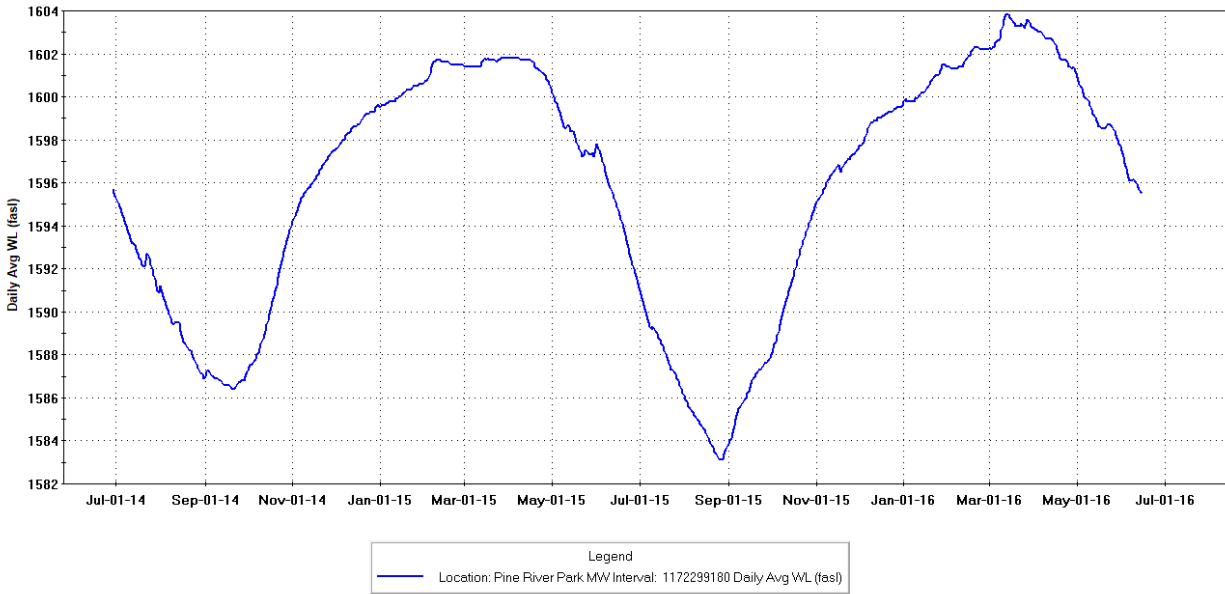


Figure 3.39: Groundwater elevation hydrograph at Pine River Park.

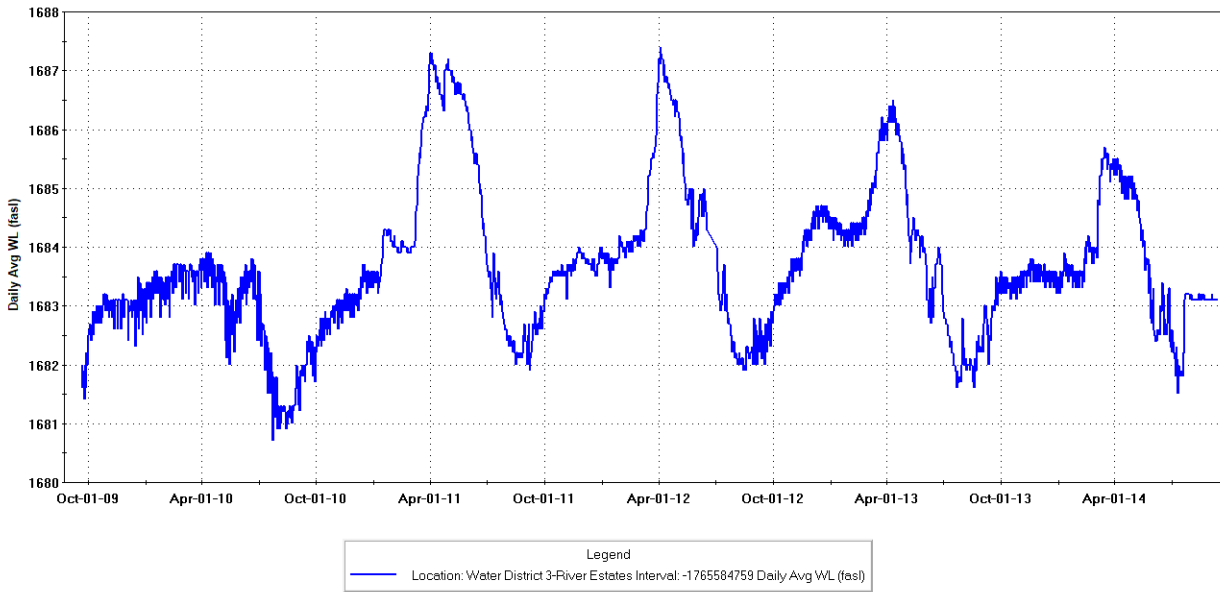


Figure 3.40: Groundwater elevation hydrograph for the SCWD#3 River Estates Upper Aquifer well.



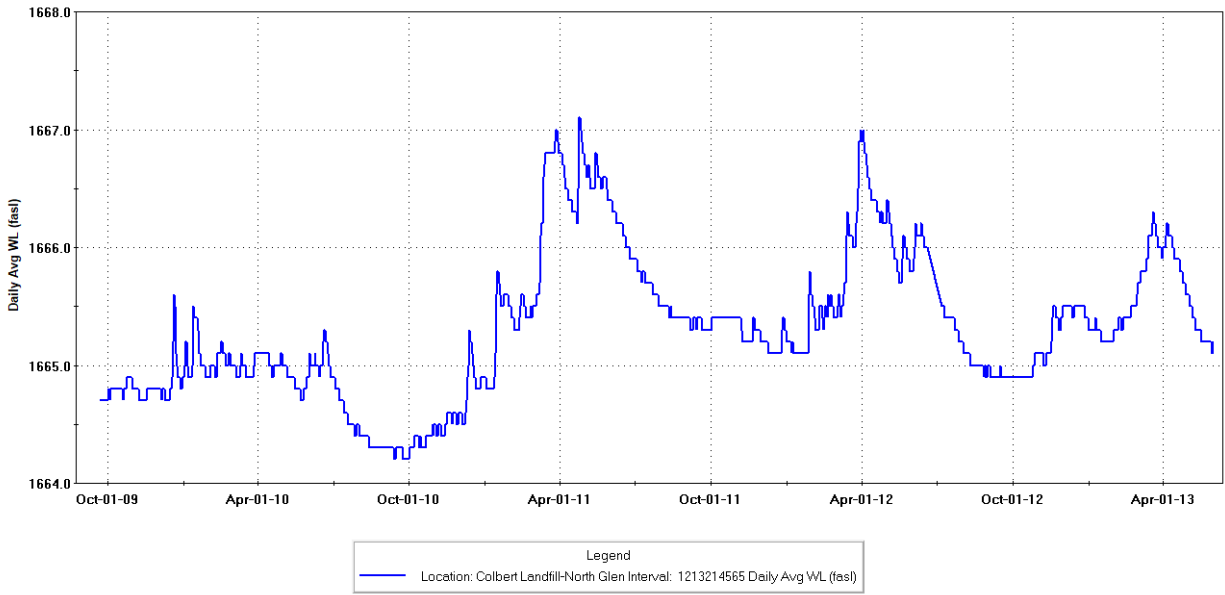


Figure 3.41: Groundwater elevation hydrograph at Colbert Landfill.

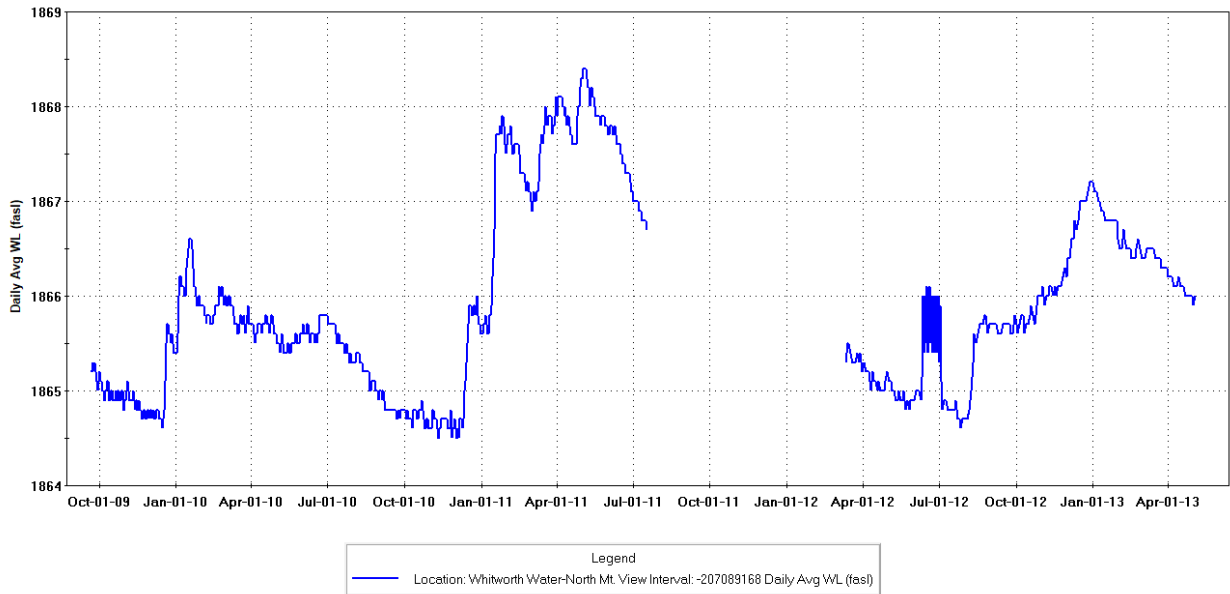


Figure 3.42: Groundwater elevation hydrograph at Whitworth Water – North Mt. View.

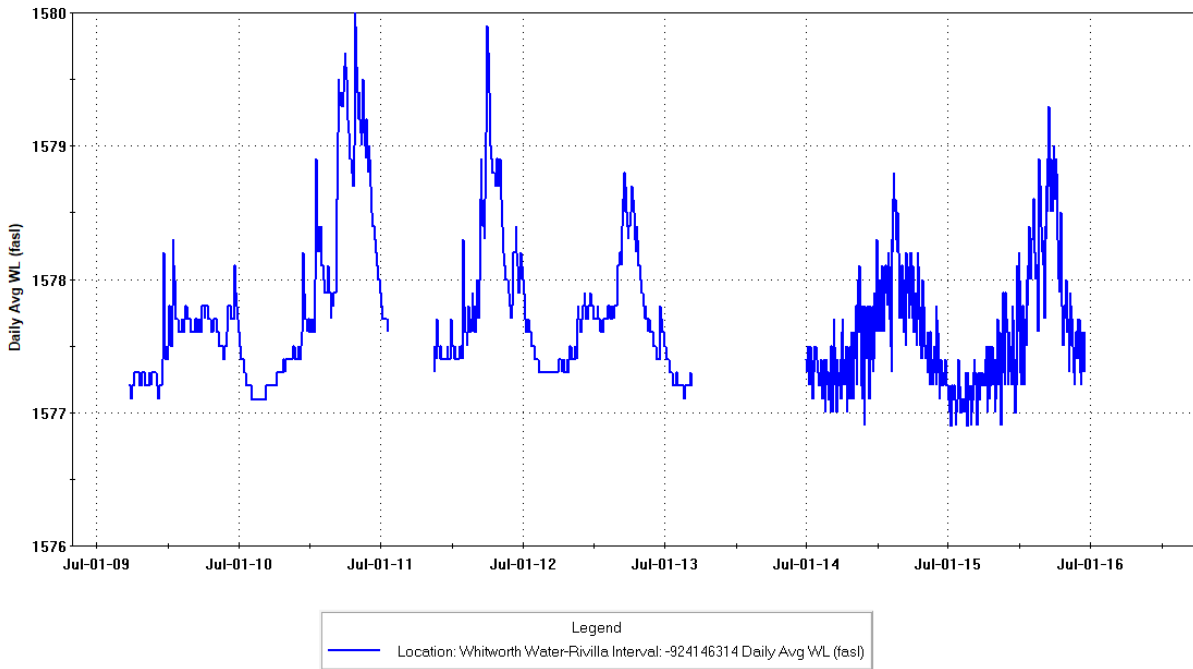


Figure 3.43: Groundwater elevation hydrograph for Whitworth Water – Rivilla.