

Figure 3.21: Geologic cross section C-C'.

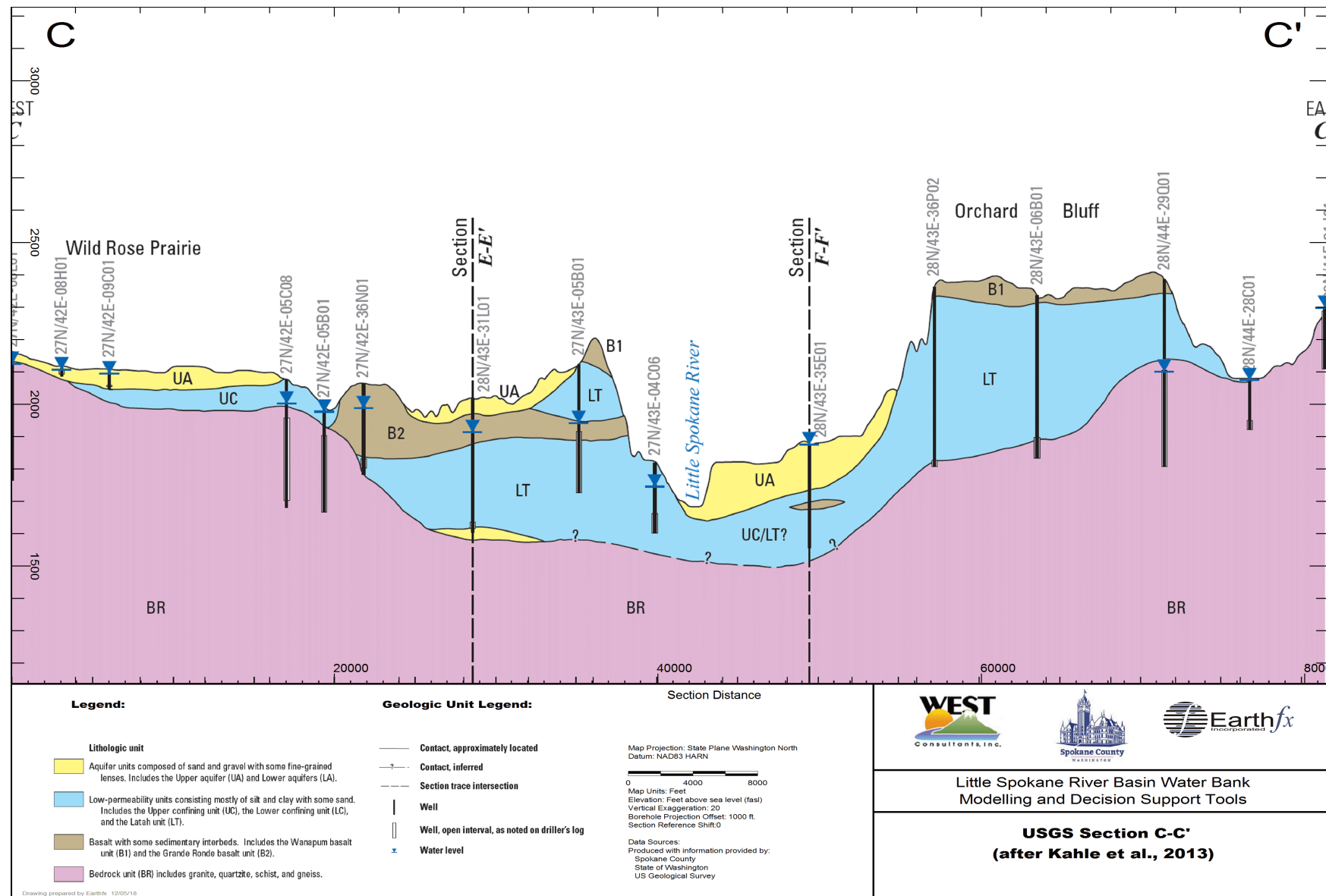


Figure 3.22: Geologic cross section C-C' from Kahle et al. (2013).

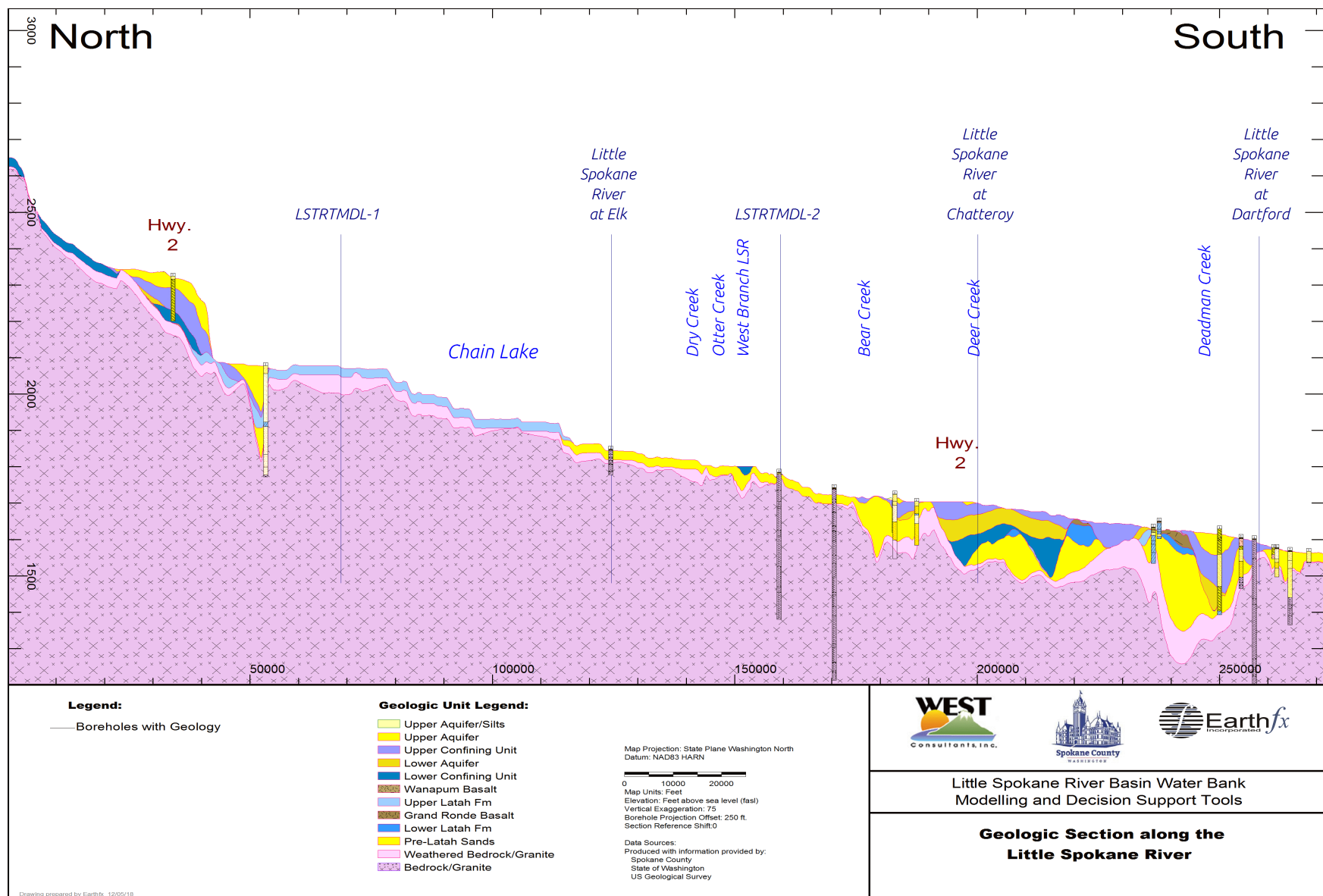


Figure 3.23: Geologic section along the main branch of the Little Spokane River.

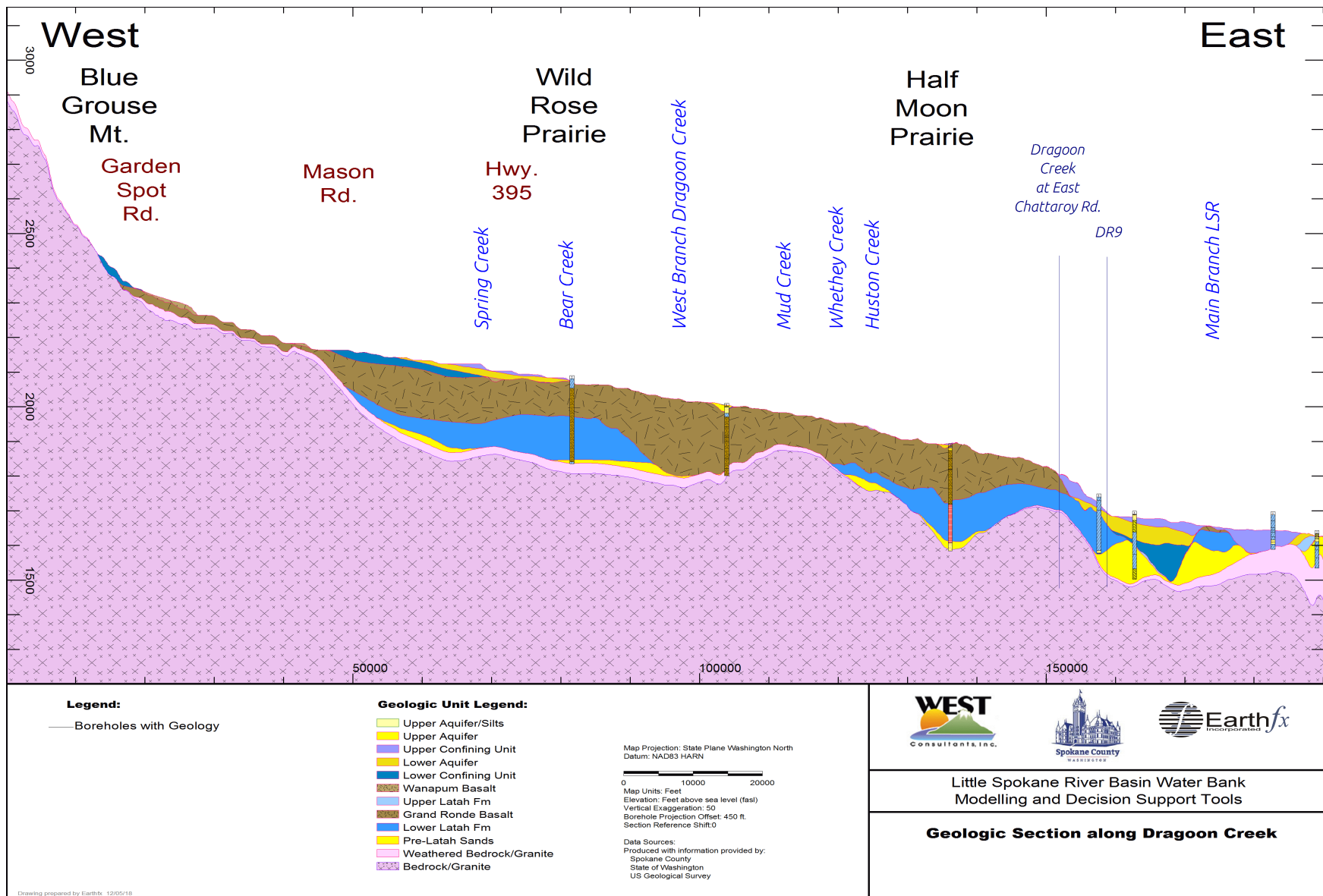


Figure 3.24: Geologic section along Dregon Creek.



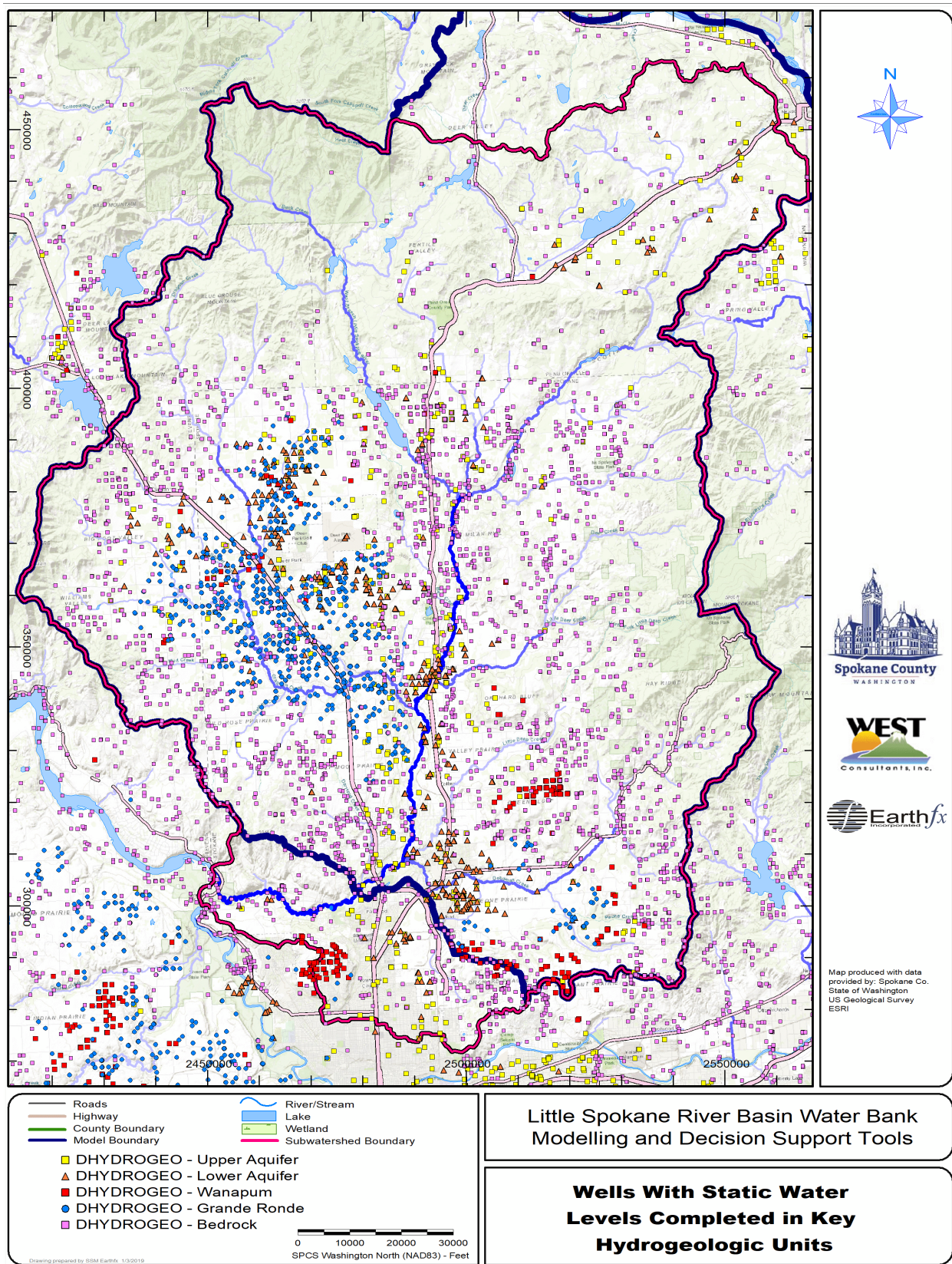


Figure 3.25: Wells with static water levels completed in key hydrogeologic units.



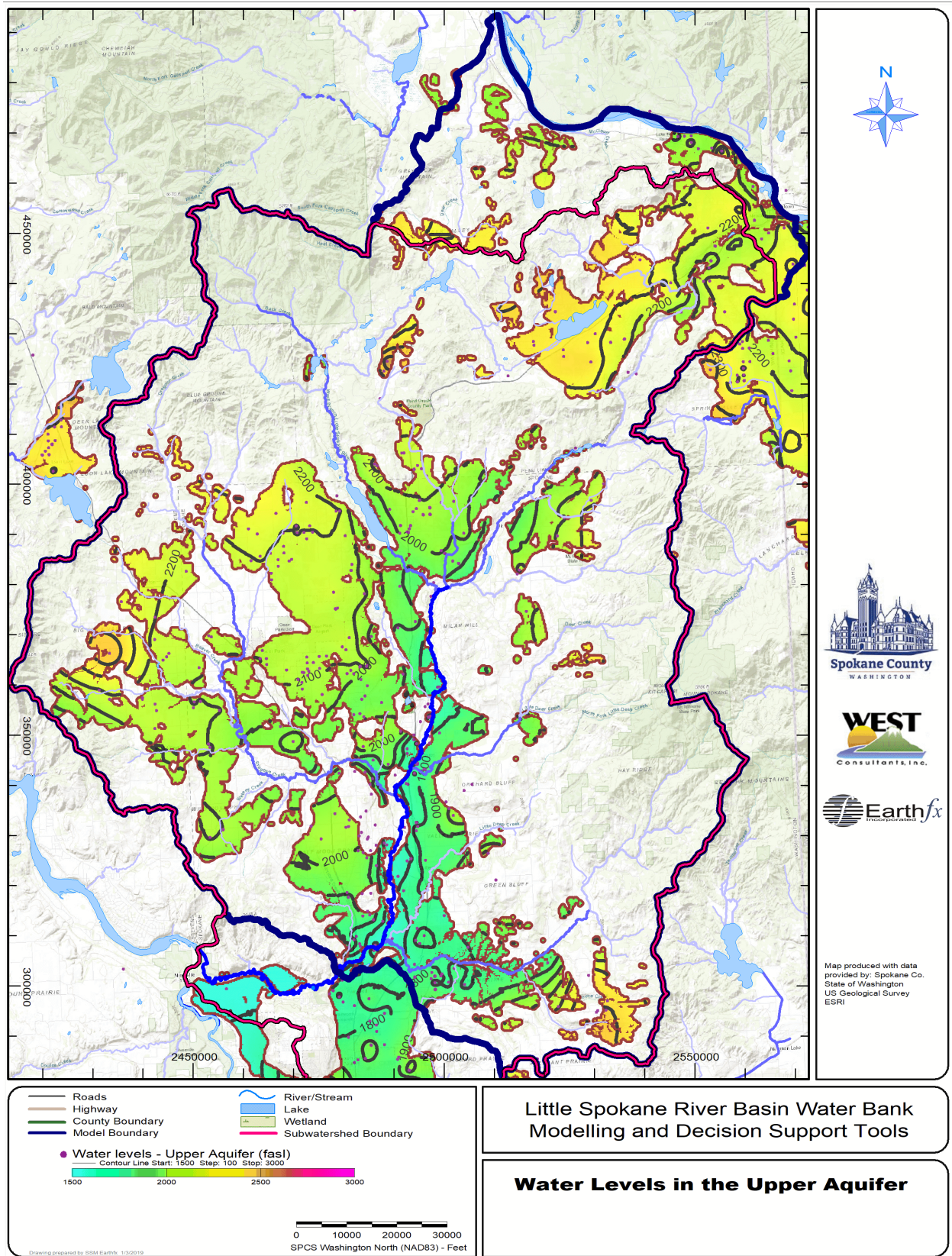


Figure 3.26: Interpolated static water levels in the Upper Aquifer.



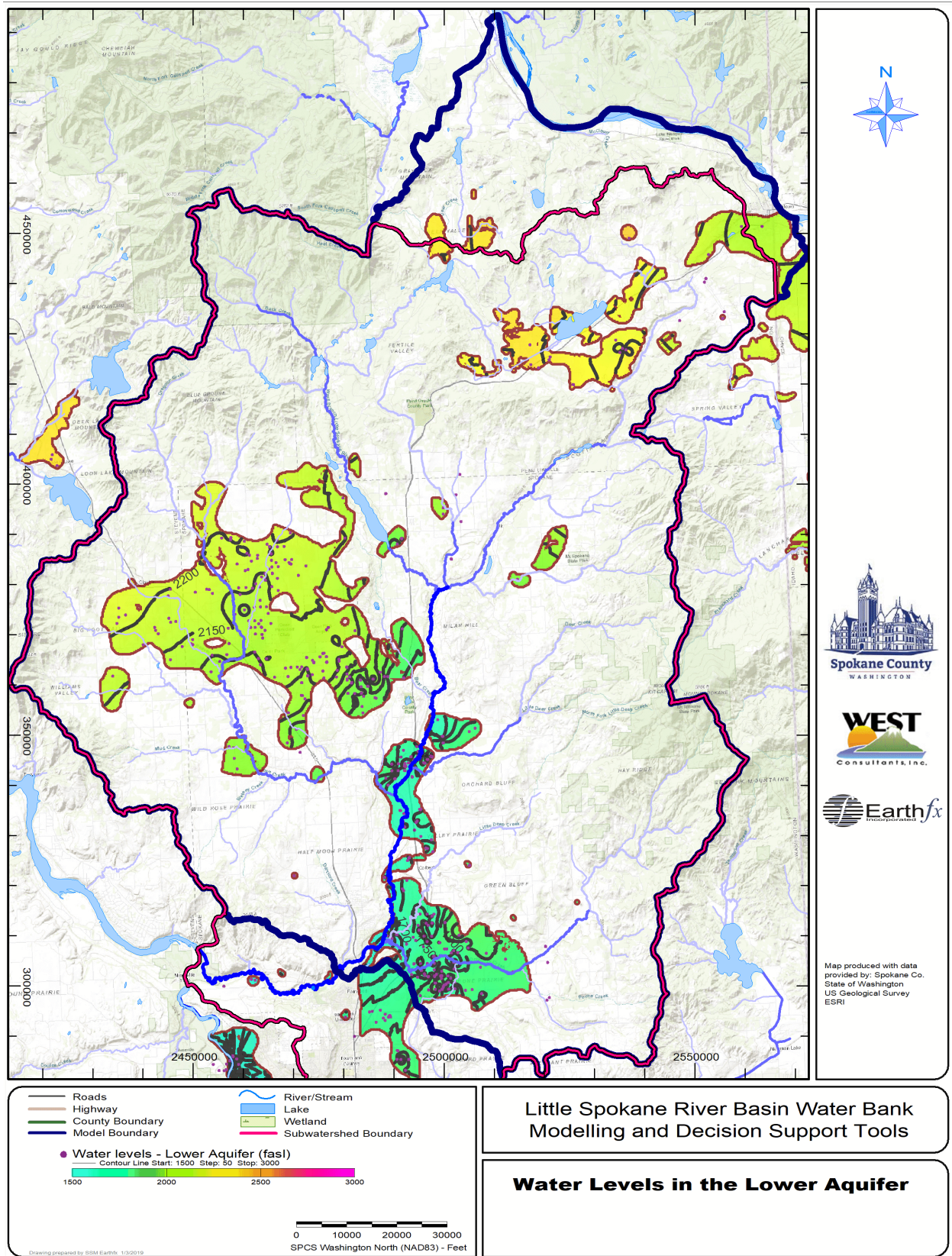


Figure 3.27: Interpolated static water levels in the Lower Aquifers.



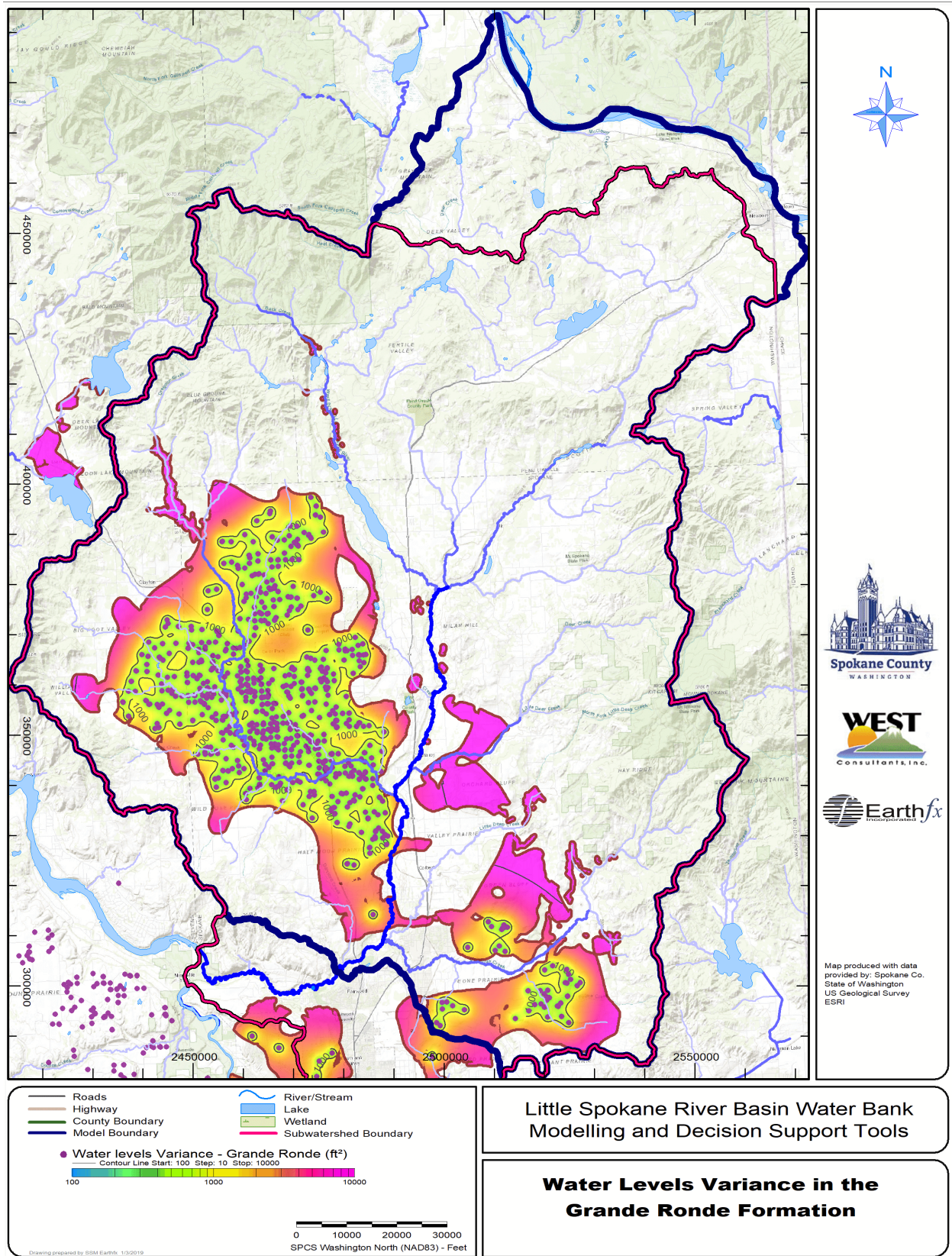


Figure 3.28: Interpolated static water levels in the Grande Ronde Basalt aquifer.



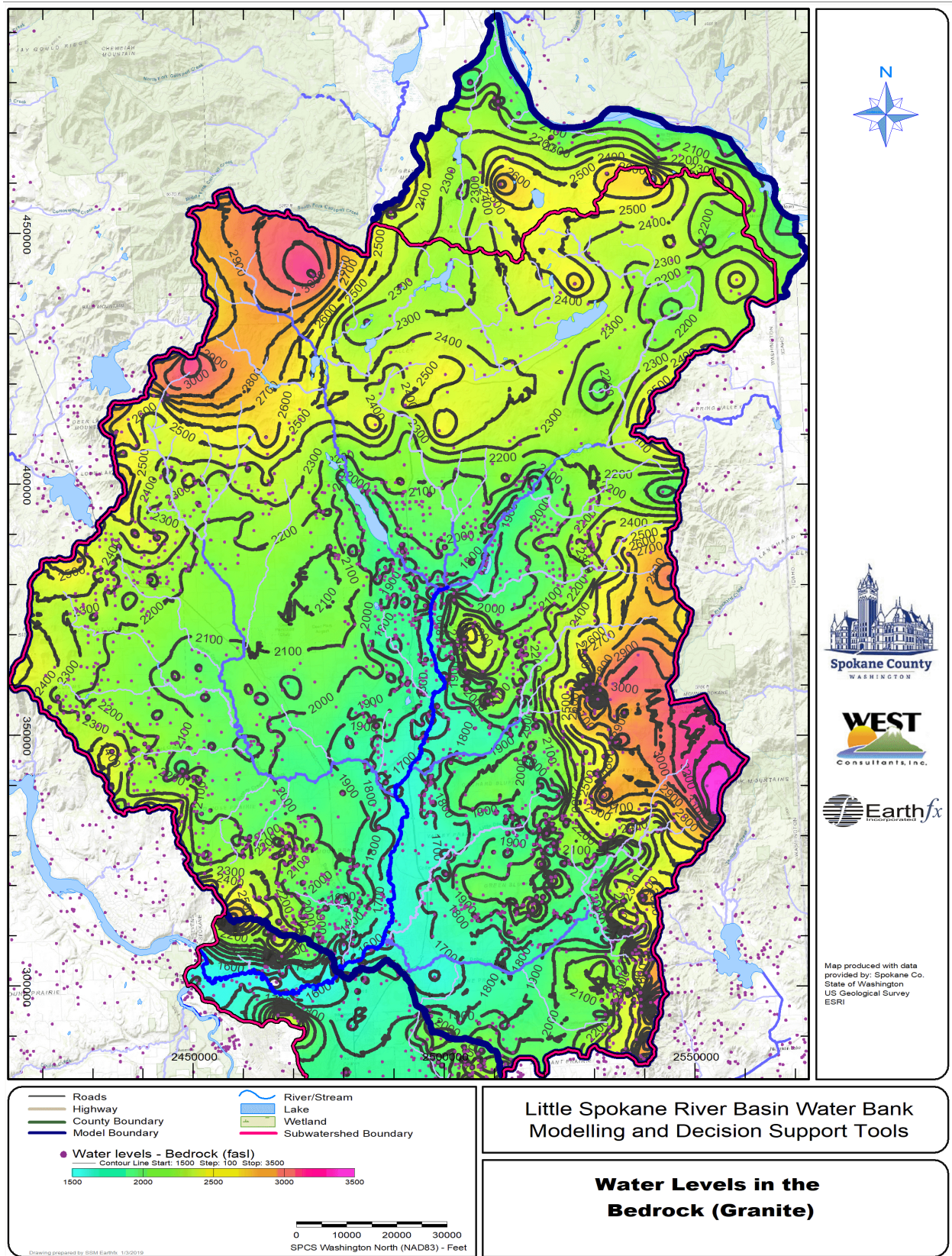


Figure 3.29: Interpolated static water levels in the bedrock aquifer.