

Document Path: P:\Portland\518-Spokane County\001-W Plains Hydro\Project_GIS\Project_mxd\Final\Base_Map_85x11.mxd

Figure 14. Locations of selected wells in Indian Prairie Area.

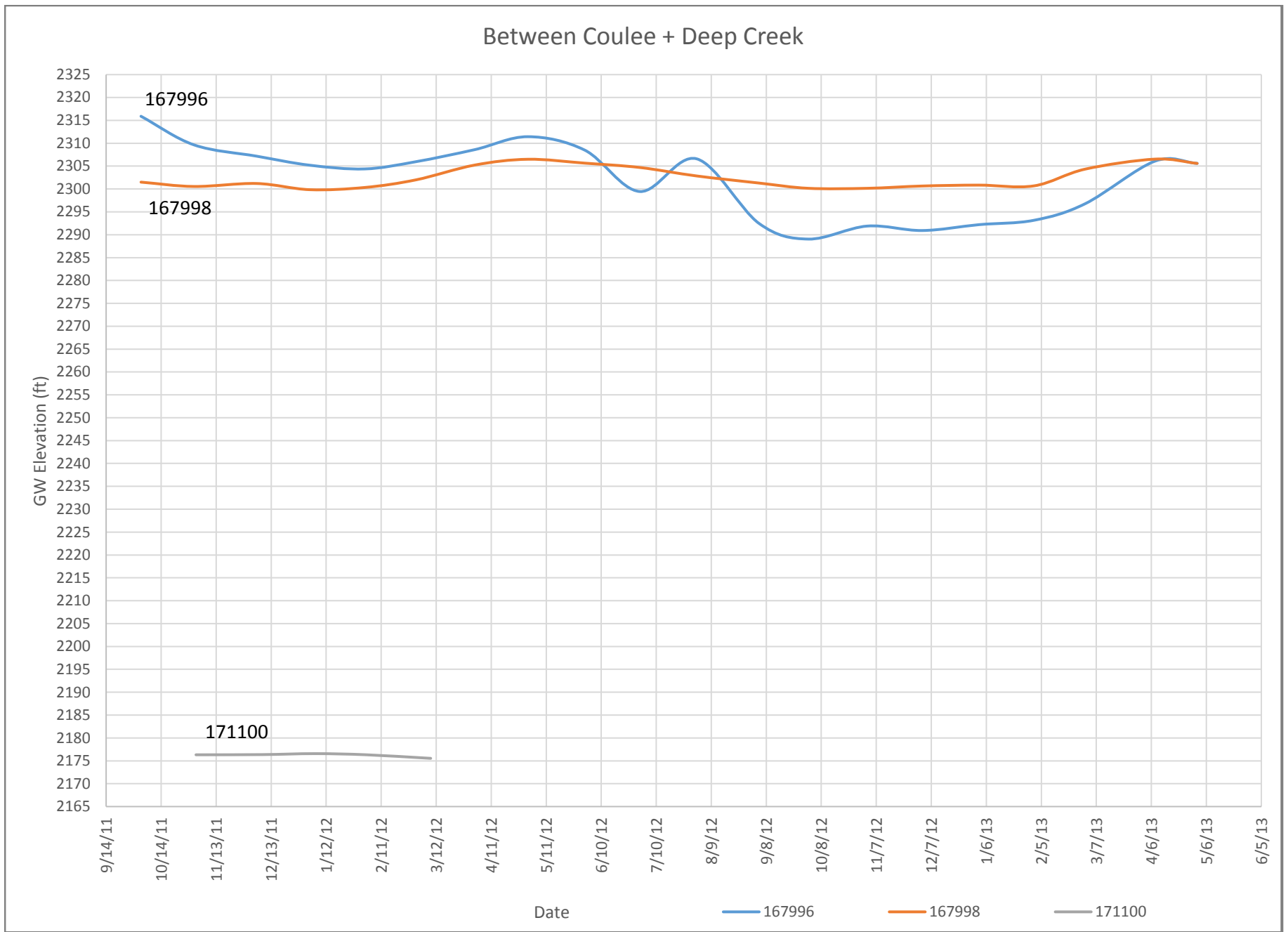
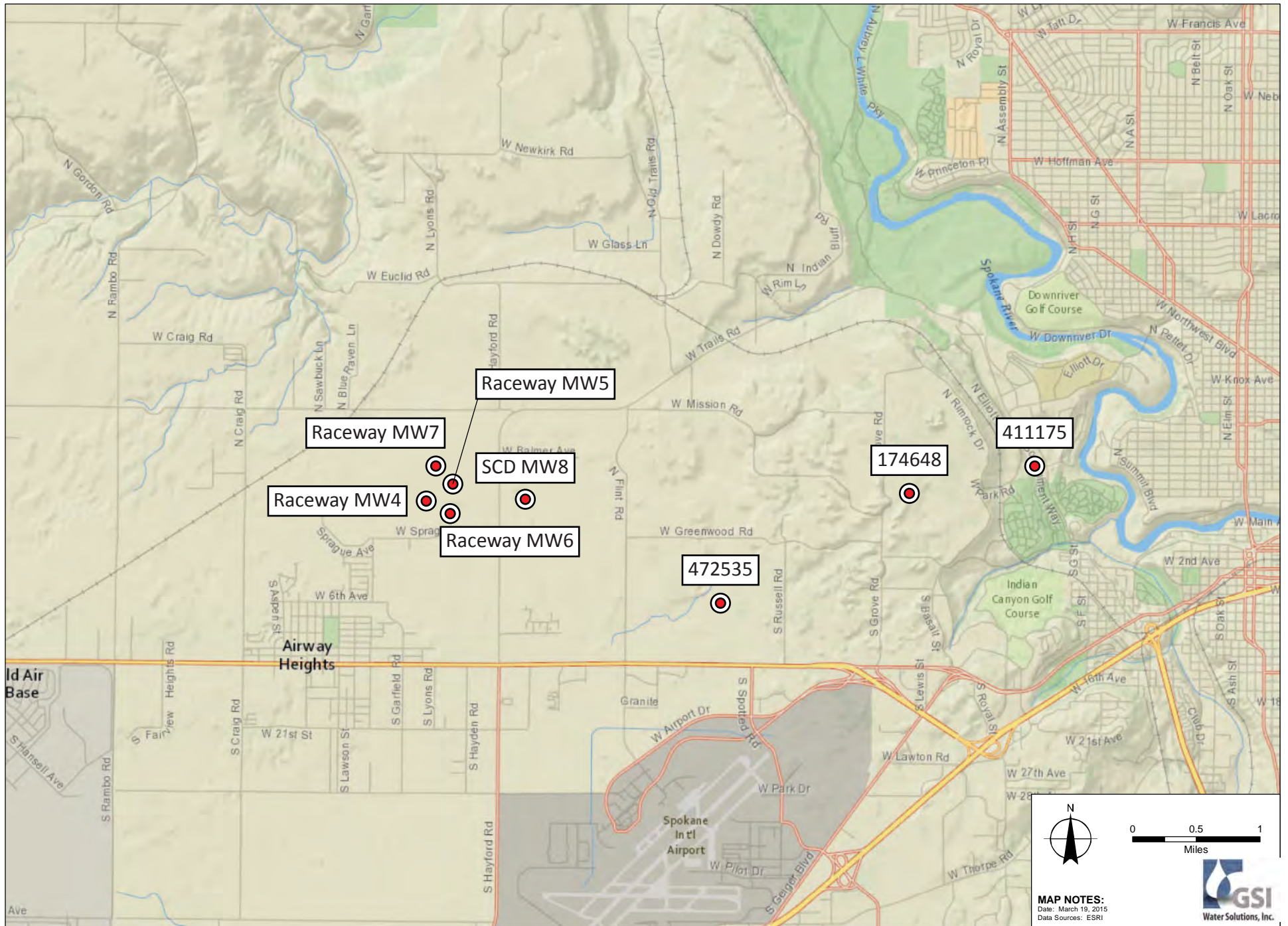


Figure 15. Hydrographs of selected wells in the Indian Prairie Area.



Document Path: P:\Portland\518-Spokane County\001-W Plains Hydro\Project_GIS\Project_mxd\Final\Base_Map_85x11.mxd

Figure 16. Locations of selected wells south of Deep Creek and North of US-2.

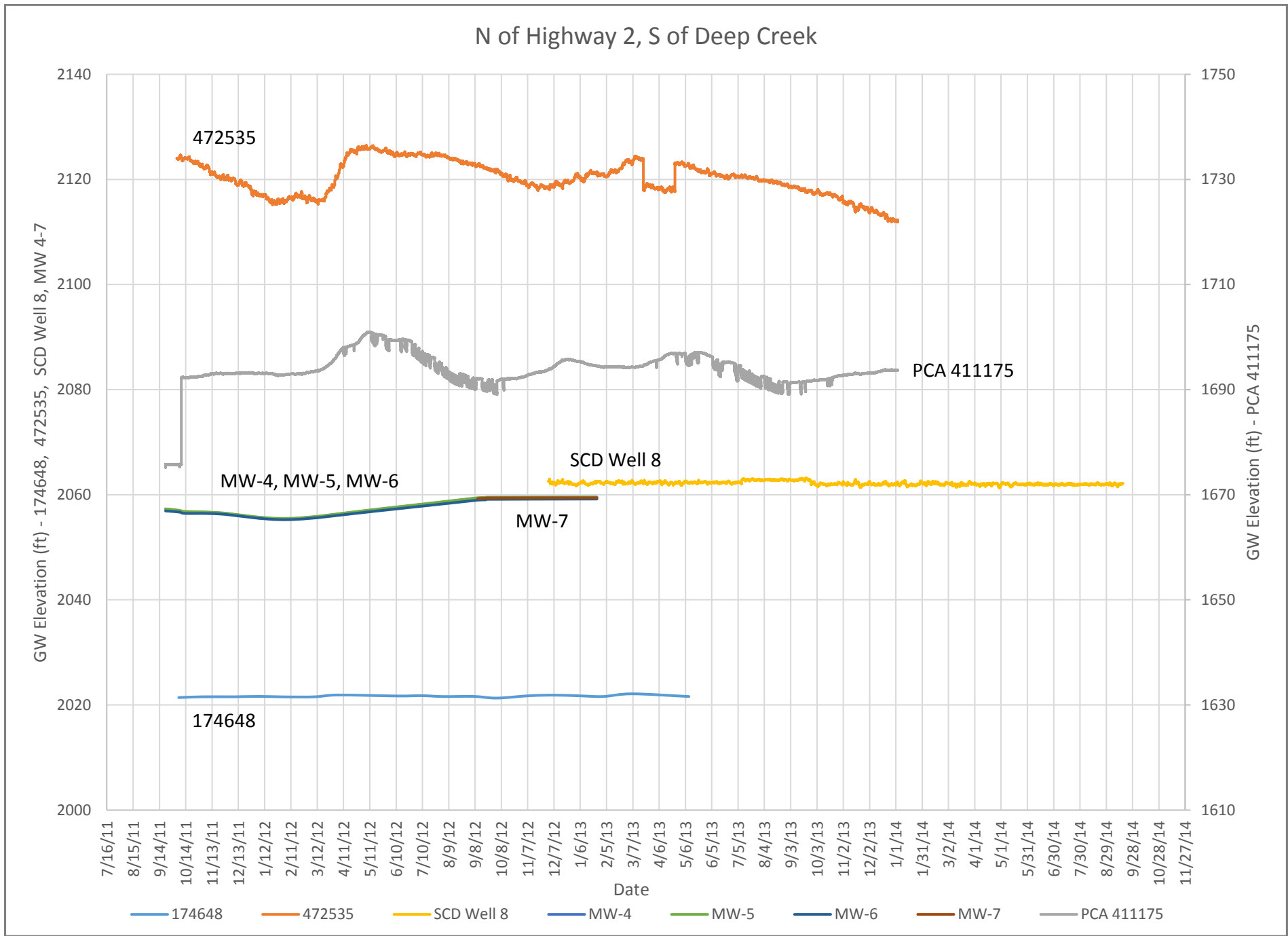
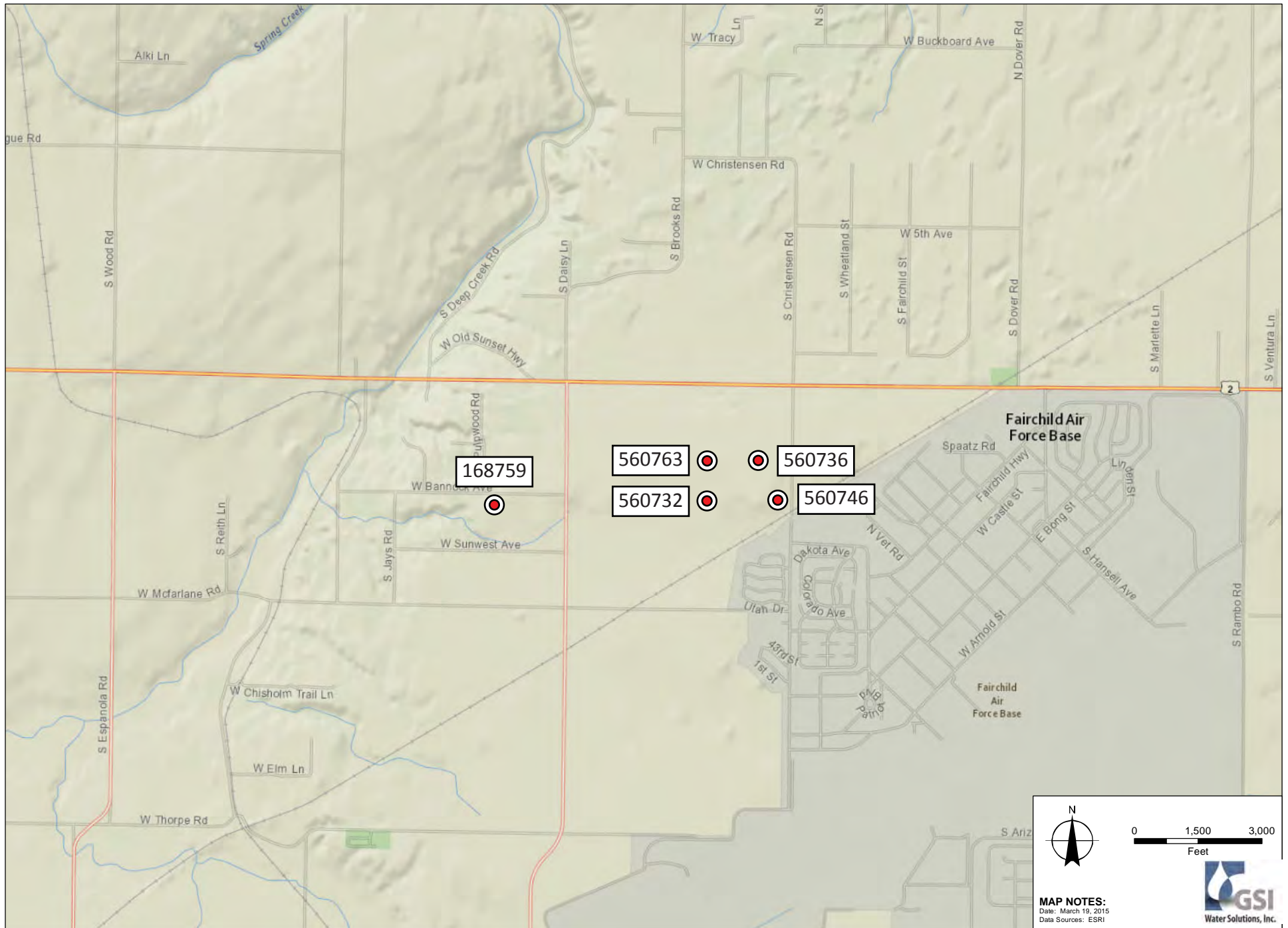


Figure 17. Hydrographs for selected wells in the area between Deep Creek and US-2.



Document Path: P:\Portland\518-Spokane County\001-W Plains Hydro\Project_GIS\Project_mxd\Final\Base_Map_85x11.mxd

Figure 18. Locations of selected wells west of Fairchild Air Force Base.

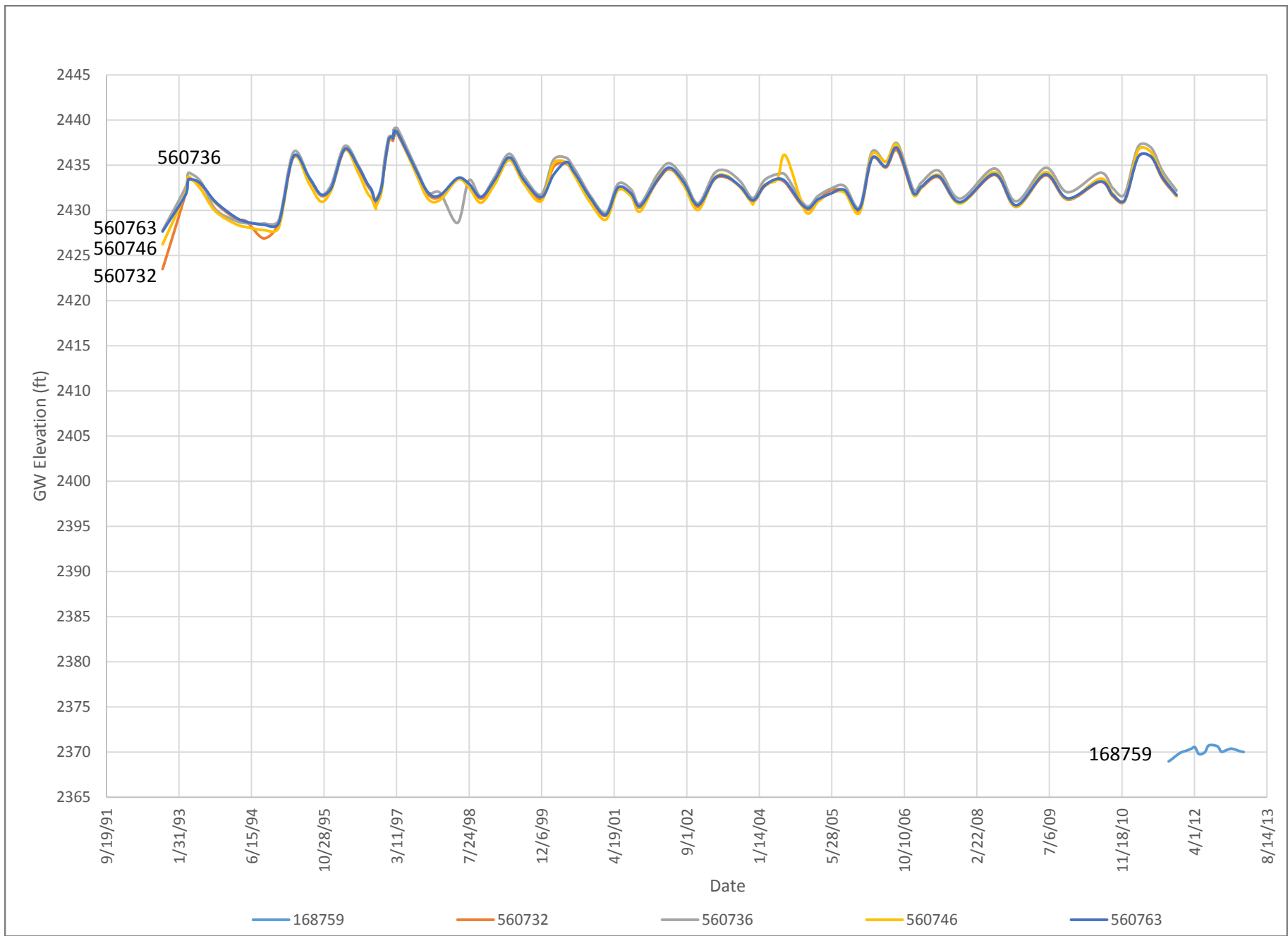


Figure 19. Hydrographs of selected wells west of Fairchild Air Force Base.

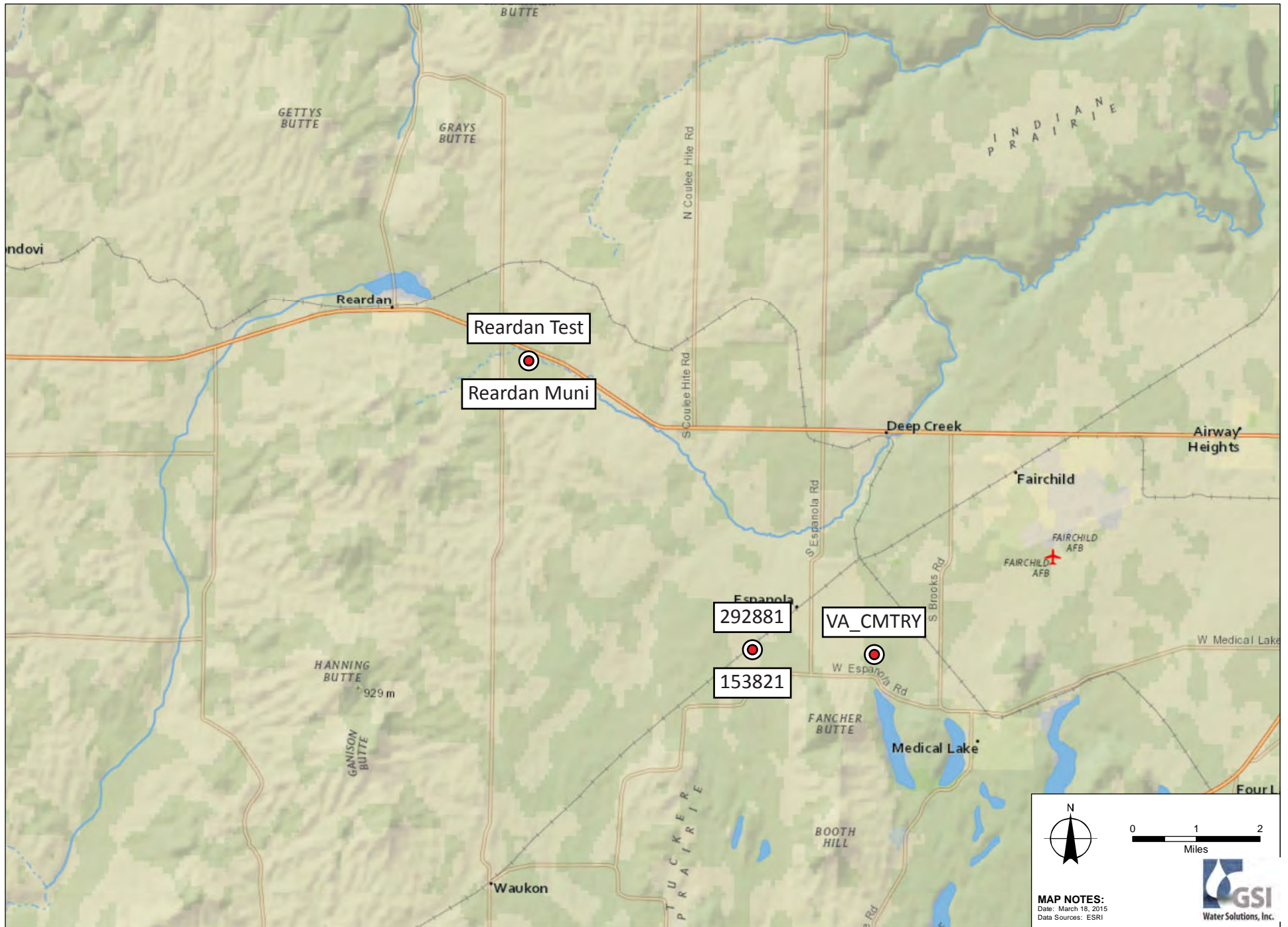


Figure 20. Locations of selected wells in the Western area.