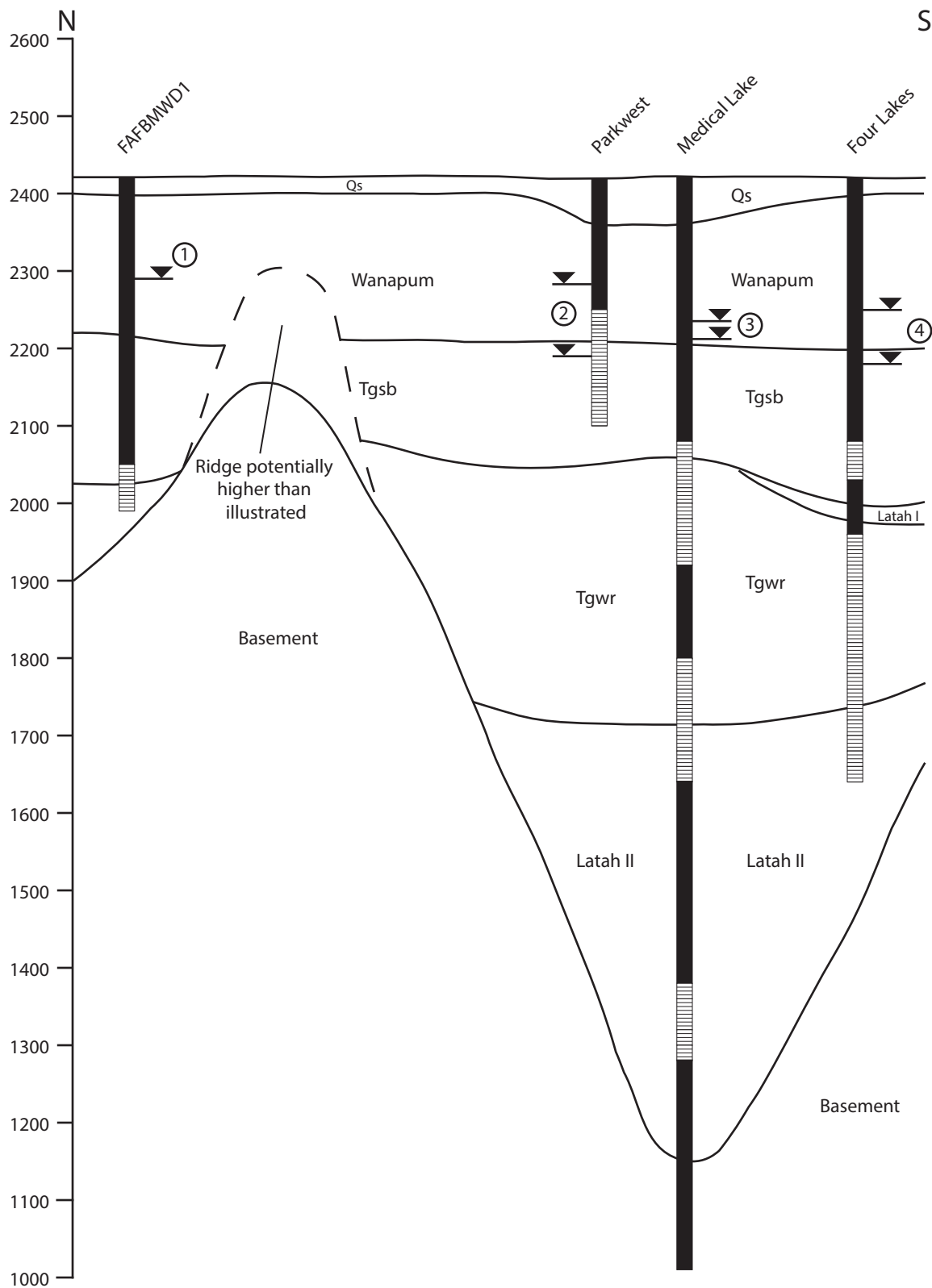


Figure 28. Hydrographs of selected deeper wells in the Craig Road Landfill area.



Qs = Quaternary sediments
 Wanapum = Wanapum Basalt
 Tgsb = Sentinel Bluffs Member, Grande Ronde Basalt
 Tgwr = Wapshilla Ridge Member, Grande Ronde Basalt
 Latah I = Latah Formation, unit I
 Latah II = Latah Formation, unit II

1 mile
 Cased Interval
 Open Interval

- ① Water level constant, 2010-2014
- ② Fluctuating water levels, 2010-2014
- ③ Fluctuating water levels, 2009-2014
- ④ Fluctuating water levels, 2009-2014



Figure 29. Diagrammatic geologic cross-section illustrating the potential influence of the Medical Lake - Airway Heights ridge separating the open interval in FAFBMWD1 from pumping center wells.

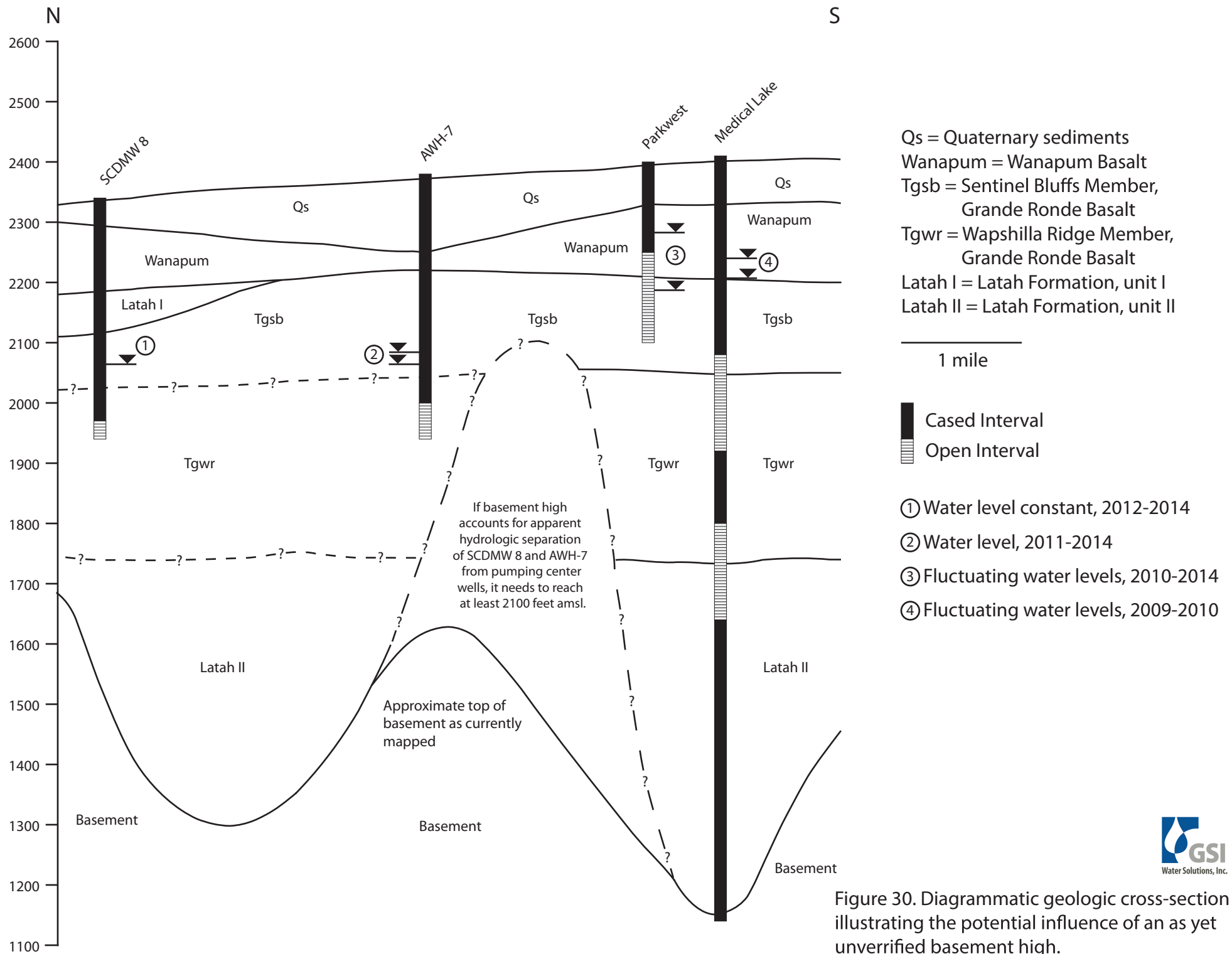


Figure 30. Diagrammatic geologic cross-section illustrating the potential influence of an as yet unverified basement high.

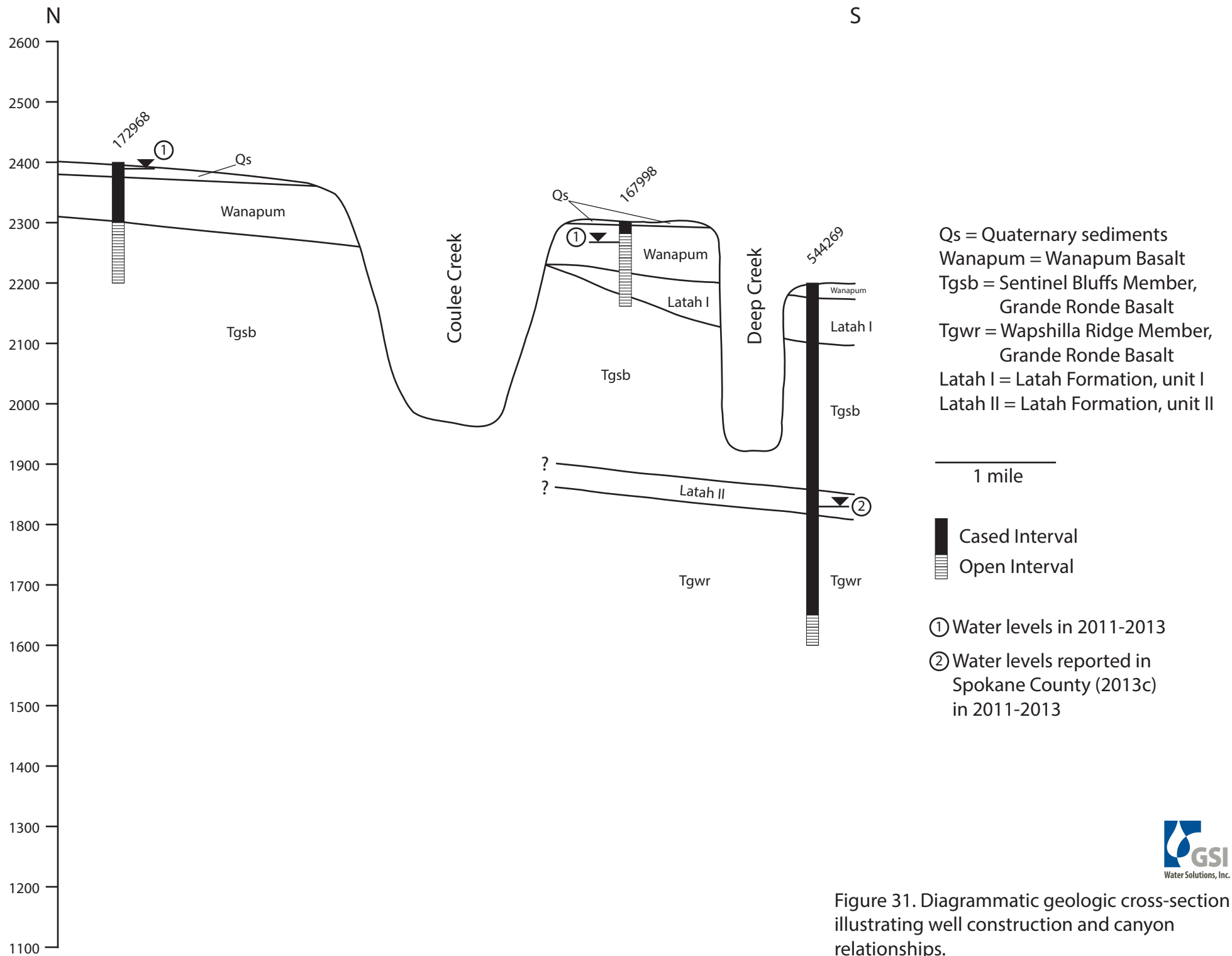


Figure 31. Diagrammatic geologic cross-section illustrating well construction and canyon relationships.

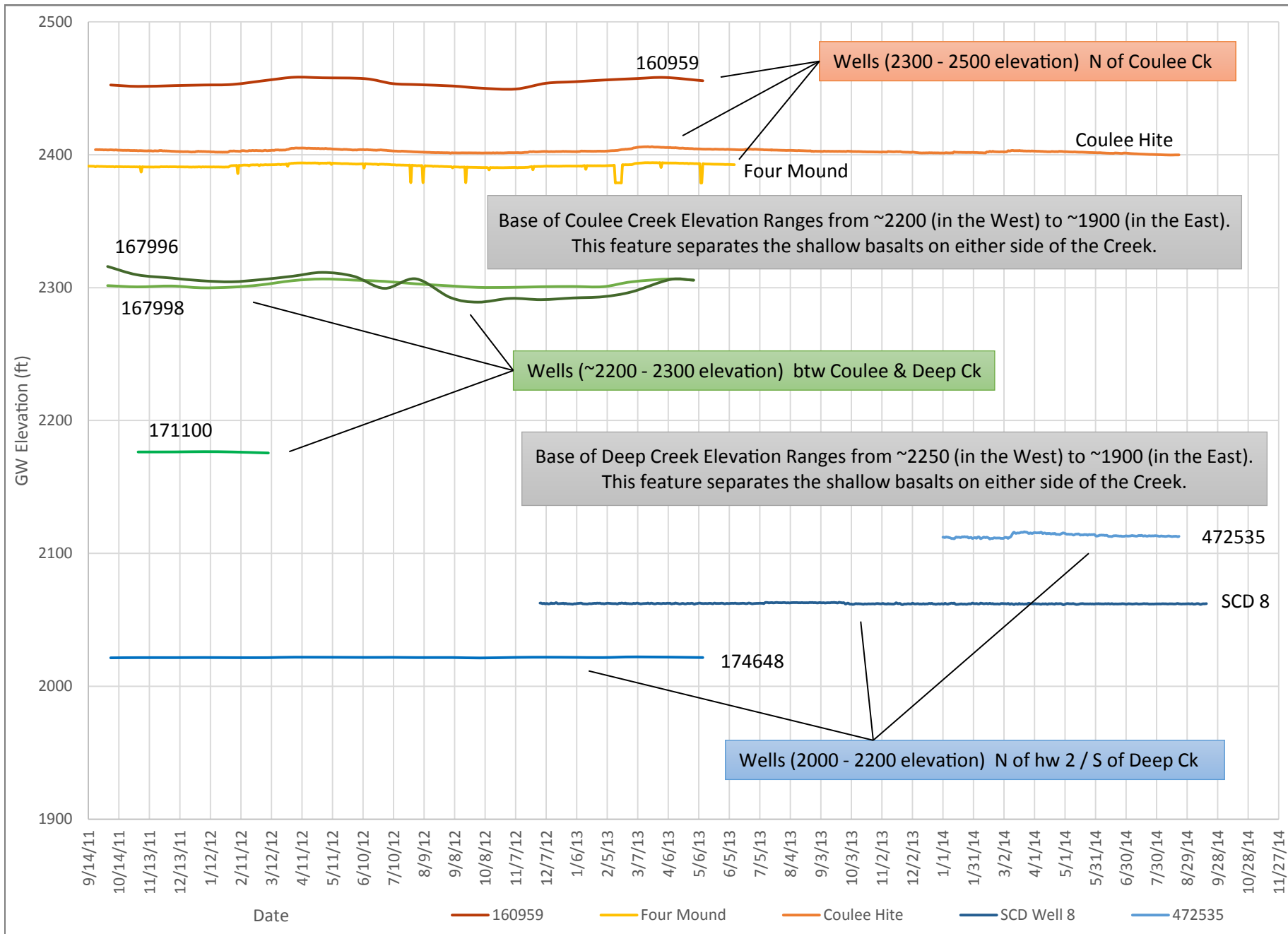


Figure 32. Hydrographs of either side of Deep Creek and Coulee Creek canyons.

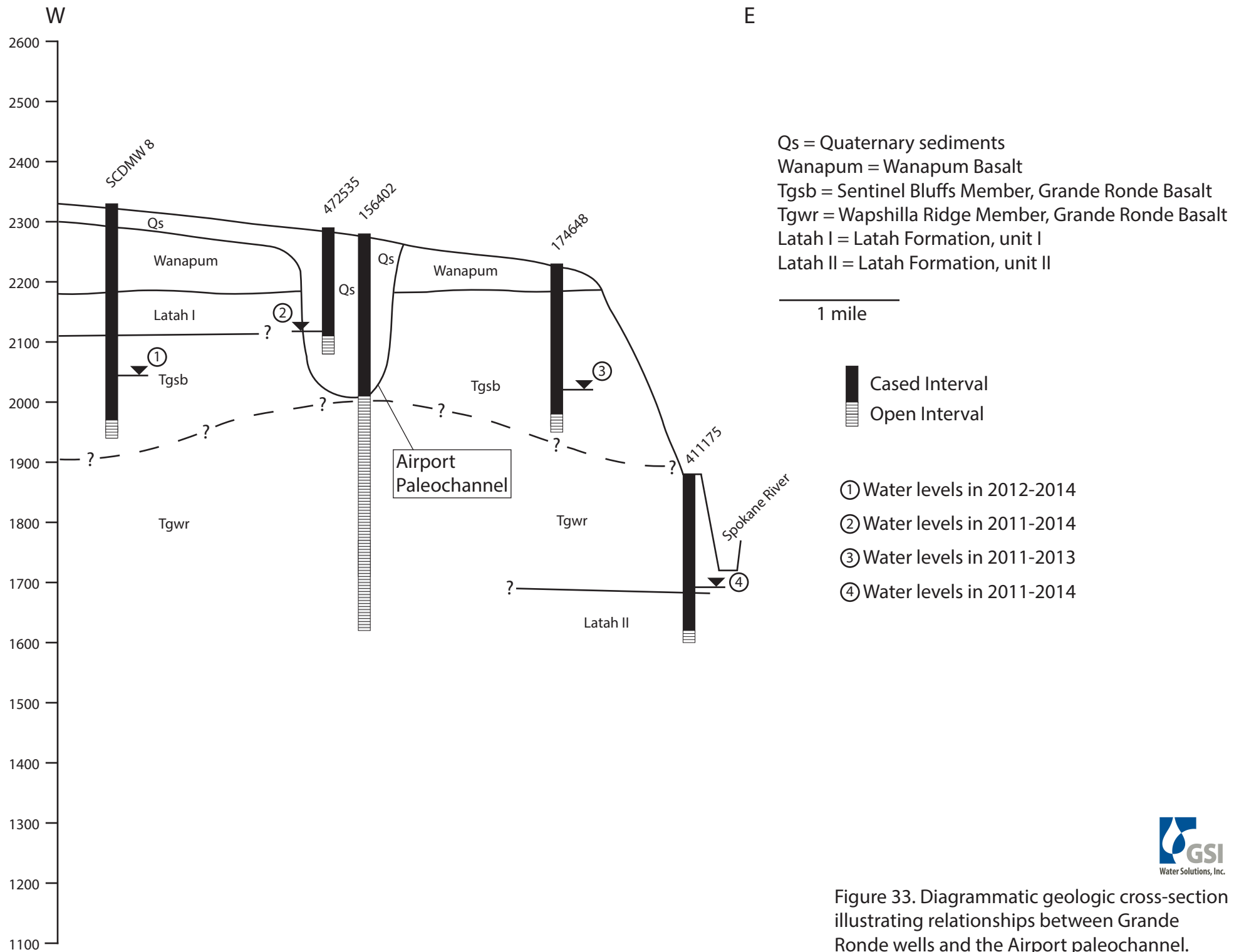
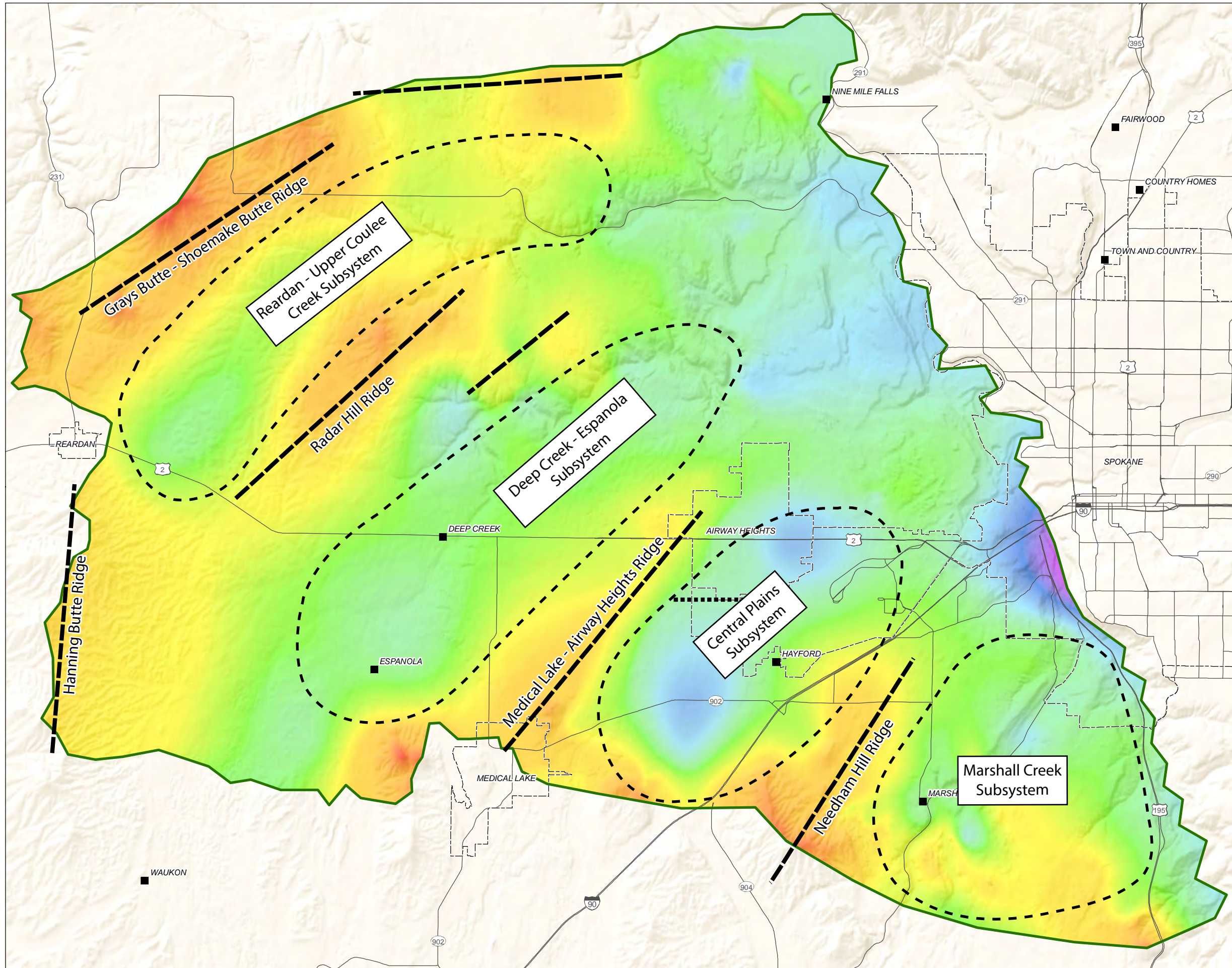


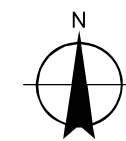
Figure 33. Diagrammatic geologic cross-section illustrating relationships between Grande Ronde wells and the Airport paleochannel.

FIGURE 34
Inferred groundwater subsystems
within the Project Area.
 Spokane County



LEGEND

- Study Area Boundary
 - Cities
 - Towns
 - Highways and Major Roads
 - Basement Ridges Suggested by Outcrop and Well Data
 - Basement Ridges Inferred from Hydrograph Differences
- Top of Basement Elevation**
- 2950 feet
 - 650 feet



MAP NOTES:
 Date: March 17, 2015
 Data Sources: USGS, ESRI

