

Figure 9.26: Average of spot flow observations versus long-term average simulated streamflow at ungauged tributaries.

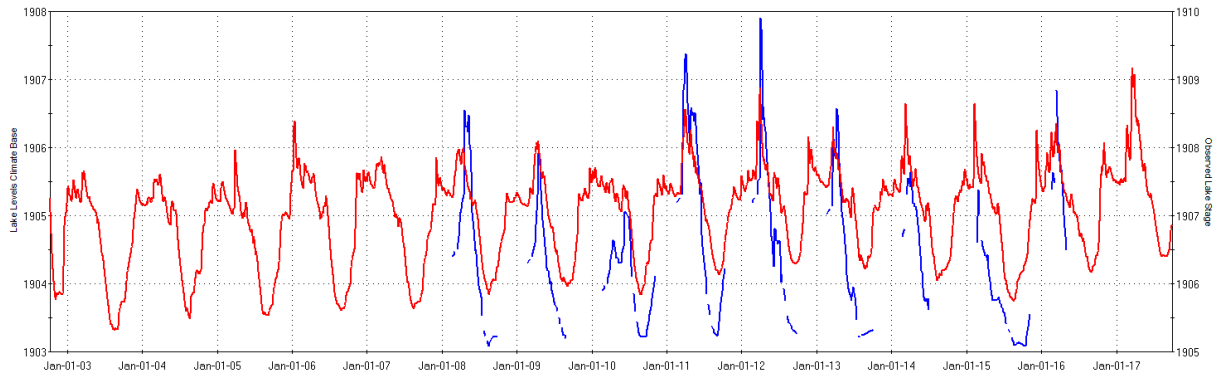


Figure 9.27: Observed (blue) and simulated (red) stage at Eloika Lake (WY2003-WY2017), in feet.

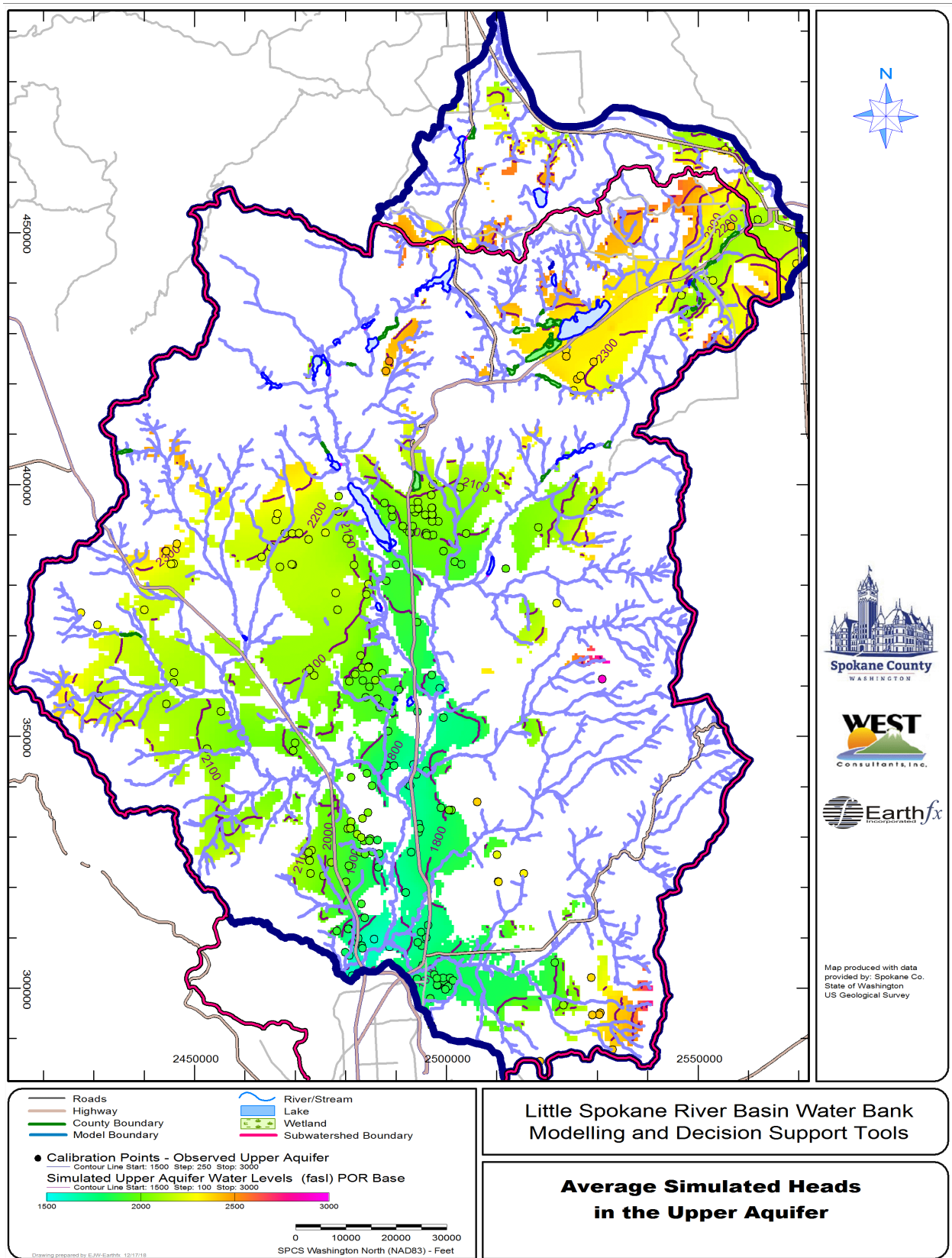


Figure 9.28: Average simulated head in the Upper Aquifer (WY2003-WY2017) and observed groundwater levels.

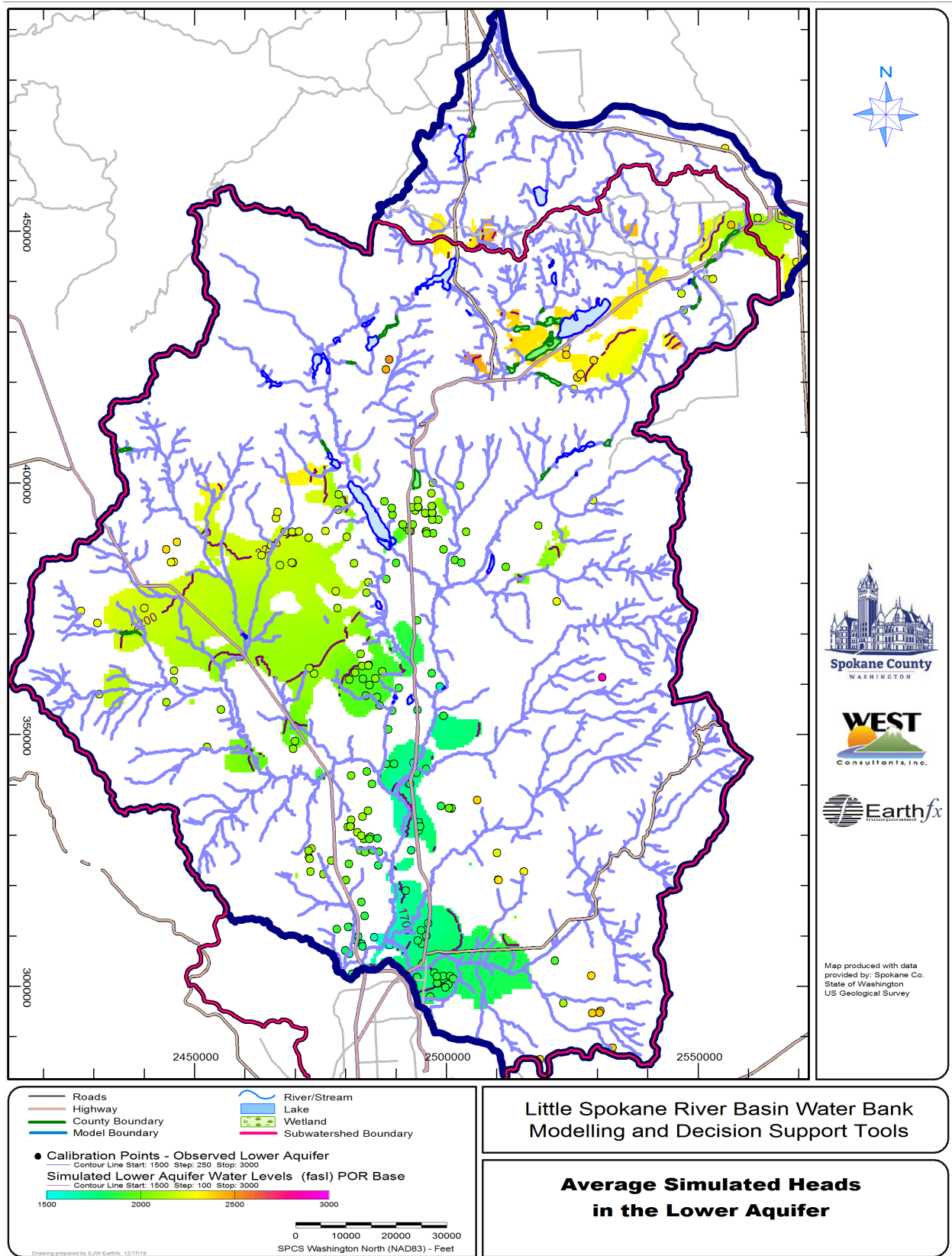


Figure 9.29: Average simulated head in the Lower Aquifer (WY2003-WY2017) and observed groundwater levels.

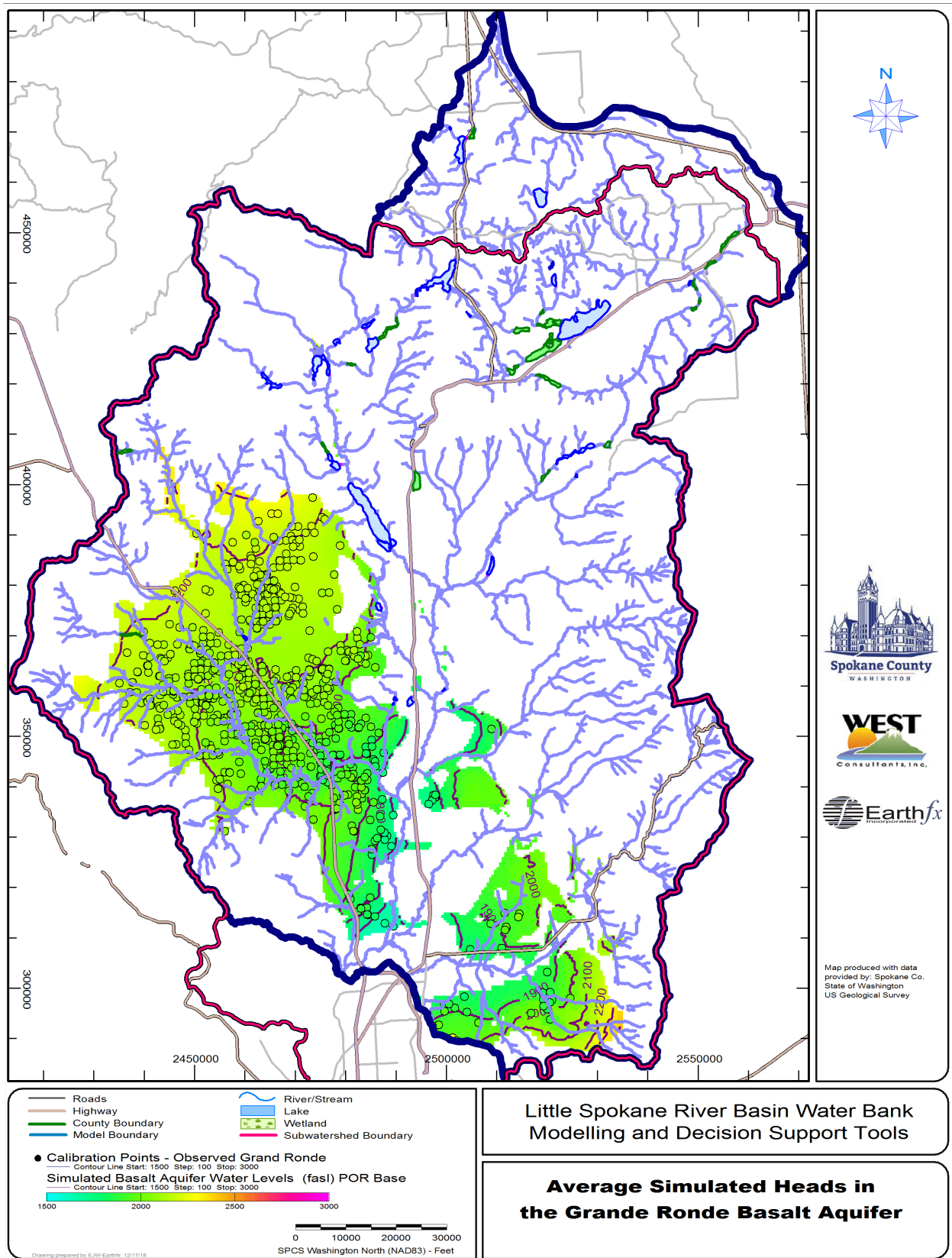


Figure 9.30: Average simulated head in the Grande Ronde Basalt aquifer (WY2003-WY2017) and observed groundwater levels.

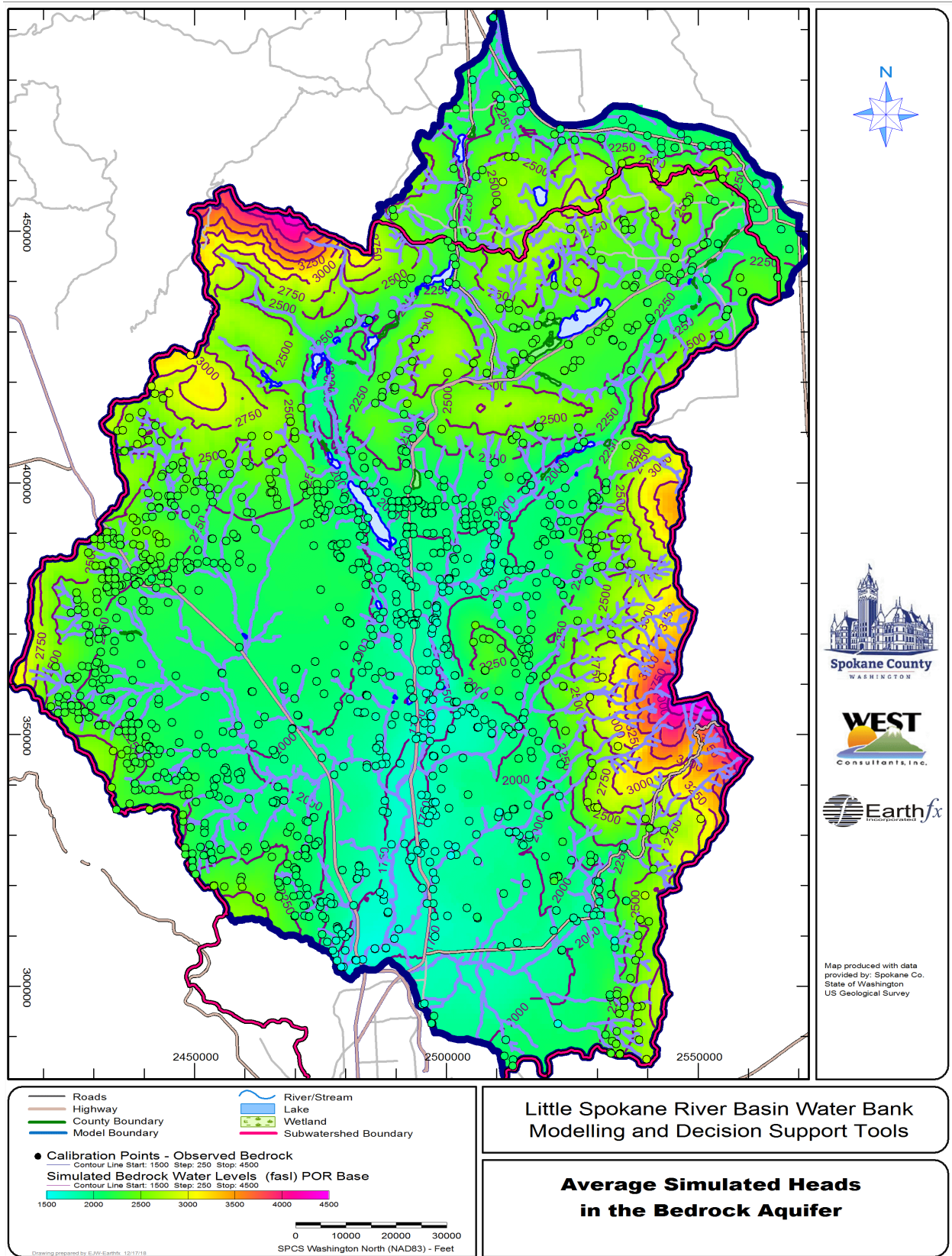


Figure 9.31: Average simulated head in the bedrock aquifer (Pre-Latah sands, weathered bedrock, and unweathered bedrock) (WY2003-WY2017) and observed groundwater levels.

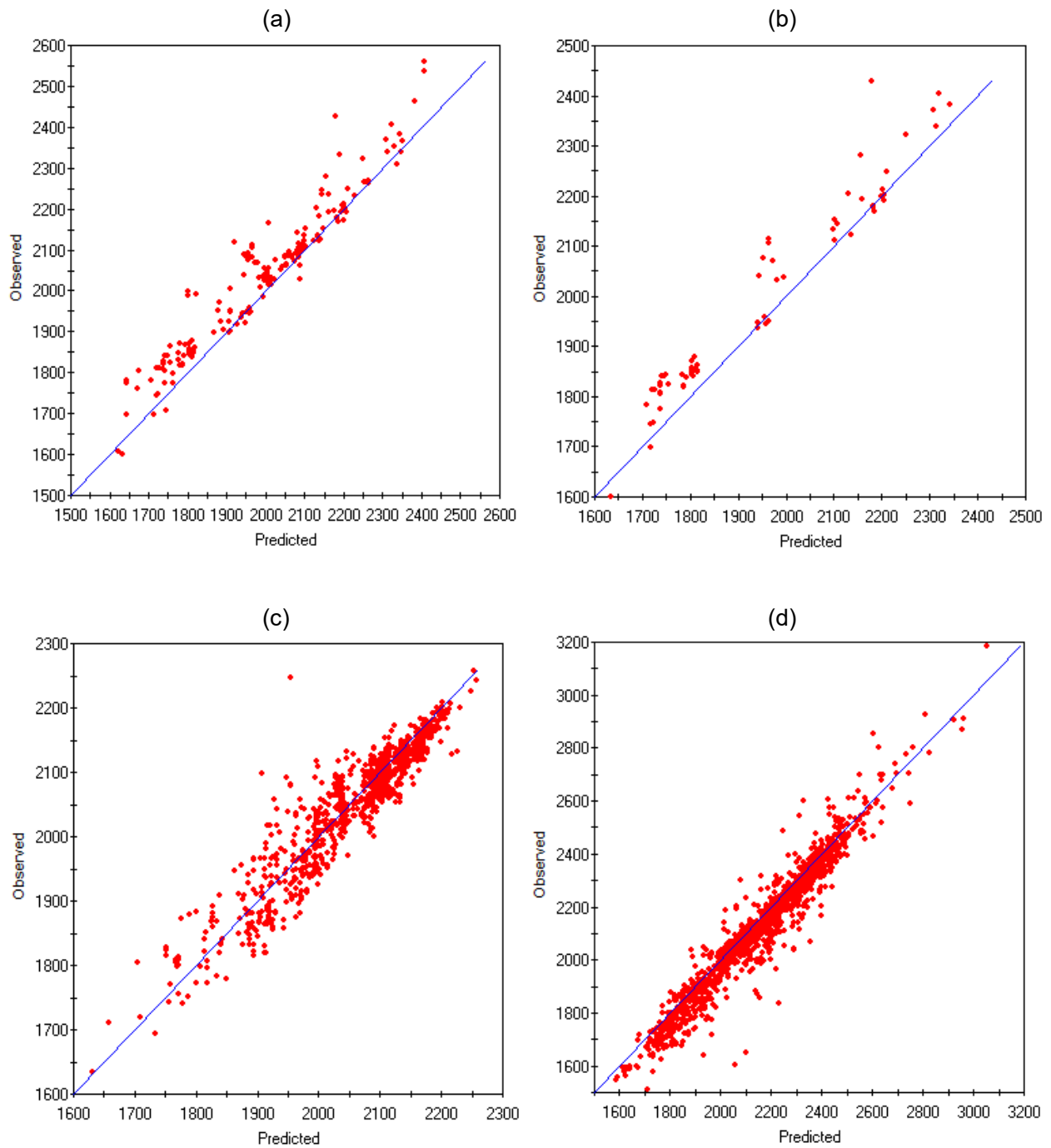


Figure 9.32: Scatterplot of residuals for the (a) Upper Aquifer; (b) Lower Aquifer; (c) Grande Ronde Basalt Aquifer; and (d) bedrock aquifer

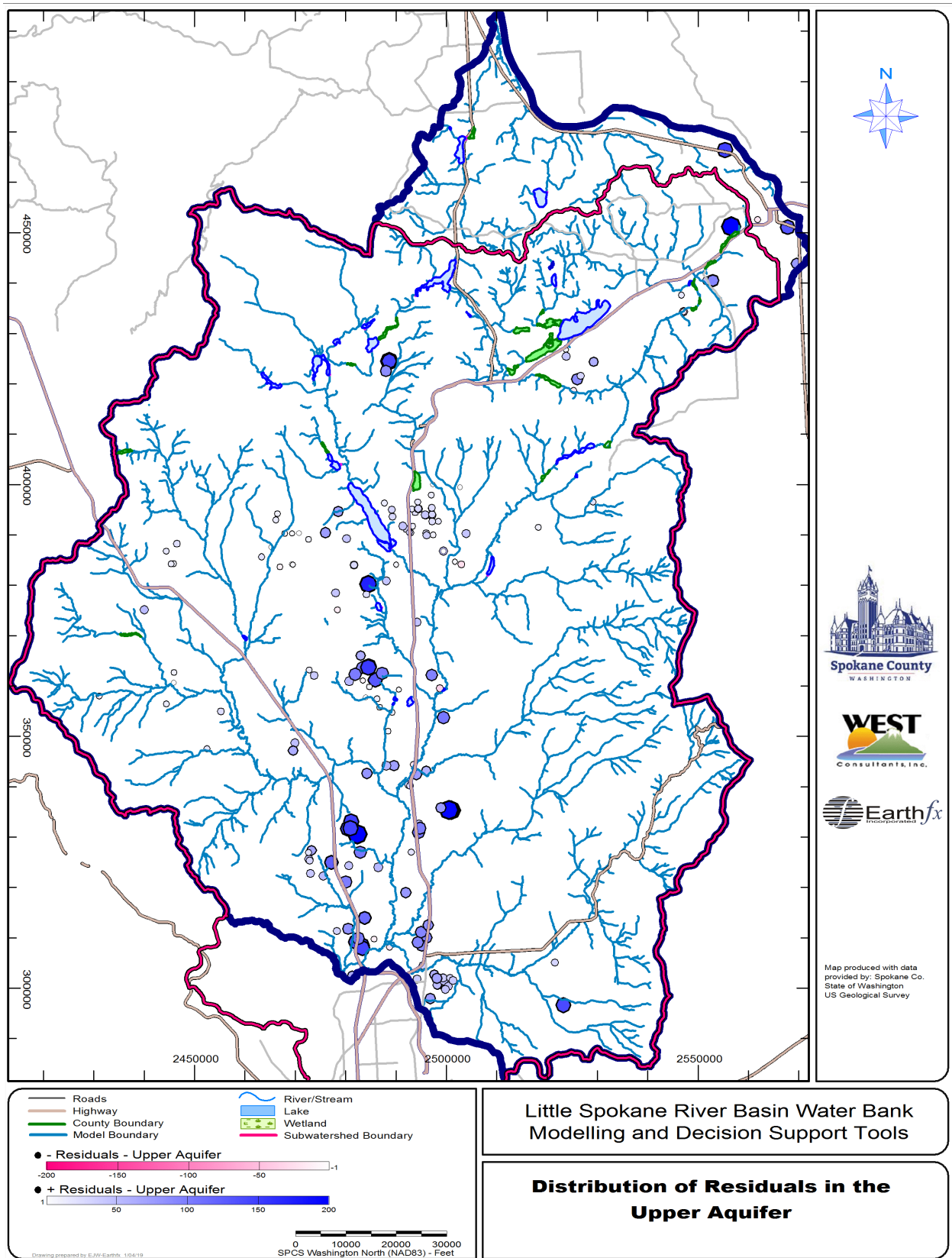


Figure 9.33: Distribution of residuals (observed - simulated) in the Upper Aquifer.



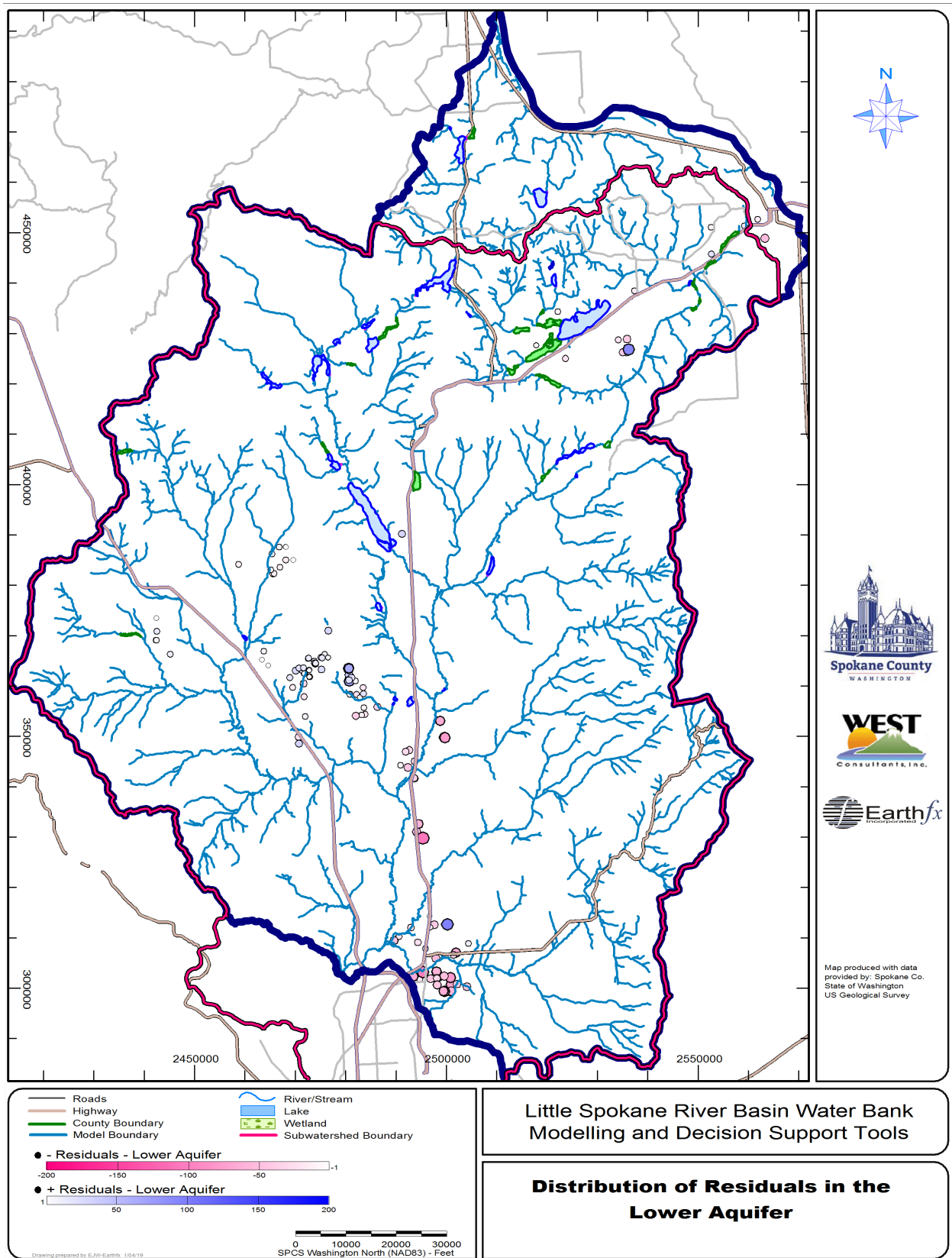


Figure 9.34: Distribution of residuals (observed - simulated) in the Lower Aquifer.