

3.3 Figures

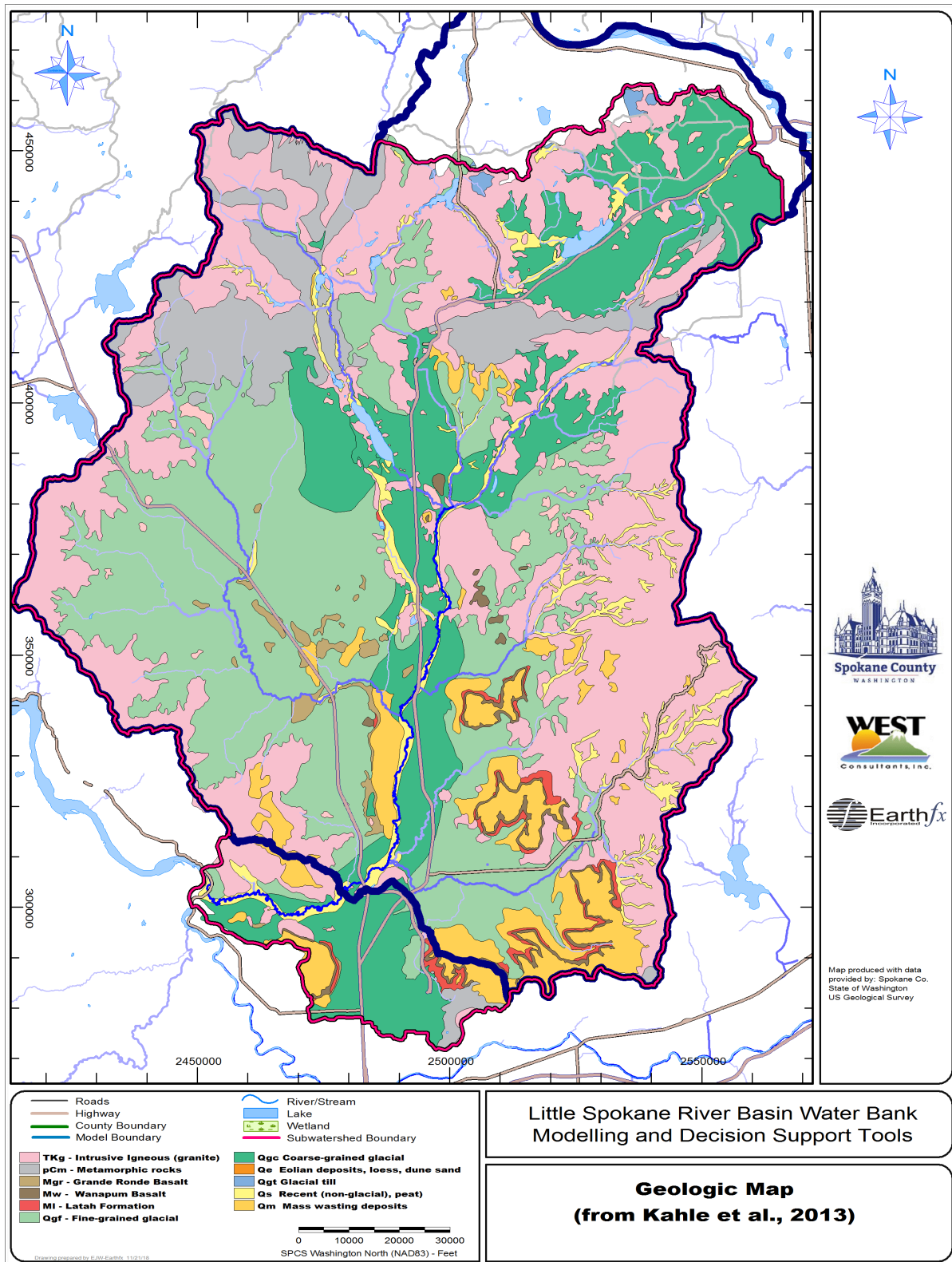


Figure 3.3: Geologic map (modified from Kahle *et al.*, 2013).

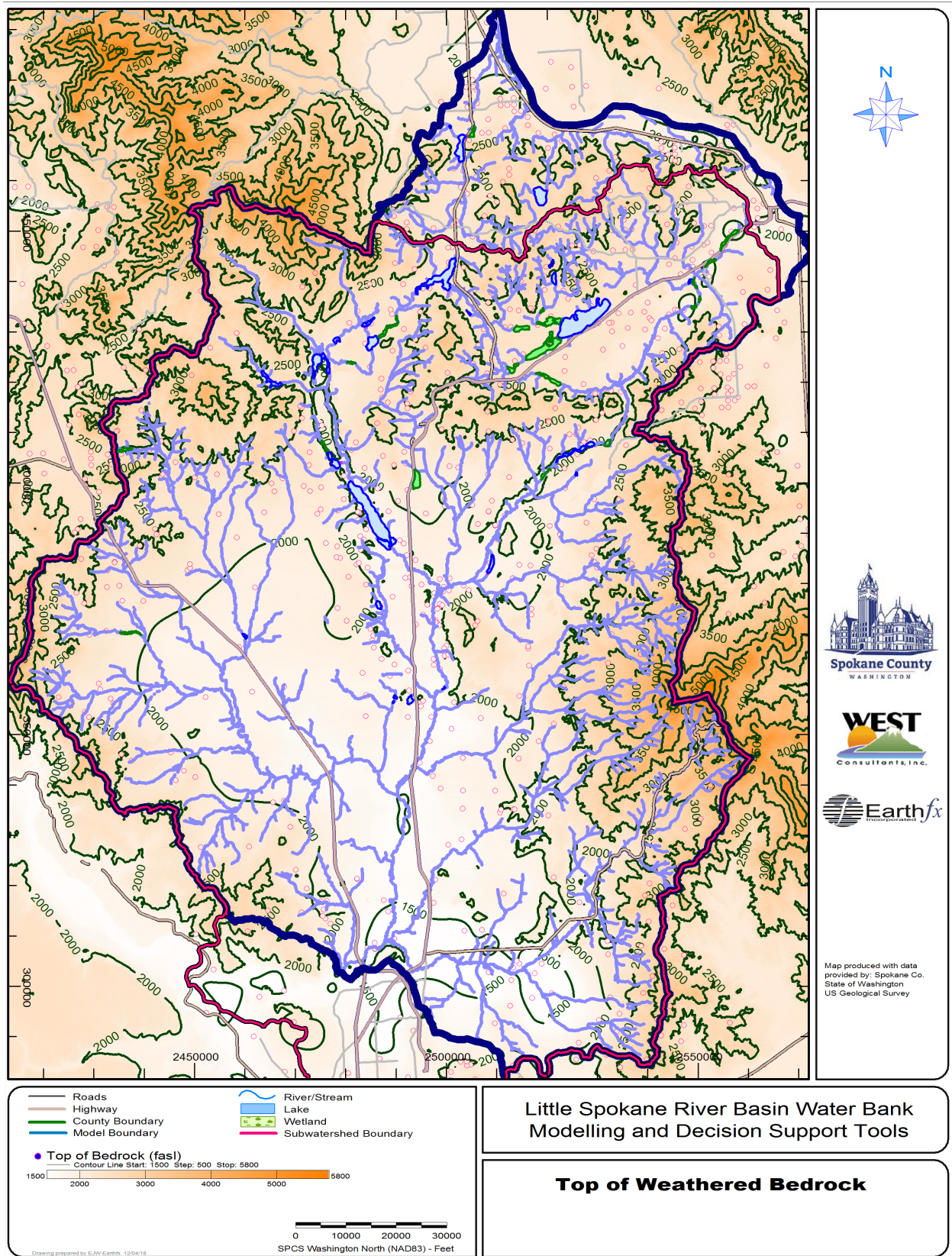


Figure 3.4: Bedrock topography, as interpolated from borehole data.

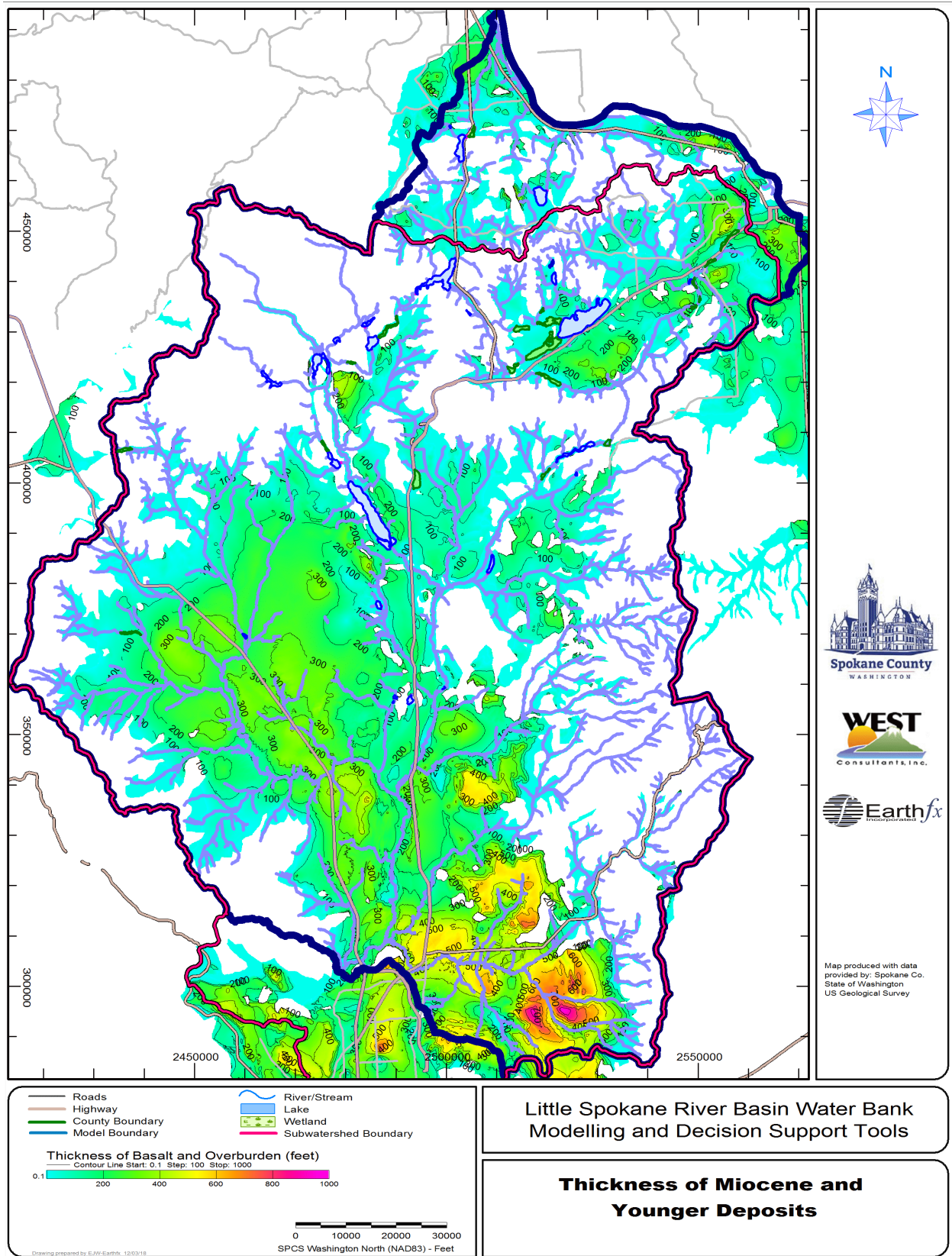


Figure 3.5: Interpreted thickness of the Miocene, Pleistocene, and Recent deposits.

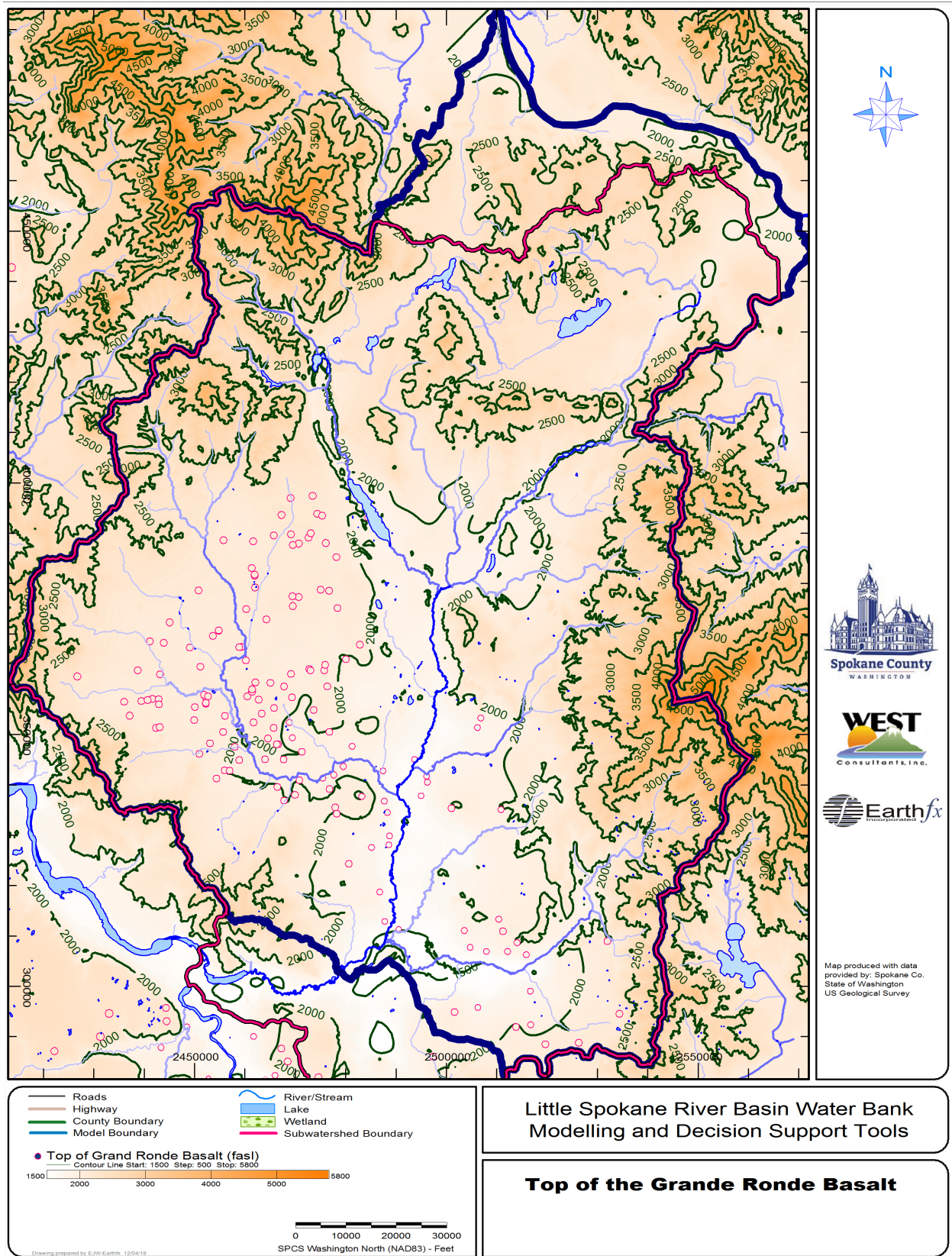


Figure 3.6: Top of the Grande Ronde Basalt.

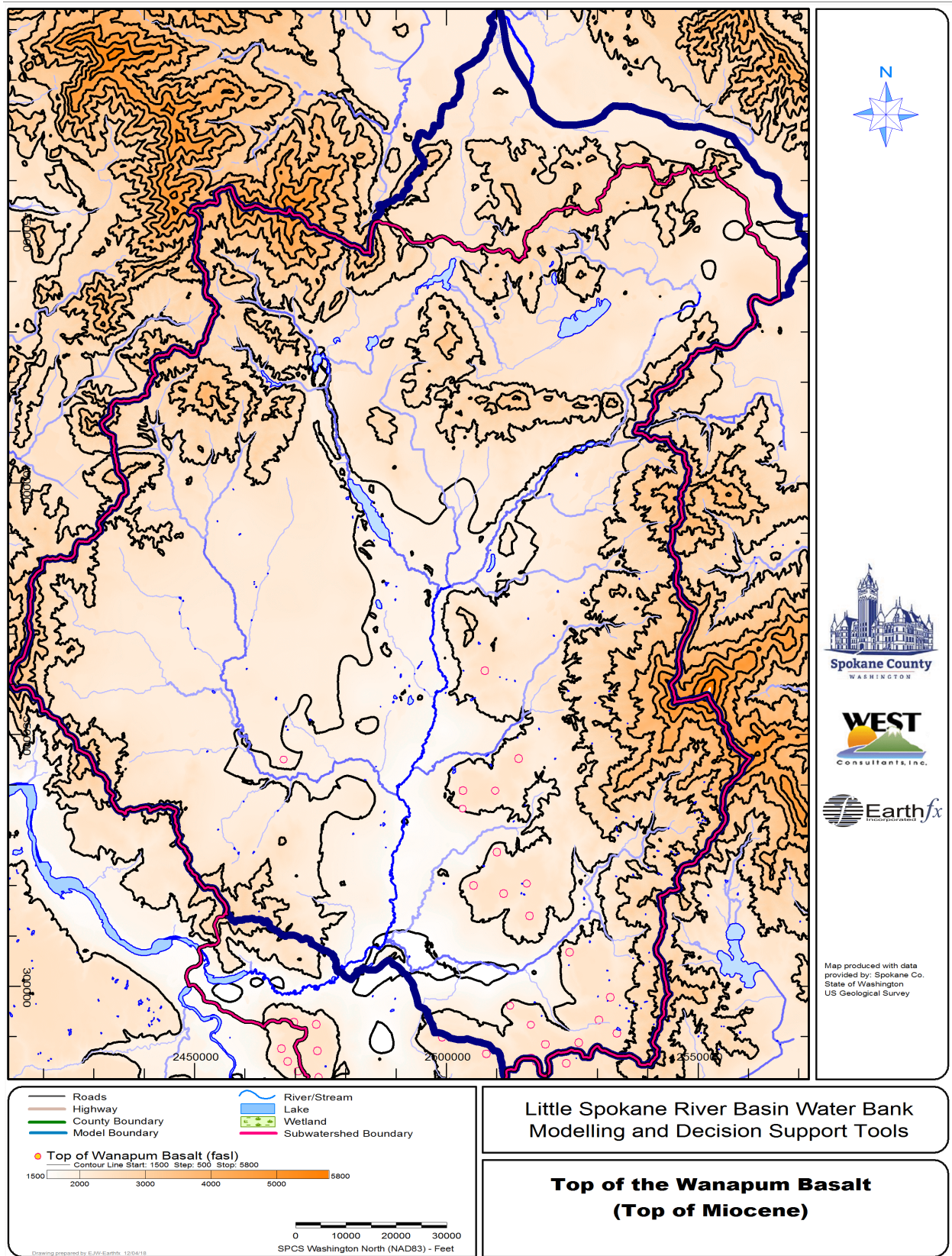


Figure 3.7: Top of the Wanapum Basalt and top of Miocene unconformity.

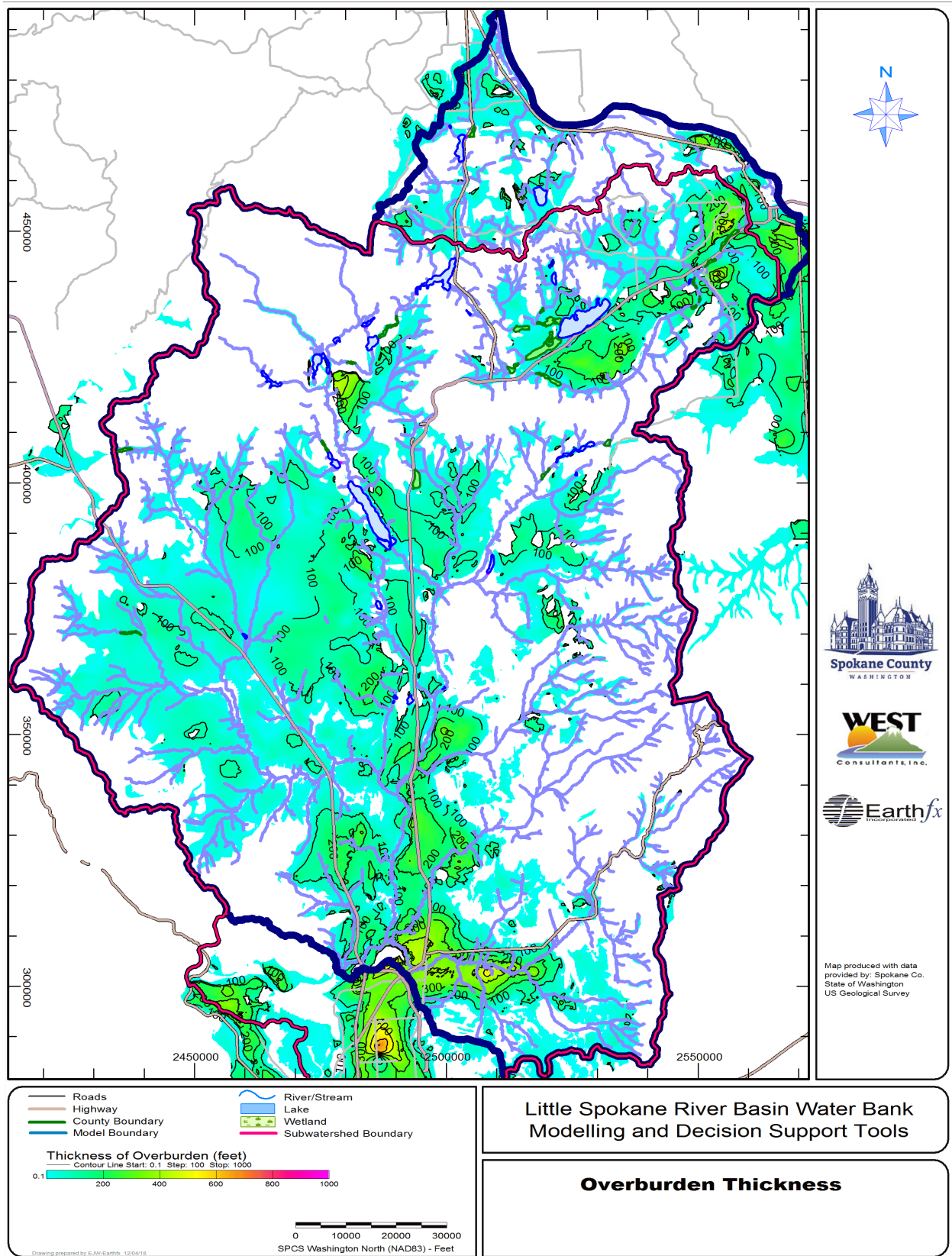


Figure 3.8: Interpreted thickness of the Pleistocene and Recent deposits.

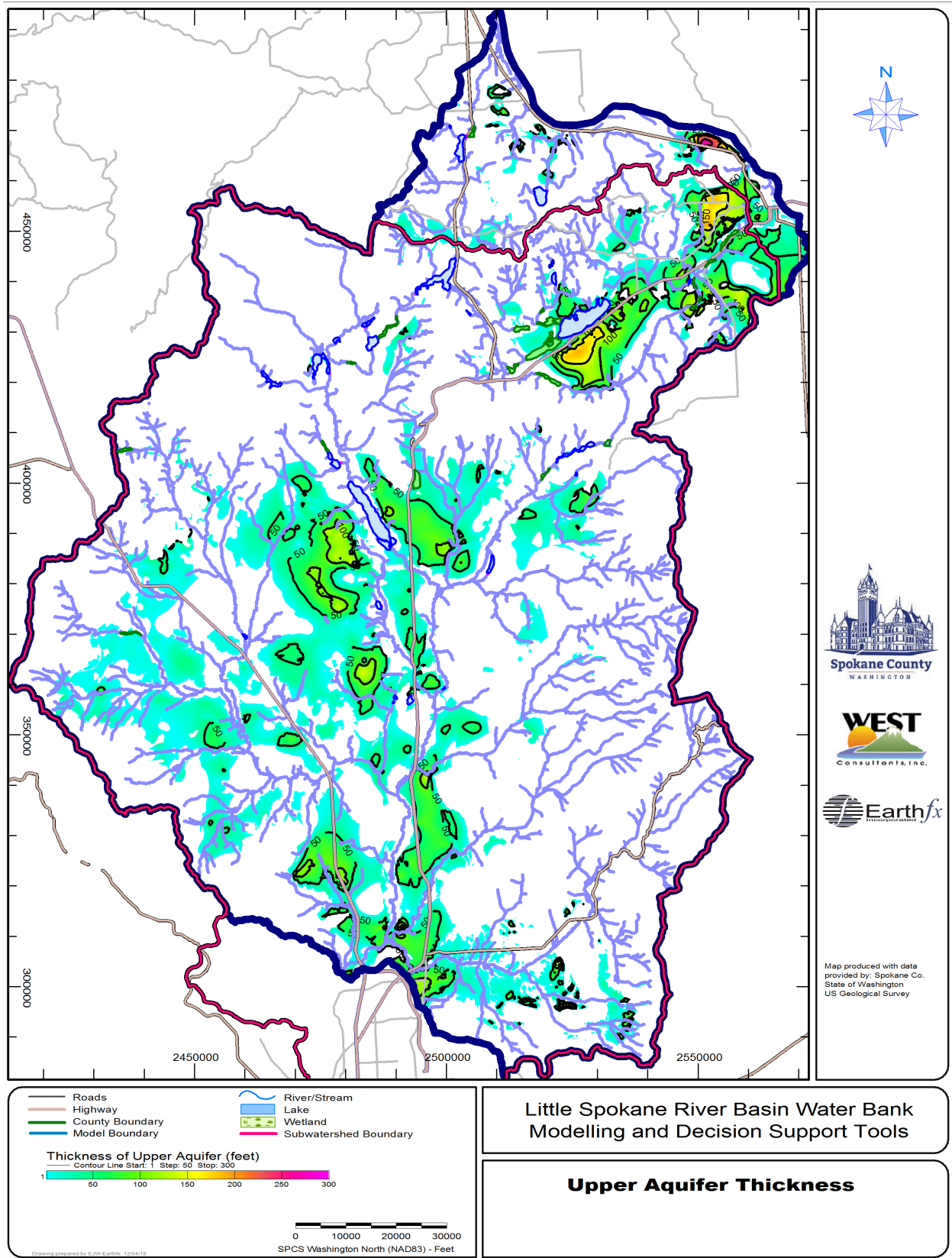


Figure 3.9: Interpreted thickness of the Upper Aquifer within the study area.

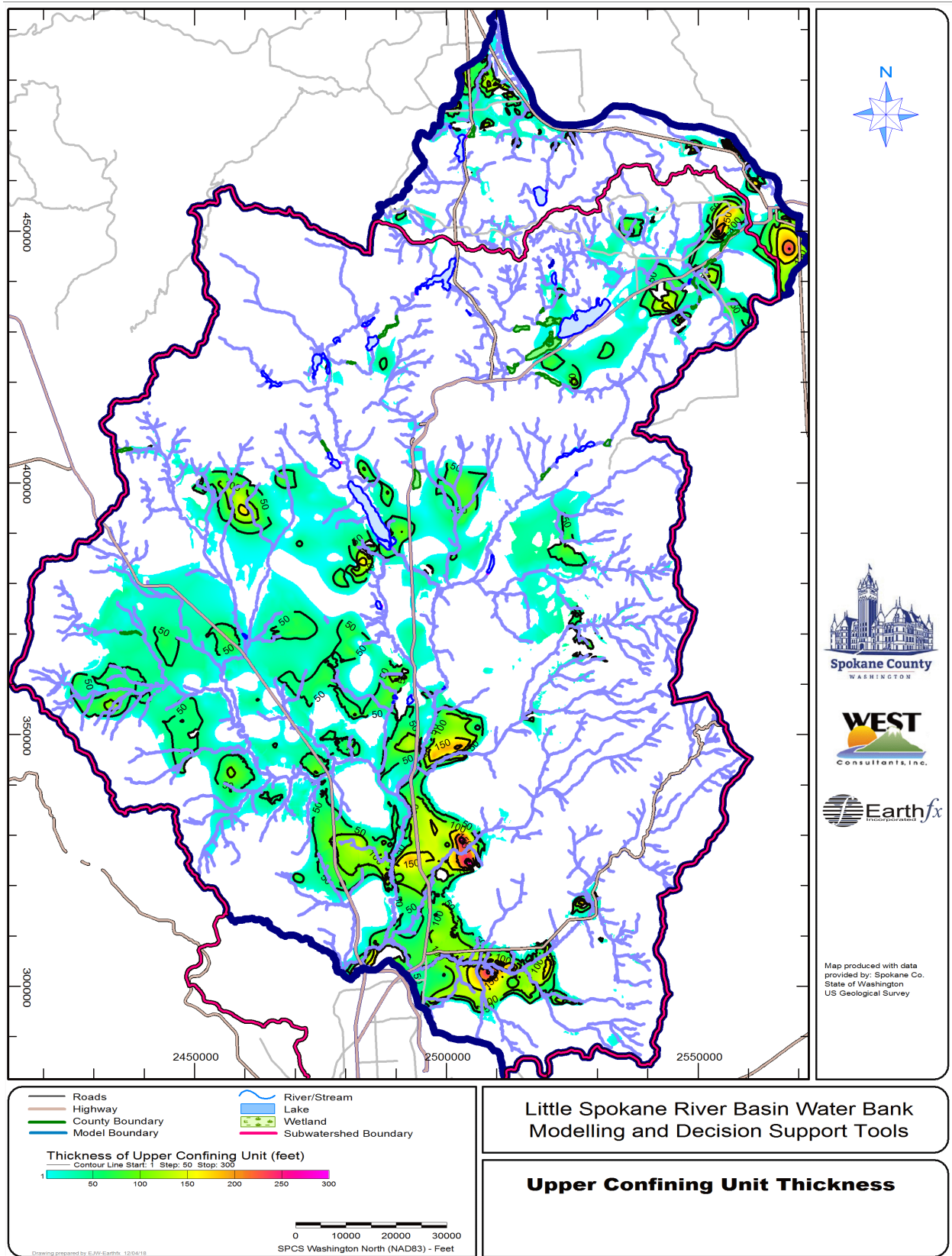


Figure 3.10: Interpreted thickness of the Upper Confining unit within the study area.

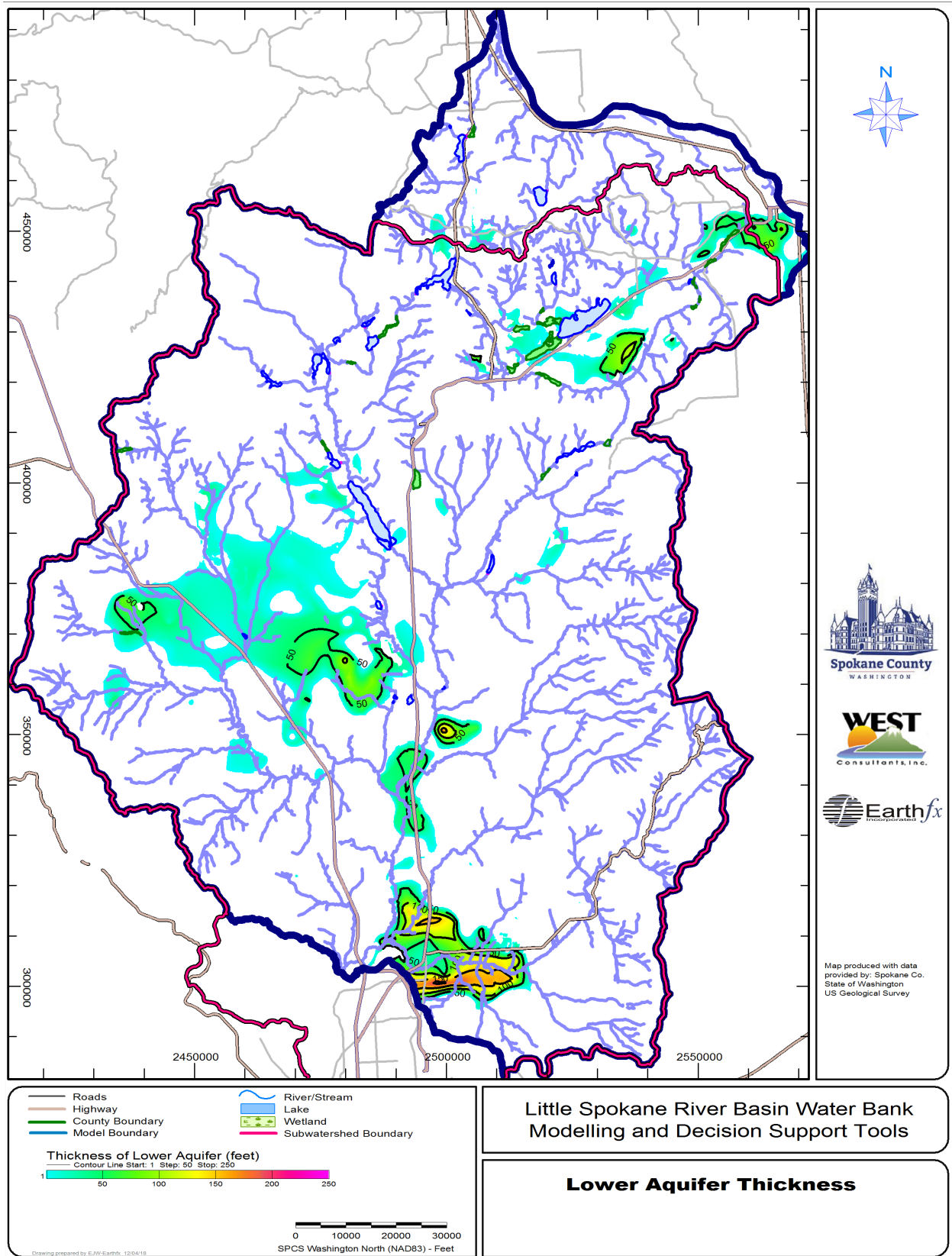


Figure 3.11: Interpreted thickness of the Lower Aquifers within the study area.