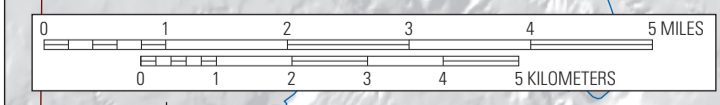


EXPLANATION	
<b>Geologic unit</b>	<b>City</b>
Qs Recent non-glacial sediment, peat	City
Qmw Mass-wasting deposits	Contact
Qe Eolian deposits, loess and dune sand	Study area boundary
Qgf Fine-grained glacial deposits	Gaging station
Qgc Coarse-grained glacial deposits	Well
Qgt Glacial till	
Mw Wanapum Basalt of the Columbia River Basalt Group	
Mgr Grande Ronde Basalt of the Columbia River Basalt Group	
MI Latah Formation	
TKg Intrusive igneous rocks, mostly granite	
pEm Metamorphic rocks; quartzite, schist, gneiss	



**Geologic map and location of project wells in the Little Spokane River Basin study area, Spokane, Stevens, and Pend Oreille Counties, Washington**

By  
Sue C. Kahle, Theresa D. Olsen, and Elisabeth T. Fasser  
2013

R.40E R.41E R.42E R.43E R.44E R.45E R.46E  
Base modified from U.S. Geological Survey data, USGS National Elevation Data (2000), 30-foot resolution DEM and other digital sources. Projection: UTM, Zone 11N, North American Datum 1983. Scale factor=0.9996. False easting = 500,000. False northing = 0.